



# Inside Ashburton

December 2020

## Reef to Range photo competition winners announced

### In This Issue

Footpath Renewal Program competition winners	2
Pilbara Regional Waste Management Facility	3
Half pipe dreams	7
Onslow Gala	9
NAIDOC Week	10



There was a stunning array of entries into this year's Reef to Range photo competition. The judges deliberated over snaps that showcased the ancient landscapes, unique wildlife and intense colours that constitute the full reef to range experience offered in the Shire of Ashburton.

Congratulations to the winners of the competition, who will share a total of \$3,600 prize money and whose brilliant pieces will form a 2021 calendar:

- Janice Gubbins with *Sunrise Mulla Mullas*, taken at Mt Bruce
- Diana Abeleda with *Colours of Karijini*, taken at Spa Pool, Karijini National Park
- Bradley Roberts with *Different Perspective*, taken at Tiger Eye

- Shawn Heiderich with *Old Growth*, taken at Old Town Jetty, Onslow
- John Mantei with *Passing Stormfront*, taken at 178km Rail Access Line
- Ally Wilson with *Oasis in the Outback*, taken at Fern Pool, Karijini National Park
- Eleanor Lukale with *Mulla Mulla Drive*, taken on the journey between Paraburdoo and Nanutarra
- Jevgenia Kolk with *Colours of Karijini - Red & Turquoise*, taken at Fern Pool, Karijini National Park
- Belinda Heiderich with *Behind the Falls*, taken at Fern Pool, Karijini National Park
- Teneka Clark with *Back Beach*, taken at Salt Jetty, Onslow and *Ta Ta Lizard*, taken at Old Onslow
- John Barnett with *Me, Myself & Joffre*, taken at Joffre Gorge

- Brendon Brown with *Dust Driving*, taken at Cheela Plains

Thank you to Liz Diver at the Tom Price Visitor Centre for organising the fabulous competition. Keep your eyes peeled on the Tom Price Visitor Centre Instagram page to find out when the calendar is hot off the press and available for purchase.

This activity met Community Goal 1 of the Strategic Community Plan, Vibrant and Active Communities.



This activity met Community Goal 3 of the Strategic Community Plan, Unique Heritage and Environment.



# Shell collection a treasure trove for Onslow

The Shire of Ashburton have recently become the caretakers of a staggering collection of local shells. The Neil and Judy Baker Shell Collection, named after the Onslow residents of who have diligently gathered the pieces over more than 60 years, contains thousands of seaside relics from Onslow and its stunning surrounding islands. Some pieces are worth several thousand dollars.

The remarkable collection was scheduled to be relocated to the Abrolhos Islands, about 80 kilometres west of Geraldton. Recognising the significance of the display, Onslow Visitor Centre and the Shire of Ashburton stepped in to keep the collection in Onslow. As one of Australia's largest private shell



collections, the compilation will be a major drawcard for tourism, encouraging travelers to explore the exceptional natural history of our area. The display will be open for viewing from early 2021.

This activity met Community Goal 3 of the Strategic Community Plan, Unique Heritage and Environment.



# Footpath Renewal Program makes accessibility a walk in the park

The Shire of Ashburton are pleased to have delivered a significant Footpath Renewal Program to the Tom Price community.

The five-week schedule of works commenced on 21 September and resulted in an additional 15 kilometres of footpath around Tom Price, including ANZAC Memorial Park, East Road - Golf Club Link, Jacaranda to Willow Road, South Road and Area W Loop through Canberra Drive.

The improved facilities have already had a positive impact on the liveability of Tom Price, allowing residents to easily access our many green public spaces, increased safety for pedestrians and enabling community members to walk where possible, which has a host of environmental and health benefits.



This activity met Community Goal 1 of the Strategic Community Plan, Vibrant and Active Communities.



This activity met Community Goal 4 of the Strategic Community Plan, Quality Services and Infrastructure.



# Onslow Foreshore protection study

The Shire of Ashburton recently undertook an in-depth foreshore protection study in Onslow, inspecting the current seawall and measures in place to stabilise and protect the coastal area and surrounds.

Shire of Ashburton President Kerry White said that similar to a number of neighbouring coastal communities, Onslow and the Shire need to prepare against the threat of rising sea levels to property, infrastructure, and the environment.

“Rising sea levels, and the effects of storm events such as ocean storm surge, flooding induced from rainfall and rising water tables, affect the speed of coastal erosion and the viability of low lying areas of Onslow”, said Councillor White.

“As part of the Shire’s continued coastal management plan, Council allocated \$900,000 this year towards Onslow’s foreshore improvement and protection, including a 120m seawall extension near the ANZAC Memorial site.

“The seawall works also include a new outfall structure at the eastern end of the seawall, a new stormwater outlet structure mid-way along the seawall, and repairs to existing stormwater tidal flaps. These works are intended to provide for more effective stormwater egress to the ocean”.

This activity met Community Goal 1 of the Strategic Community Plan, Vibrant and Active Communities.



This activity met Community Goal 2 of the Strategic Community Plan, Economic Prosperity.



This activity met Community Goal 3 of the Strategic Community Plan, Unique Heritage and Environment.



This activity met Community Goal 4 of the Strategic Community Plan, Quality Services and Infrastructure.



## Plans for Pilbara Regional Waste Management Facility impress at regional conference

Our Project Officer Mark Lee presented at the Pilbara Waste Summit on 6 November. Mark provided an update for those in attendance on the Pilbara Regional Waste Management Facility.

The facility, which will be based in Onslow, is a Class IV Site, meaning the facility is equipped to process heavy duty waste such as asbestos and demolition material. With only three Class IV facilities in Western Australia and all of them in the metro area, the Pilbara Regional Waste Management Facility presents a unique economic opportunity for our region.

Construction of the facility is well underway, with the first soil turned over in June of this year. Work is due to be completed by the end of 2020. There is the potential to expand the capacity of the facility to include recycling for tyres, steel and the like in future.



This activity met Community Goal 2 of the Strategic Community Plan, Economic Prosperity.



This activity met Community Goal 3 of the Strategic Community Plan, Unique Heritage and Environment.



# Maintenance crew commended for professional approach

A Shire of Ashburton maintenance crew has been recognised for their outstanding diligence.

A contractor, who recently trained the Onslow-based crew praised the crew as the most engaged he has ever had the pleasure of dealing with. The contractor went on to say, "If you ever want to look

at a model that epitomises teamwork and great culture – come here". He continued to add that the Shire of Ashburton maintenance crew took great pride and care of the road sweeper, and that the contractor wishes he had more customers behave the same way.

Well done to crew members Ki-Ann,

Douglas and Zayn for setting an exemplary standard. A special commendation to Mark Reid for displaying outstanding leadership.

This activity met Community Goal 5 of the Strategic Community Plan, Inspiring Governance.



## Shire of Ashburton Christmas holiday period operating hours

The Shire of Ashburton wishes to advise residents that our administration offices, depots and libraries across our region will be closed from Wednesday 23 December inclusive, reopening on Monday 4 January. There will be no domestic waste collection from Christmas Day until 31 December in Tom Price, and between Christmas Day and 1 January in both Onslow and Paraburadoo.

In the event of an emergency, contact 000 as normal. The Shire of Ashburton's after hours call centre will handle other emergencies, such as ranger services. The team at the Shire of Ashburton wish all of our community members a wonderful holiday season and a safe, happy and prosperous New Year.

This activity met Community Goal 4 of the Strategic Community Plan, Quality Services and Infrastructure.



# Containers for Change a repository of benefits

The Shire of Ashburton has enthusiastically endorsed Western Australia's state government container deposit scheme, Containers for Change. Shire President Kerry White said that Council is pleased to support the initiative.

"Containers for Change stands to benefit our Shire from an environmental, economic and community perspective," said Councillor White.

"In addition to diverting waste from landfill, reducing litter and creating employment the program provides a fundraising opportunity for local clubs and groups.

"There has been backing from the community for the scheme and it is heartening to see our residents take pride in our region through their commitment to reducing waste."

Not-for-profit organisation Ashburton Aboriginal Corporation located at 39 Boonderoo Road will be the authorised refund point for Tom Price. North West Recycling will offer a mobile refund point service, visiting Onslow Tourist Centre and Pannawonica. Residents are encouraged to register for a scheme ID through the official Containers for Change website, which allows refunds to be deposited electronically to a nominated bank account.



This activity met Community Goal 1 of the Strategic Community Plan, Vibrant and Active Communities.



This activity met Community Goal 2 of the Strategic Community Plan, Economic Prosperity.



This activity met Community Goal 3 of the Strategic Community Plan, Unique Heritage and Environment.



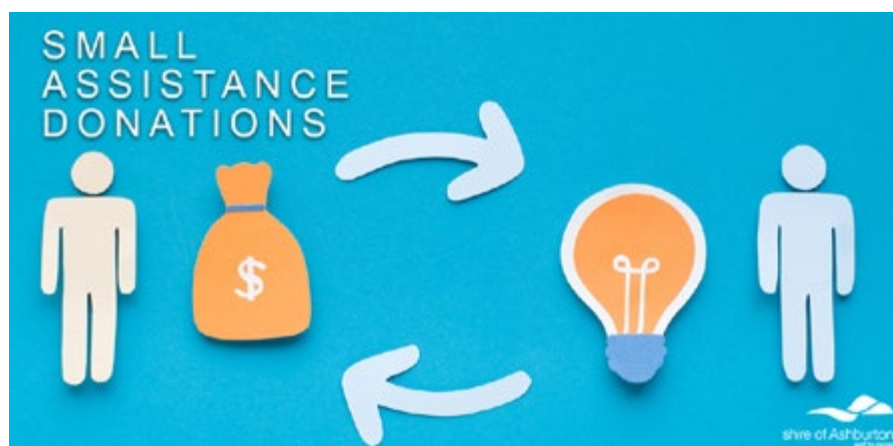
## Small Assistance Donations

The Shire of Ashburton continues to support local sporting clubs and community groups by offering Small Assistance Donations. Small Assistance Donations are for up to \$500 per financial year.

Applicants may apply more than once in a financial year for lesser amounts, up to the maximum of \$500. This includes cash and in-kind support such as venue hire. Applications can include community-based activities and programs such as

local sporting events, club participation in regional or state championships, club equipment, community development such as clinics, courses and seminars, individual sports or education scholarships, and regional, state, national or international competition participation.

We have recently streamlined the application process, making it easier for local groups who are in need. Not-for-profit organisations are eligible, as well as individuals on a base-by-case basis. For more information and to apply go to our website.



This activity met Community Goal 1 of the Strategic Community Plan, Vibrant and Active Communities.



# Residents urged to be heat safe this summer

With hot weather rapidly approaching, Shire of Ashburton community members and visitors to our region are reminded to treat the intensity of the Pilbara summer with the respect it's due.

Always carry water with you, on person or in your vehicle, even if you plan your trip to be a short one. Notify someone of your

travel plans and the time that you intend to return. Unforeseen circumstances can occur that might mean you are outdoors and exposed to the heat for longer than anticipated.

With temperatures regularly exceeding 40 degrees Celsius in the peak of summer, it doesn't take long to become dehydrated. Keep your fluids up by sipping water

at regular intervals throughout the day. Reduce your sun exposure by wearing long, loose light coloured clothing and a hat to reflect the heat and keep cool. Keep physical activity to a minimum during the hottest part of the day and seek shade where possible. By being sensible you can reduce the strain on our local emergency service teams.



## Snakes season slithers in

As the weather warms up snakes will start to make an appearance. The Pilbara is home to snakes that can be deadly, including the aptly named Desert Death Adder.

Remain vigilant and be mindful of snakes at all times, even at night. Keep your property well maintained and clutter-free to dissuade snakes from building nests near your home. By doing your part to prevent snake habitats in residential areas you can reduce the risk of harm befalling others.



# Half pipe dreams a reality following Tom Price Skate Park consultation

Tom Price youth actively engaged in the Tom Price Skate Park consultation held on 30 October. The session, hosted by WA-based company Skate Sculpture, sourced input from the Tom Price community to shape planned upgrades.

Kids workshopped features they wanted in the new design, and there was plenty of lively discussion as designs were sketched on paper. The addition of a skate bowl was a universal aspiration. A concept design has been drafted based on the feedback from the consultation and will be presented at the December Ordinary Meeting of Council. Once the budget for the upgrades has been adopted, the design will go back to the community once again for additional feedback before a final design is settled on. Stay tuned on our Facebook page to keep tabs on when the next community consultation session will be held.



This activity met Community Goal 1 of the Strategic Community Plan, Vibrant and Active Communities.



This activity met Community Goal 4 of the Strategic Community Plan, Quality Services and Infrastructure.





★ **FIGHT** *the* **BITE** ★

**75% OF PEOPLE**  
**ARE BITTEN AROUND THEIR OWN HOME**  
**PREVENT MOSQUITO-BORNE DISEASE**

★ **COVER UP. REPEL. CLEAN UP.** ★

[www.healthywa.wa.gov.au](http://www.healthywa.wa.gov.au) / **FIGHTTHEBITE**

 Government of Western Australia  
Department of Health



# Cyclone Alert System

**PREPARE,  
TAKE ACTION,  
RECOVER**

## KEEP INFORMED, STAY SAFE

When a cyclone threatens, community alerts will be issued by the Department of Fire and Emergency Services. The alert level changes to reflect the increasing risk to your life and advises what you need to do before, during and after a cyclone. The four alert stages are – blue, yellow, red and all clear.

### COMMUNITY ALERT LEVELS

<b>BLUE ALERT</b>	Get ready for a cyclone	You need to start preparing for cyclonic weather.
<b>YELLOW ALERT</b>	Take action and get ready to shelter from a cyclone	You need to prepare for the arrival of a cyclone.
<b>RED ALERT</b>	Take shelter from the cyclone	You need to go shelter immediately.
<b>ALL CLEAR</b>	The cyclone danger has passed but take care	Wind and storm surge dangers have passed but you need to take care to avoid the dangers caused by damage.

**DO NOT DRIVE ON RED ALERT – IT IS DANGEROUS**

Cyclones can be unpredictable and can intensify rapidly. You need to prepare for a cyclone impact even if it does not look like it is coming your way.

### You and your family must know

- The four stages of the alert system and what they mean
- Where to access the latest alert level information
- What tasks or actions need to be done on each alert level



### During a cyclone you can get alert information from

- Emergency Alerts at [www.dfes.wa.gov.au](http://www.dfes.wa.gov.au)
- DFES Information Line on **13 DFES** (13 3337)
- [www.bom.gov.au](http://www.bom.gov.au) or by calling the Cyclone Warning Advice Line on **1300 659 210**
- ABC radio and other local media

**LISTEN CAREFULLY**  
and do what the alerts say to help keep safe.

For more information visit [www.dfes.wa.gov.au](http://www.dfes.wa.gov.au) or contact **DFES Community Engagement 9395 9816**



Government of **Western Australia**  
Department of **Fire & Emergency Services**





# Onslow Gala 2020 Casino Royale

An evening of glitz and glamour was enjoyed at the annual Onslow Gala, held on Saturday 17 October.

With croupiers, roulette and blackjack, the theme of 'Casino Royale' was well encompassed. Guests delighted in delicious canapes, champagne, live music and delightful company.

A warm thank you to Sheree Tamsett for coordinating the event, and to Chevron-operated Wheatstone Project for your ongoing support in making this year's Gala a roaring success.



This activity met Community Goal 1 of the Strategic Community Plan, Vibrant and Active Communities.



# NAIDOC Week celebrated across the Shire of Ashburton



There was a full schedule of events across our communities in commemoration of NAIDOC Week 2020. Originally planned to take place in the middle of the year, physical events were postponed in a bid to protect our residents from COVID-19, particularly our valued Elders. There was a terrific turnout in Pannawonica, supported by Rio Tinto encouraging employees to attend by arranging buses from mine sites. Corey Colum provided easy-listening live music, with Sodexo covering the complimentary catering. Patrons enjoyed the grub, with many returning for seconds!

After performing the official Welcome to Country, Ms Tuesday Lockyer spoke of the link between her family to the land around town, and how generations past travelled and lived on the land. James Kelly spoke after Ms Lockyer. The three flags were then raised and the Pannawonica Primary School Choir performed 'We Are Australian'. A fabulous dinner was enjoyed

by all and the evening was rounded out by a screening of the film *Bran Nue Dae*.

The Tom Price event was a success, with a couple hundred people in attendance. Face painting provided by the wonderfully creative Zara Parker had a significant queue of both kids and adults! Youngsters engaged in craft activities offered by IBN and Art Hub with gusto, whipping up rain-makers and badges. Red Dirt Reptiles were a hit, with RDR representatives Dan and Aiden allowing revellers who were game the opportunity to handle snakes. The Youth Centre were terrific hosts, supporting all aspects of the day and taking plenty of photos. Rio Tinto offered native plants in take home pots, and their staff cooked the well-received barbeque. The Shire supported free pool entry to those who attended the event, which was hugely popular.

The celebrations in Onslow were consistently well-attended, and showed deference and consideration to our elders with seated yoga and an enthralling cultural

experience at Peedamulla Campgrounds. A community footy match at Thalanyji Oval was a wonderfully relaxed way of winding down the schedule of special events. Melissa Smith, Community Engagement Manager of Chevron, praised the Shire for playing a central role in bringing the community together for the occasion.

Paraburdoo hosted a jam-packed itinerary, with official opening and closing ceremonies, community barbeques, and kids' basketball matches.

Our 2020 NAIDOC Week events required a great amount of collaboration. A very warm thank you to all involved.

This activity met Community Goal 1 of the Strategic Community Plan, Vibrant and Active Communities.



This activity met Community Goal 3 of the Strategic Community Plan, Unique Heritage and Environment.



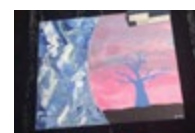
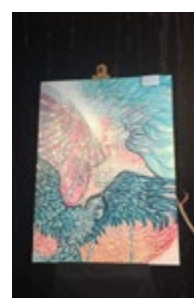
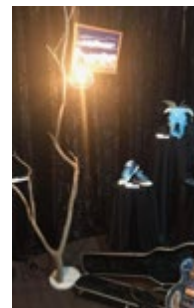
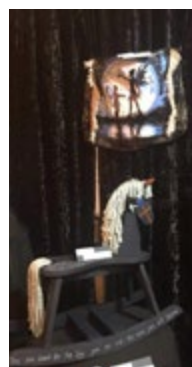
# BLUE: an interpretive art exhibition

BLUE: an interpretive art exhibition in support of Mental Health Week was held at the Pannawonica Sporting Club. Community members were asked to submit or donate a piece of art that reflected their interpretation of the word “blue”. All mediums were encouraged, including photography, painting, sculpture, wearable and edible art.

Congratulations to Craig Walker who was awarded the People’s Choice Award with *Wash away your blues away*, which was inspired by Craig’s expertise and background in plumbing. The artwork, based around an outdoor shower, reflected Craig’s thoughts on what makes us feel human after a long day in the Pilbara soaring heat – a humble shower to rinse the red dirt away.

Art pieces were up for auction, with funds raised donated towards the upcoming Pannawonica Men’s Shed. Attendees engaged in a range of themed activities, including coloured hair games, sensational blue burgers, deserts and drinks and live entertainment thanks to Steve Robins,

Karleigh Hall and Dan Hall. Papa Smurf even paid a visit! Dayle Sommers and Andie Gill did a phenomenal job of performing both master of ceremonies and auctioneering roles. Dayle and Mick McGrath are recognised for their courage in sharing their own experiences. A warm thank you to all involved in presenting this collaborative community event including Pannawonica Sporting Club, Pannawonica Craft Club, Pannawonica Men’s Shed, Pannawonica Gala Committee, Calibre, Rio Tinto and the Shire of Ashburton.



This activity met Community Goal 1 of the Strategic Community Plan, Vibrant and Active Communities.



## Graduation congratulations for Larissa

In October of this year, Pannawonica Primary School celebrated the graduation of their first Year 12 student, Larissa Unsworth. Parents, teachers and community members all came together to form a Gala Committee to organise the school’s first graduation event in recognition of Pannawonica Primary School students. The evening was held at the Pannawonica Sports Club which was decorated with the theme of ‘Hollywood Glitz and Glamour’.

Larissa, who has been at Pannawonica Primary School since 2011, invited her family, teaching staff and special guests to witness her receiving her hard-earned Graduation Certificate. Pannawonica Primary School Principal Ben Jamieson proudly recalled the schooling journey of Larissa, culminating in a successful final



year. A warm thank you to all involved who made the evening memorable. Pannawonica Primary School looks forward to the commemoration becoming an annual event.



This activity met Community Goal 1 of the Strategic Community Plan, Vibrant and Active Communities.



# Upcoming Events



## December 2020

Date	Event	Location
<b>DECEMBER 2020</b>		
18-24 December	VacSwim - Country Early Start	Country
29 December – 8 January	VacSwim - January Program 1	Metropolitan and Country
<b>JANUARY 2021</b>		
4 January	Shire of Ashburton administration offices reopen	Pannawonica, Paraburdoo, Tom Price, Onslow
4 – 8 January	VacSwim - January 5 day	Metropolitan and Country
11 – 22 January	VacSwim - January Program 2	Metropolitan and Country
18 – 29 January	School holiday program	Pannawonica
18 – 23 January	School holiday program	Onslow
25 – 29 January	School holiday program	Paraburdoo, Tom Price
26 January	Australia Day celebrations	Pannawonica, Paraburdoo, Tom Price, Onslow
<b>FEBRUARY 2021</b>		
20 February	South 32 - Virtual Rottnest Channel Swim	Paraburdoo, Tom Price, Onslow

## Administration Centre

Poinciana Street, Tom Price WA 6751  
PO Box 567

Phone: (08) 9188 4444  
Freecall: 1800 679 232  
Fax: (08) 9189 2252  
Freecall Fax: 1800 655 086

Email: [soa@ashburton.wa.gov.au](mailto:soa@ashburton.wa.gov.au)

[www.ashburton.wa.gov.au](http://www.ashburton.wa.gov.au)

### Inside Ashburton Publication is produced by the Shire of Ashburton.

**Editor:** Alison Lennon

**Editorial contributors:** Shire of Ashburton Staff

**Photo contributors:** Shire of Ashburton

**Template Design:** Design Collision

**Issue Design & Printing:** Advance Press

If you have a story for the next "Inside Ashburton" contact [media@ashburton.wa.gov.au](mailto:media@ashburton.wa.gov.au)

Find us on Facebook: [facebook.com/shireofashburton](https://facebook.com/shireofashburton)

DISCLAIMER: This newsletter is for general information purposes only. The views expressed in this newsletter are not necessarily those of the Shire of Ashburton. The Shire has taken all measures to ensure the contents in this publication is correct, however it accepts no responsibility for the accuracy or the completeness of the material. Readers are advised not to rely solely on this information when making any decision. The Shire of Ashburton reserves the right to change the publication as it sees fit. The Shire of Ashburton disclaims any responsibility or duty of care towards any person for loss or damage suffered as a result of this newsletter.

COPYRIGHT: The contents of this newsletter are subject to copyright under the laws of Australia. The copyright in materials in this newsletter as a whole is owned by the Shire of Ashburton. Third parties may own the copyright in some materials incorporated into this newsletter. In reference to the Copyright Act 1968, please feel free to reproduce parts of this newsletter for personal, educational or any other non-commercial purposes, provided that the Shire is aware of this.