

Ordinary Meeting of Council

Tom Price



PUBLIC ATTACHMENTS Part 4

23 April 2018

Clem Thompson Sports
Pavilion
Stadium Road
Tom Price
1.00 pm



The Shire of Ashburton 10 year Strategic Community Plan (2017-2027) provides focus, direction and represents the hopes and aspirations of the Shire.

Our Vision

We will embrace our unique Pilbara environment and lifestyle through the development of vibrant, connected and active communities that have access to quality services, exceptional amenities and economic vitality.

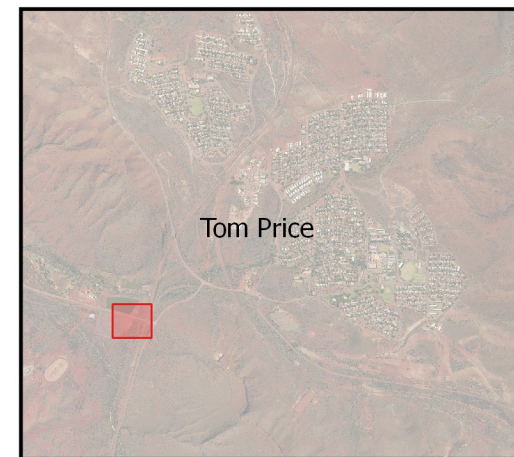
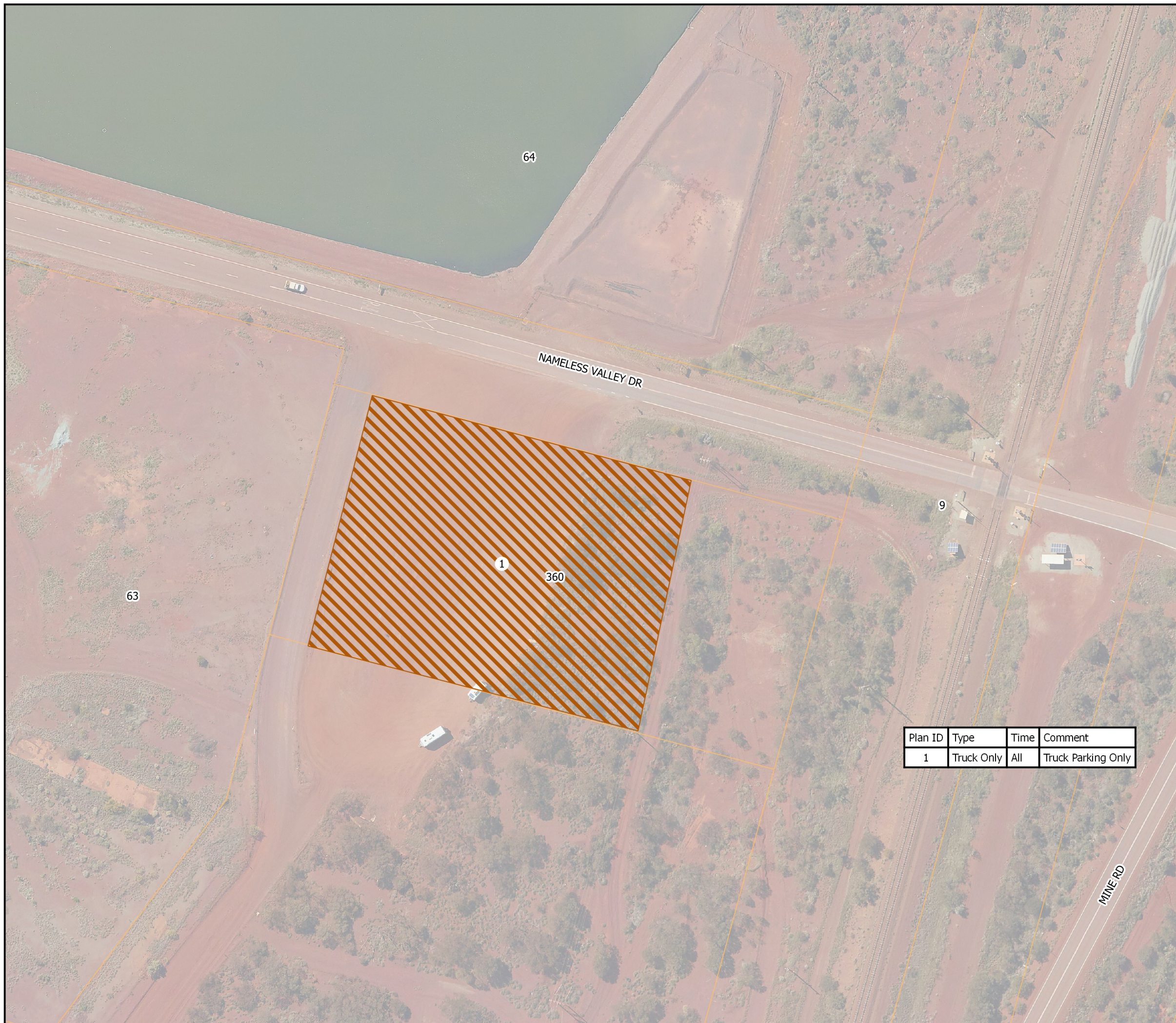


STRATEGIC DIRECTIONS

1. Vibrant and Active Communities
2. Economic Prosperity
3. Unique Heritage and Environment
4. Quality Services and Infrastructure
5. Inspiring Governance



The Shire of Ashburton respectfully acknowledges the traditional custodians of this land.



Overview



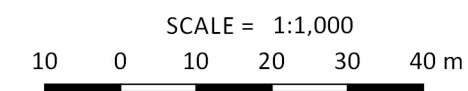
Legend

Parking Zones

-  Bus Only
-  Disabled Bay
-  Taxi Bay
-  Time Limited Parking
-  No Stopping
-  Truck Only

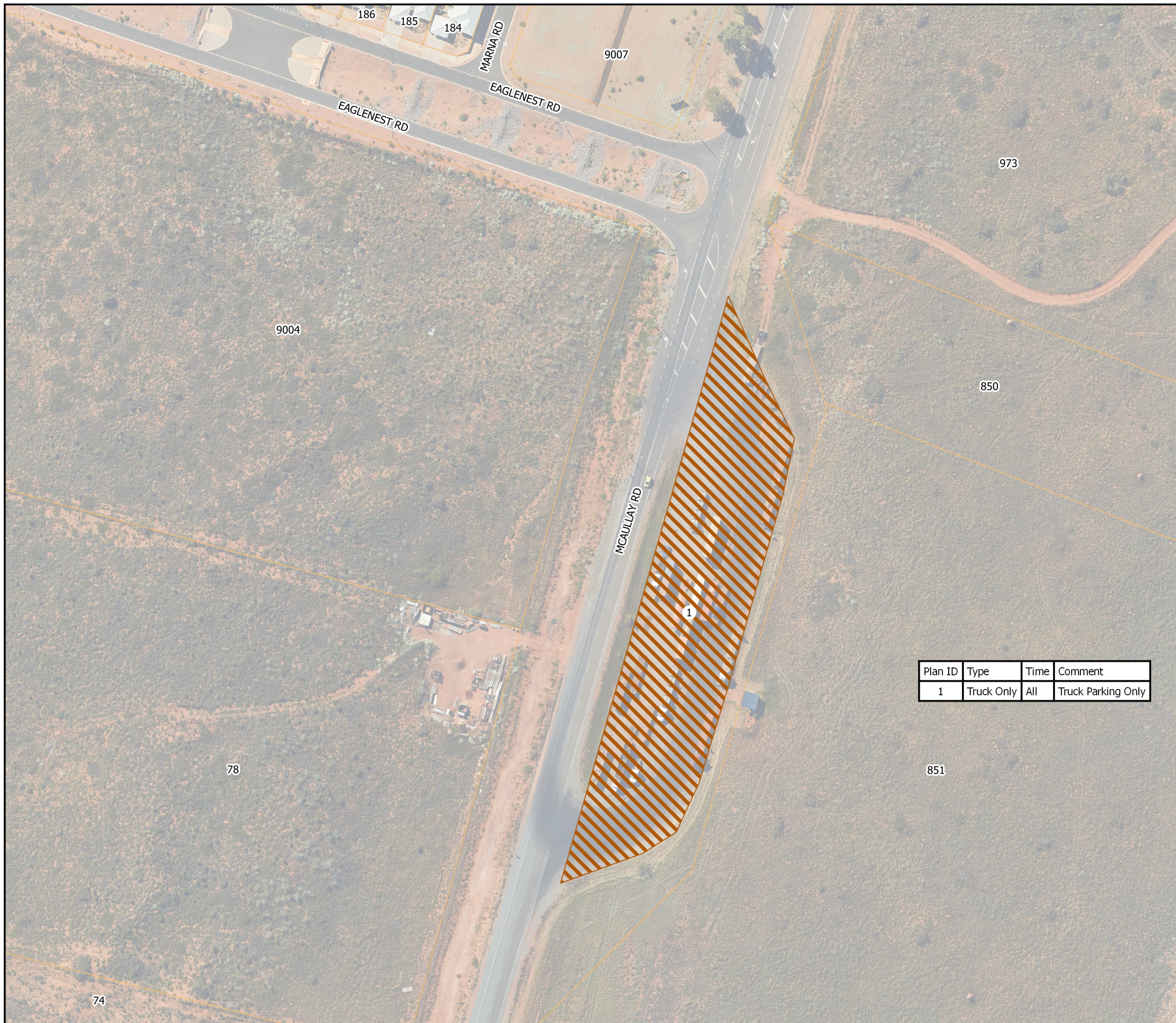
Plan ID	Type	Time	Comment
1	Truck Only	All	Truck Parking Only

**Nameless Valley Road
Truck Parking Controls
Tom Price**



Datum: GDA 94 Map Grid Australia Zone 50

This plan has been produced by the Shire of Ashburton GIS team. Although care has been taken in the compilation of this plan no responsibility is taken for any errors or omissions.



Plan ID	Type	Time	Comment
1	Truck Only	All	Truck Parking Only



Overview



Legend

Parking Zones

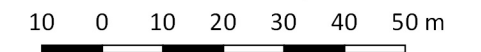
-  Bus Only
-  Disabled Bay
-  Taxi Bay
-  Time Limited Parking
-  No Stopping
-  Truck Only

**McAullay Road Truck Parking Controls
Onslow**



shire of Ashburton
reef to range

SCALE = 1:1,250



Datum: GDA 94 Map Grid Australia Zone 50

This plan has been produced by the Shire of Ashburton GIS team. Although care has been taken in the compilation of this plan no responsibility is taken for any errors or omissions.



File Ref: 12.38

Rob Paul
Chief Executive Officer
Shire of Ashburton
PO Box 567
TOM PRICE, WA 6751

8 March 2018

Dear Rob,

RE: MOUNT AUGSTUS TO PARABURDOO ROAD PROJECT

Request for Support and Future Involvement

The Shire of Upper Gascoyne sincerely thanks the Shire of Ashburton and its Councillors for meeting on the 13th February 2018 regarding the Mount Augustus to Paraburdoo Road Project. Following this meeting at the February ordinary meeting of Council the Shire of Upper Gascoyne Council made the following resolution:

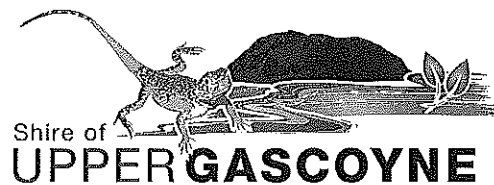
“the Shire of Upper Gascoyne formally requests support and future involvement from the Shire of Ashburton in the Mount Augustus to Paraburdoo Road Project”.

The Mount Augustus to Paraburdoo Road Project (Project) is a project that the Shire of Upper Gascoyne commenced in 2016 when it received a grant of \$300,000 from Royalties for Regions to undertake preliminary works for the proposed road between Mount Augustus National Park and Paraburdoo.

Following the acceptance of the grant, the Shire of Upper Gascoyne Council appointed Talis Consultants Pty Ltd to progress the development of the Project, starting with an initial concept design of the alignment using available aerial and spatial data. This work highlighted risks that could threaten the viability of the Project associated with road geometry on some sections south of Ashburton Downs to Meekatharra Road and with the Shire of Upper Gascoyne. As a consequence, the decision was made to focus initial investigations on the southern section of the road to prove its viability prior to investigating the northern section and commencing stakeholder consultation.

To date, preliminary horizontal and vertical designs have been completed of the southern section and selective on-site inspections made to confirm the engineering feasibility of this section of the alignment. Attention is now focusing on the section north of Ashburton Downs to Meekatharra Road within the Shire of Ashburton.

Key issues to be addressed within the Shire of Ashburton section include locating major creek and river crossings, potential impacts on pastoral infrastructure and operations as well as access through the Rio Tinto mine tenements at Paraburdoo. These tasks will involve consultation with key project stakeholders.



To be shovel ready, the engineering feasibility needs to be completed and the detailed engineering design and costings finalised. Additionally, heritage, environmental and land access approvals as well as ongoing stakeholder engagement will be required.

A comprehensive consultation strategy is now being developed which targets stakeholders, including:

- Pastoralists;
- Rio Tinto;
- Traditional land owners; and
- Main Roads Western Australia.

The draft strategy will be forwarded to you for review and comment.

The Shire of Upper Gascoyne now requests support and future involvement from the Shire of Ashburton to enable its representatives to participate in future stakeholder consultation and other aspects of the Project. A partnership between the Shire of Upper Gascoyne and the Shire of Ashburton is essential for the success of the Project, particularly in obtaining project funding from the State and Federal governments.

We look forward to working with yourselves on this Project. In the meantime, please feel free to contact either myself or John King, john.king@talisconsultants.com.au, for more information about this Project.

Yours faithfully


John McCleary, JP
Chief Executive Officer
Shire of Upper Gascoyne

MGA Zone 50		
	Easting	Northing
1	317711.196	7575092.096
2	318329.1856	7576004.812
3	318422.8327	7575942.526
4	317978.6729	7575291.092
5	317308.0299	7574302.25
6	316092.3598	7575129.024
7	316632.4804	7575922.304
8	317346.0853	7575437.121
9	317486.8975	7575244.492

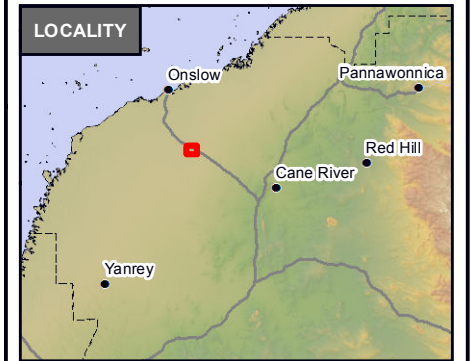




LEGEND

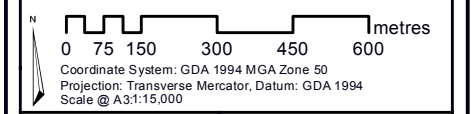
 Site Boundary

© Talis Consultants Pty Ltd ("Talis") Copyright in the drawings, information and data recorded in this document ("the information") is the property of Talis. This document and the information are solely for the use of the authorised recipient and this document may not be used, transferred or reproduced in whole or part for any purpose other than that which it is supplied by Talis without written consent. Talis makes no representation, undertakes no duty and accepts no responsibility to any third party who may use or rely upon this document or the information.



AERIAL PLAN

Desktop Assessment
Lot 150 Onslow Road
Onslow, WA 6710



Prepared: F Walker	Date: 28/11/2017
Checked: E. Porter	Project No: TW17054
Reviewed: N King	Revision: A



Figure 02