

Ordinary Meeting of Council

Tom Price



PUBLIC ATTACHMENTS Part 3

23 April 2018

Clem Thompson Sports
Pavilion
Stadium Road
Tom Price
1.00 pm



The Shire of Ashburton 10 year Strategic Community Plan (2017-2027) provides focus, direction and represents the hopes and aspirations of the Shire.

Our Vision

We will embrace our unique Pilbara environment and lifestyle through the development of vibrant, connected and active communities that have access to quality services, exceptional amenities and economic vitality.

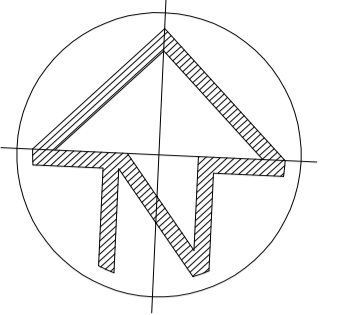


STRATEGIC DIRECTIONS

1. Vibrant and Active Communities
2. Economic Prosperity
3. Unique Heritage and Environment
4. Quality Services and Infrastructure
5. Inspiring Governance

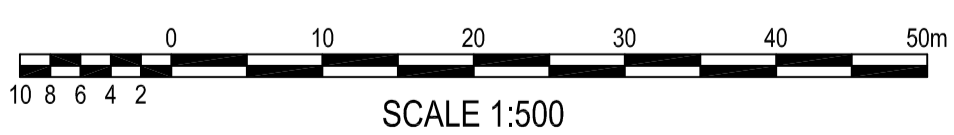


The Shire of Ashburton respectfully acknowledges the traditional custodians of this land.



LEGEND

- TYPICAL SITE LAYOUT (10m x 10m)
- SYNTHETIC GRASS OR CONCRETE AREA (3.7m x 5m)
- NOTE: LOCATION AND SIZE WILL VARY DUE TO SITE SHAPE
- PROPOSED RELOCATABLE CABIN
- LT1 - PROPOSED LONG TERM SITE No. 1
- ST1 - PROPOSED SHORT TERM SITE No. 1
- NP1 - PROPOSED NON-POWERED SHORT TERM SITE No. 1
- RK - PROPOSED RAISED KERB
- BG - PROPOSED BOOM GATE
- G - PROPOSED GAS STORAGE
- PS - PROPOSED SEWER PUMP STATION
- BBQ - PROPOSED BARBECUE AREA
- PH - PROPOSED POWER HEAD
- SWP - PROPOSED STORMWATER PIT
- PROPOSED LANDSCAPING
- PROPOSED BITUMEN SEALED ROADWAY
- PROPOSED CONCRETE FOOTPATH
- PROPOSED 315kVA ELECTRICAL TRANSFORMER
- PROPOSED 1.8m HIGH COLOURBOND FENCING
- PROPOSED 1.8m HIGH CHAIN MESH FENCING TO THE SHIRE OF ASHBURTON'S SPECIFICATIONS
- EXISTING TREE
- GW - PROPOSED GIVE WAY SIGN



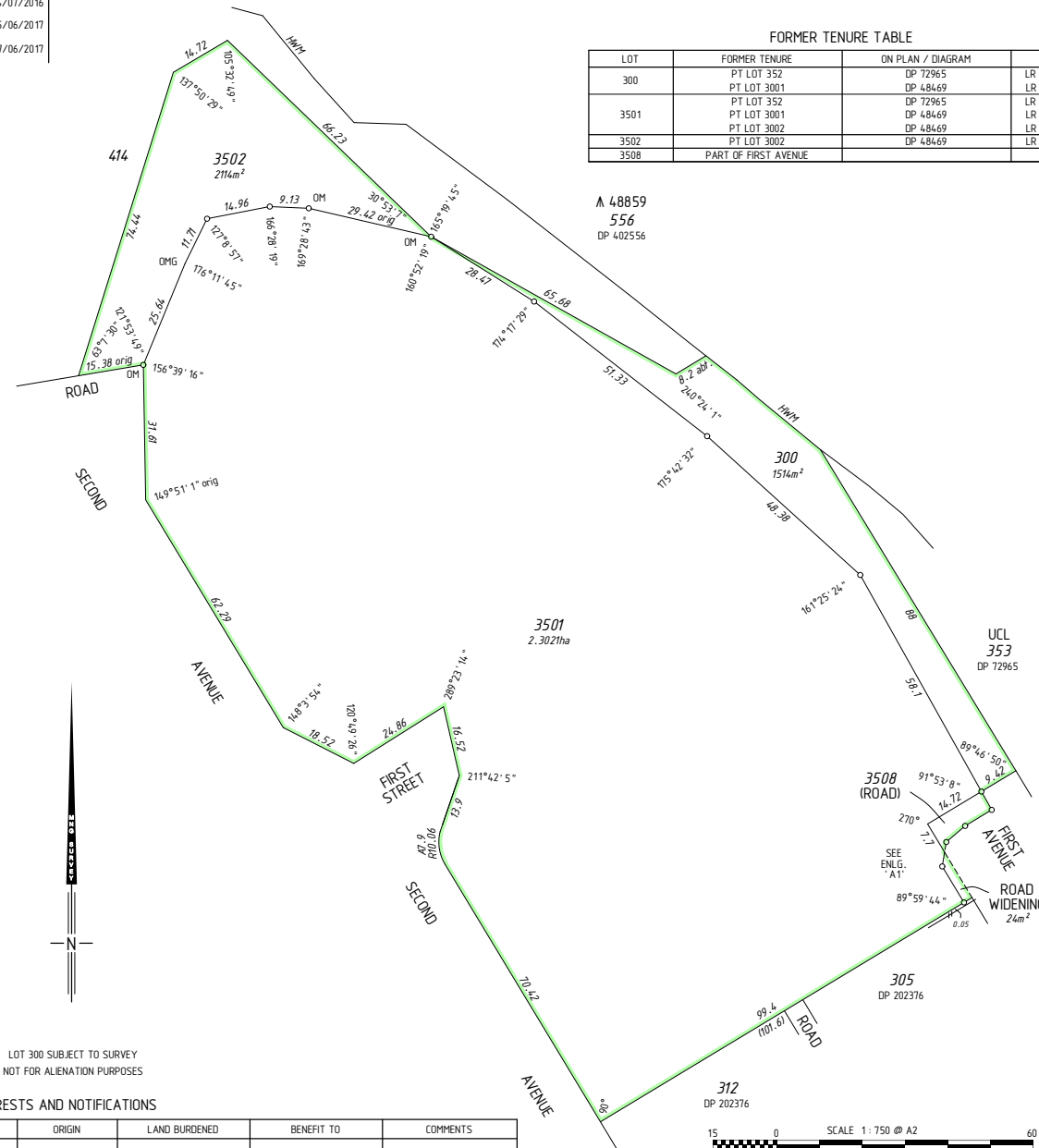
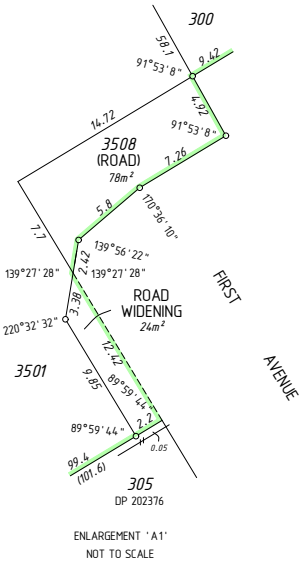
REVISION	AMENDMENTS	DATE	APP'D	SURVEYOR:	CLIENT:	PROJECT:	DESIGNED:	DRAWN:	APPROVED:				
A	ISSUE FOR REVIEW AND COMMENT	27.02.15	M.W	DATE OF SURVEY:	 MIENGINEERS SYDNEY OFFICE 83 - 89 Renwick Street, Redfern 2016 Tel (02) 8396 6565 Fax (02) 8396 6564 SOUTH COAST OFFICE 49 Berry Street, Nowra NSW 2541 Tel (02) 44 230 566 Fax (02) 44 233 228 E: info@miengineers.com W: www.miengineers.com	OCEAN VIEW CARAVAN PARK, ONSLOW RE-DEVELOPMENT PROJECT	M.W	A.S	G.S				
B	ISSUE FOR REVIEW AND COMMENT - MANAGERS RESIDENCE COMPLEX AMENDED	03.03.15	M.W	ORIGIN:			THIS DRAWING AND THE CONCEPTS CONTAINED THEREIN ARE THE PROPERTY OF MI ENGINEERS. NO UNAUTHORISED COPYING IS PERMITTED. NOTHING IS TO BE CONSTRUCTED BASED ON THIS DRAWING, OR PART OF THIS DRAWING, WITHOUT THE WRITTEN PERMISSION OF MI ENGINEERS. DRAWINGS TO BE READ IN CONJUNCTION WITH OTHER RELATED DESIGN DOCUMENTATION.	SHEET SIZE: A1	SCALE: 1:500	DATE: 15.07.15			
C	ISSUE FOR REVIEW AND COMMENT - AMENDED CHANGES FOLLOWING REVIEW MEETING	12.03.15	M.W	HEIGHT OF DATUM:							DRAWING NAME: MASTER PLAN	DRAWING NUMBER: DN140178/LP00	REVISION: F
D	ISSUE FOR REVIEW AND COMMENT - AMENDED CHANGES FOLLOWING COUNCIL MEETING	02.04.15	M.W	HORIZONTAL DATUM:									
E	90% DETAIL DESIGN FOR REVIEW & COMMENT	02.06.15	M.W										
F	ISSUE FOR TENDER	15.07.15	M.W										

VERSION	AMENDMENT	AUTHORISED BY	DATE
2	Audit Requirements	Dale C. KEIGHLEY	14/07/2016
3	Removes Lots 3503, 3504, and 9000 (ODL requirement)	Dale C. KEIGHLEY	15/06/2017
4	Audit Requirements	Dale C. KEIGHLEY	27/06/2017

HELD BY LANDGATE IN DIGITAL FORMAT ONLY

FORMER TENURE TABLE			
LOT	FORMER TENURE	ON PLAN / DIAGRAM	TITLE
300	PT LOT 352	DP 72965	LR 3020-845
	PT LOT 3001	DP 48469	LR 3147-782
3501	PT LOT 352	DP 72965	LR 3020-845
	PT LOT 3001	DP 48469	LR 3147-782
3502	PT LOT 3002	DP 48469	LR 3147-783
3508	PT LOT 3002	DP 48469	LR 3147-783
3508	PART OF FIRST AVENUE		

A 48859
556
DP 402556



LOT 300 SUBJECT TO SURVEY
NOT FOR ALIENATION PURPOSES

INTERESTS AND NOTIFICATIONS

SUBJECT	PURPOSE	STATUTORY REFERENCE	ORIGIN	LAND BURDENED	BENEFIT TO	COMMENTS

TYPE	CROWN	S.S.A.	NO
PURPOSE	SUBDIVISION		
PLAN OF	LOTS 300, 3501, 3502, 3508 (DEDICATED ROAD) AND ROAD WIDENING		
FORMER TENURE	SEE FORMER TENURE TABLE		
LOCAL AUTHORITY	SHIRE OF ASHBURTON		
LOCALITY	ONSLOW		
D.O.L. FILE	44.14-1955		
FIELD RECORD	137064		
SURVEYOR'S CERTIFICATE - REG 54			
I, Dale C. KEIGHLEY hereby certify that this plan is accurate and is a correct representation of the - (a) *survey, and/or (b) *calculations from measurements recorded in the field records, [* delete if inapplicable] undertaken for the purposes of this plan and that it complies with the relevant written law(s) in relation to which it is lodged.			
LICENSED SURVEYOR	<i>D. Keighley</i>	Dale Keighley 2017.06.28 07:51:44 +08'00'	DATE
LODGED			
16-Jun-16	N/A	19625483	ASSESS No.
DATE	FEE PAID		
I.S.C.			
R.LIST		EXAMINED	29-6-2017 DATE
WESTERN AUSTRALIAN PLANNING COMMISSION FILE EXEMPT FROM WAPC APPROVAL			
Delegated under S. 16 P&D Act 2005		DATE	
IN ORDER FOR DEALINGS			
SUBJECT TO		Reserve Action Dedication Action	
FOR INSPECTOR OF PLANS AND SURVEYS		29-6-2017	DATE
APPROVED			
INSPECTOR OF PLANS AND SURVEYS (S. 18 Licensed Surveyors Act 1909)		DATE	
DEPOSITED PLAN 408851			
SHEET 01 OF 01 SHEETS VERSION 4			
		MC MULLEN NOLAN GROUP PO Box 3526, Success W.A. 6964 Tel: (08) 6436 3509 Fax: (08) 6436 3500 Email: info@mngsurvey.com.au MNG Ref - 99725dp-002 - DP408851.CSD	

Equipment and Design for Play and Sport Areas



Jolene Humphrey
Play & Sport Consultant
22 Ranson Drive, Roelands, WA, 6226
jolene@proludic.com.au
0439 937 661



Proposal for **Onslow Playspace - Option 1** Shire of Ashburton

www.proludic.com.au

16 -18 Tepko Road, Terrey Hills, NSW, 2084 | info@proludic.com.au | 02 9485 8700



Inclusive Design Approach Rationale



'Creating an inclusive 'All Abilities' playground is giving every child the means to live their childhood to the full'

Children with disabilities are like all other children – to progress they need to develop their **physical, cognitive, psychomotor and social skills, as well as their independence.** They need to engage in the same activities as their friends, within their own capacities. They want to enjoy themselves like everyone else, with everyone else.

Creating a successful inclusive play area involves making it as accessible to as many children as possible, whilst also balancing different needs according to disabilities. The needs of carers must also be taken into consideration.

At Proludic we strive to offer all children the enjoyment of play, to facilitate playing as a shared experience and give every child the means to blossom and develop.

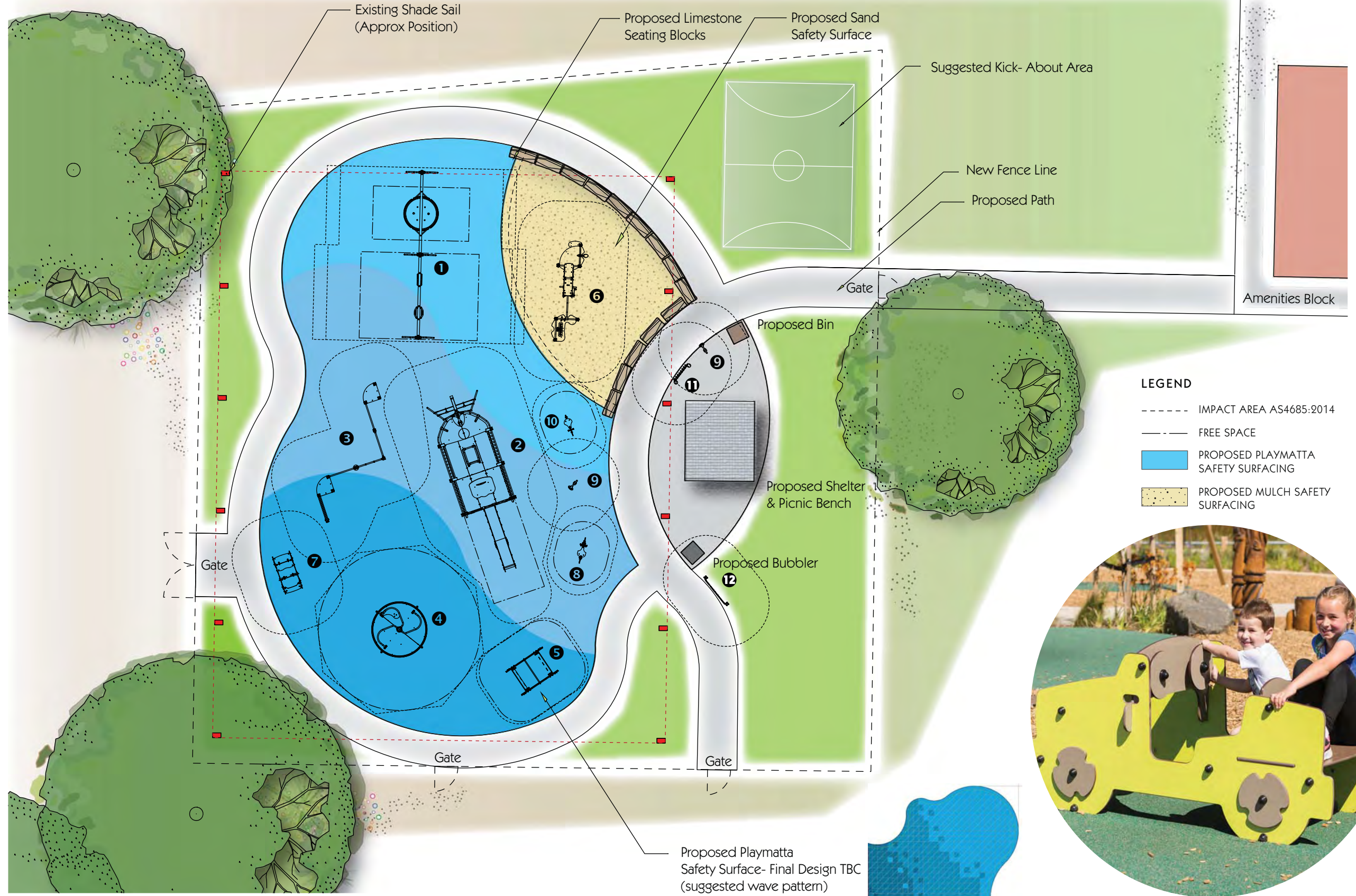
Our design approach follows our universal design principles including:

- **Encourage children to play together** by laying out the play equipment with great care to enable children and carers to move around the playground with ease, and to interact and communicate with one another.
- **Provide a wide range of play equipment and activities** to meet the needs of many types of possible disabilities.
- **Provide a number of access and exit points** on structures to prevent blockages if a difficulty is encountered.
- **Integrate wheelchair use** into various play activities, but also provide opportunities for children who are able to spend time out of their wheelchairs with assistive aids and carers.
- **Provide simple activities with gradual progression in levels of difficulty** to enable children to experience success and to also stimulate development.
- **Provide sensory equipment** to stimulate the senses and promote development. Use appropriate colours, shapes, textures and sounds. Offer activities that provide sensations that allow children to learn and feel the vitality in their body.
- Provide equipment and spaces that **allow children to withdraw for quiet periods** when they need to have a rest from what is going on around them.
- **Integrate access and the presence of carers** who need places to sit down. Carers also need to be able to take part in the play activities and move around the play equipment.



Proludic supports the aims and implementation of the **National Disability Strategy.** In line with Policy Direction 1 for the outcome of Inclusive and Accessible Communities we have incorporated Universal Design Principles into this playground proposal and our playground equipment. This will assist people with disability to live in accessible and well-designed communities with opportunity for full inclusion in social, economic, sporting and cultural life.

Onslow Playspace - Option 1



- LEGEND**
- IMPACT AREA AS4685:2014
 - FREE SPACE
 - PROPOSED PLAYMATT A SAFETY SURFACING
 - PROPOSED MULCH SAFETY SURFACING



PROJECT
ONSLow PLAYSACE
 Shire of Ashburton

DRAWING TITLE
 EQUIPMENT LAYOUT PLAN
DRAWING NO.
 010100_001

DATE
 19.03.2018
DRAWN
 MOS

PROPRIETARY & CONFIDENTIAL
 The information contained in this drawing is the sole property of Proludic Pty Ltd. Any reproduction in parts or as a whole without the written permission of Proludic Pty Ltd is prohibited.

CONCEPTUAL ONLY - NOT FOR CONSTRUCTION
 Play equipment designed and installed in accordance with Australian Standards AS/NZS 4685 : 2014.

CONTACT
 Jolene Humphrey, Play & Sport Consultant
 E-mail: jolene@proludic.com.au
 Mobile: 0439 937 661
 Phone: -



Onslow Playspace - Option 1 - Equipment Details



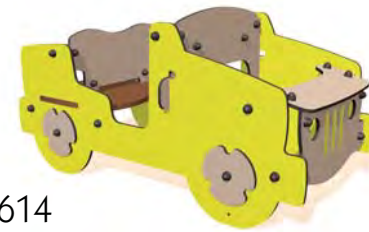
2 J1958
Tug Boat
* Supplied with metal square posts



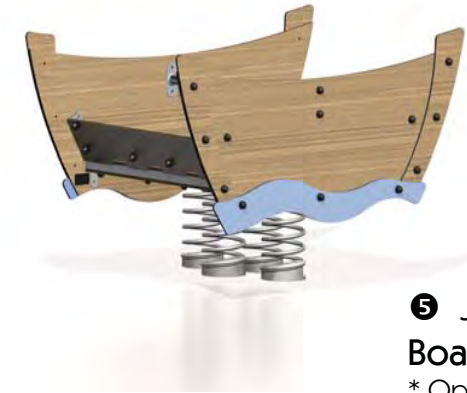
10 J821- GA
Fish Springer



1 J496
Double Bay Swing



7 J2614
Adventure Jeep



5 J859
Boat Springer
* Optional additional graphics



6 J5001-SP-M
Sand Factory



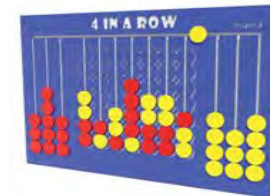
3 J1664-M
Climbing Unit



4 J2409
Accessible Carousel



9 J3410
Talk Tubes



12 R34-FIROW3
4 in A Row- Play Panel



11 R34-FIECOCH
Rainbow Chimes



8 J854
Seahorse Springer

PROJECT
ONSLow PLAYSACE
Shire of Ashburton

DRAWING TITLE
EQUIPMENT LAYOUT PLAN

DRAWING NO.
010100_001

DATE
19.03.2018

DRAWN
MOS

PROPRIETARY & CONFIDENTIAL
The information contained in this drawing is the sole property of Proludic Pty Ltd. Any reproduction in parts or as a whole without the written permission of Proludic Pty Ltd is prohibited.

CONCEPTUAL ONLY -
NOT FOR CONSTRUCTION
Play equipment designed and installed in accordance with Australian Standards AS/NZS 4685 : 2014.

CONTACT
Jolene Humphrey, Play & Sport Consultant
E-mail: jolene@proludic.com.au
Mobile: 0439 937 661
Phone: -

0 1 2 3 4 5m
SCALE 1:150 @ A3



Proludic[®]

WELCOME TO ONSLOW PLAYSPACE

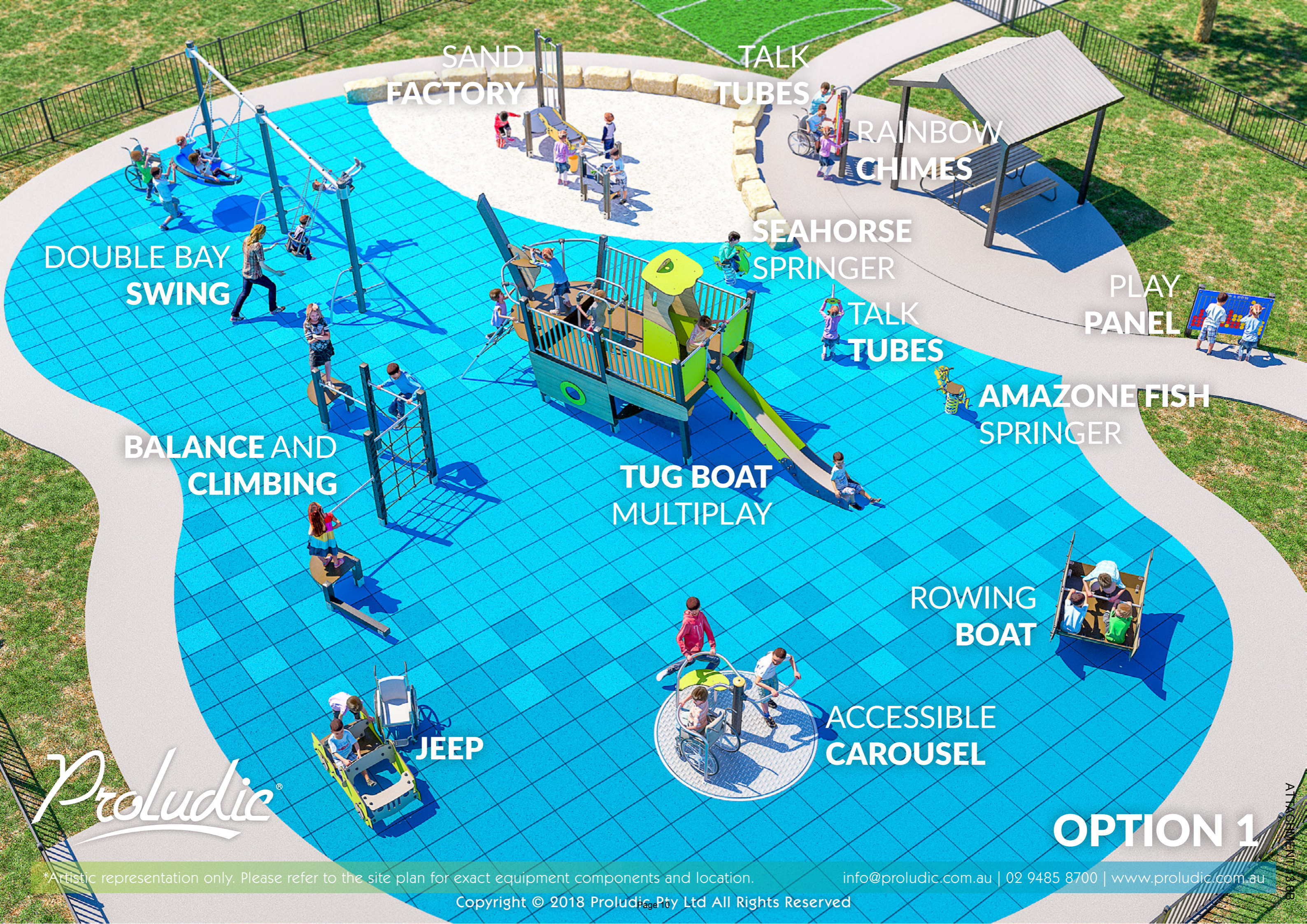


OPTION 1

*Artistic representation only. Please refer to the site plan for exact equipment components and location.

info@proludic.com.au | 02 9485 8700 | www.proludic.com.au

Copyright © 2018 Proludic Pty Ltd All Rights Reserved



SAND
FACTORY

TALK
TUBES

RAINBOW
CHIMES

DOUBLE BAY
SWING

SEAHORSE
SPRINGER

PLAY
PANEL

TALK
TUBES

AMAZONE FISH
SPRINGER

BALANCE AND
CLIMBING

TUG BOAT
MULTIPLAY

ROWING
BOAT

JEEP

ACCESSIBLE
CAROUSEL

Proludic[®]

OPTION 1

*Artistic representation only. Please refer to the site plan for exact equipment components and location.

info@proludic.com.au | 02 9485 8700 | www.proludic.com.au

Copyright © 2018 Proludic Pty Ltd All Rights Reserved

ATTACHMENT 1 & 2



OPTION 1

*Artistic representation only. Please refer to the site plan for exact equipment components and location.

info@proludic.com.au | 02 9485 8700 | www.proludic.com.au



OPTION 1

*Artistic representation only. Please refer to the site plan for exact equipment components and location.

info@proludic.com.au | 02 9485 8700 | www.proludic.com.au

Copyright © 2018 Proludic Pty Ltd All Rights Reserved

The Tug Boat



J1958SP

Children set sail for a world of adventure, crossing the stormy seas, discovering a desert island, or simply dropping the anchor to go fishing with friends, any number of stories can be created around the theme of water. Themed items are ideal all-in-one play solutions that optimise the use of space. Each of the structures is equipped with numerous play elements, designed to test motor and fine motor skills.



Range:	Themed Play
Ages:	3+ yrs
Capacity:	17
Size:	W 6.9m D 2.16m H 3.05m
Free Height of Fall:	1.37m



* Square Posts Supplied in Metal Version



[Click Here for more info...](#)

*Similar Vessel Illustrated



1 The coloured panels are made from a 13mm thick compact material (HPL). Robust in construction, it offers excellent resistance to weathering and vandalism.



2 The vertical 95mm square posts are made of galvanised, lacquered steel. The two-tone grey graining finish has a slight undulating surface for increased scratch resistance.



3 The sliding surface is made of stainless steel 2mm thick, shaped, bent and rolled in one piece.



4 The shaped beam is made of oven-cured laminated wood with a surface coating. They are 95mm thick, 200mm wide, and 3.2m high, and gives the structure considerable strength.

Aquatica- The Tug Boat - Play Features

J1958



1 Porthole Peeking...

Children set sail for a world of adventure, crossing the stormy seas, discovering a desert island, or simply dropping the anchor to go fishing with friends, any number of stories can be created around the theme of water. Each of the structures is equipped with numerous play elements, designed to test motor and fine motor skills.

Manipulative and role play elements are accessible at ground level. Nets and ladders provide a challenge to get to the upper deck. Then there's the question of who takes the helm, who scans the horizon or who jumps on the slide to set off on a new adventure.



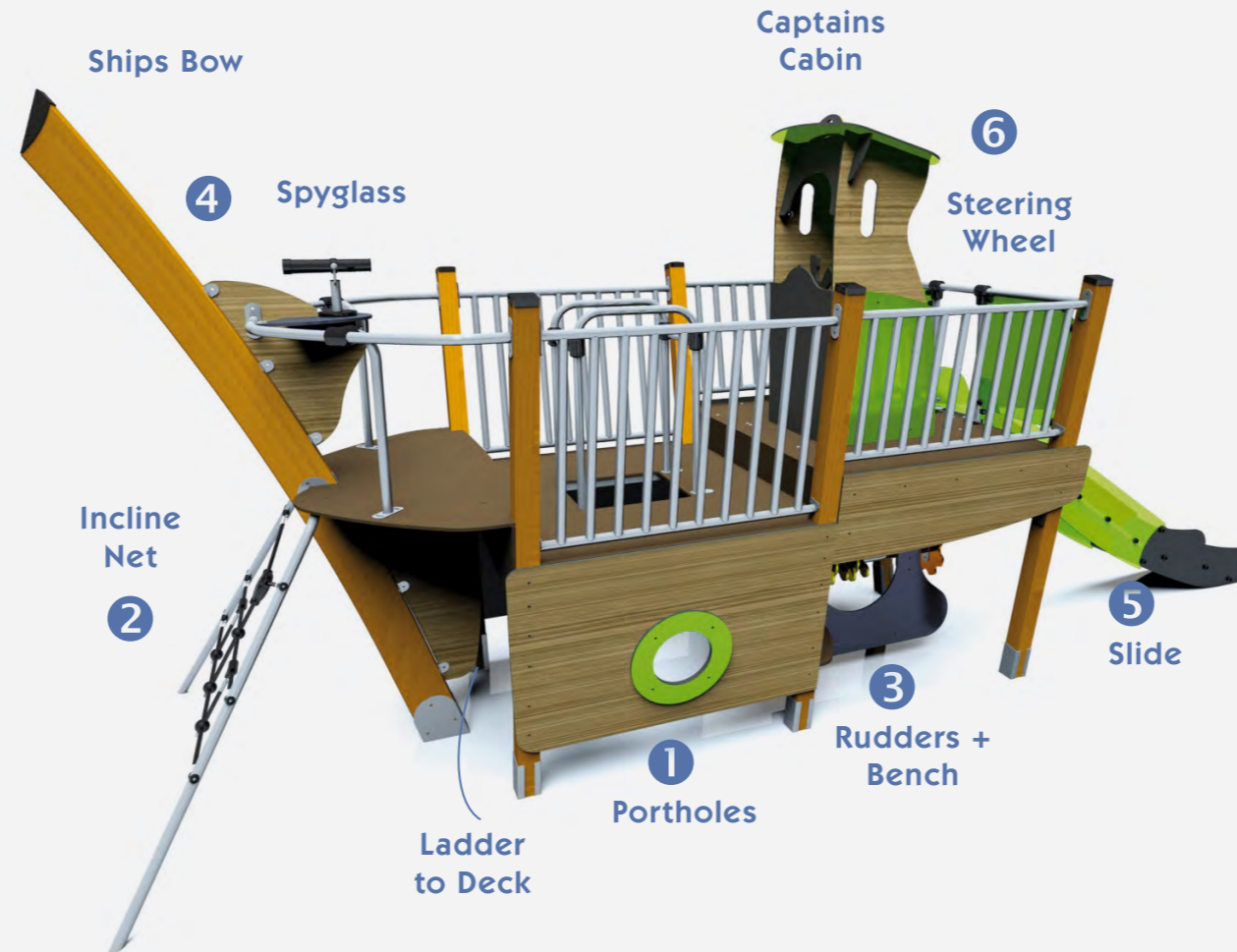
2 Climb Aboard ...



3 Fix the Rudder...



4 Spyglass Lookout ...



5 Slide Down...



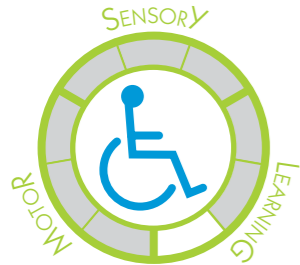
6 Captain the Boat ...

Metal Double Bay Swing with Pod



J496

Swings have given generations of children the sensation of flying through the air and the fun of reaching for the sky! Swings combine motor coordination with sensory stimulation, while repetition of movement also has a calming effect. The pod seat allows for a seated or lying position and is at a height suitable for easy transfer from a wheelchair. The toddler and junior seats allow children to select a supportive seat appropriate to their age.



Range:	Traditional
Ages:	2+ yrs
Capacity:	7
Size:	W 6.36m D 1.22m H 2.63m
Free Height of Fall:	1.55m



[Click Here for more info...](#)

Shang Street, QLD



1 The 125mm diameter posts are made of lacquered galvanised steel. The two-tone grey graining finish has a slightly undulating surface for increased scratch resistance.



2 The pod is made from a single piece of rotary moulded polyethylene. It is fixed to a stainless steel frame that is fitted with buffers.



3 The horizontal beams of the swings are made of non-painted galvanised steel. The swing bearings are made of stainless steel.



4 The fixings are made of stainless steel and protected by anti-vandalism polyamide caps.

Accessible Carousel



J2409

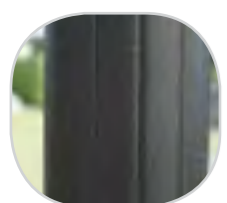
Rotating equipment is suitable for children of all ages. Younger children gradually learn about the fun of speed on roundabouts. As they gain self-confidence children can test their sense of balance and their limits on equipment that combines rotating and swinging. Rotating equipment with low platforms enables access for children with motor impairments.



Range:	Rotating
Ages:	2+ yrs
Capacity:	6
Size:	W 2.04m D 2.04m H1.2m
Free Height of Fall:	1m



[Click Here for more info...](#)



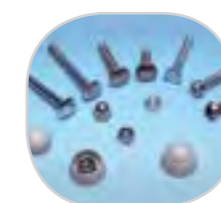
1 The 157mm diameter post is made of lacquered galvanised steel. The two-tone grey graining finish has a slightly undulating surface for increased scratch resistance.



2 The platform is made from aluminium.



4 The tubes are made of stainless steel, diameter 40mm, guaranteeing lasting durability and reliability of the equipment.



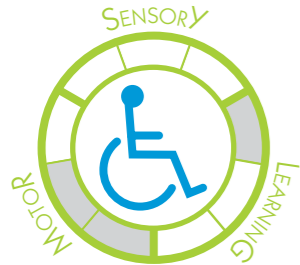
4 The stainless steel fixings are protected by polyamide anti-vandalism caps.

The Adventure JEEP

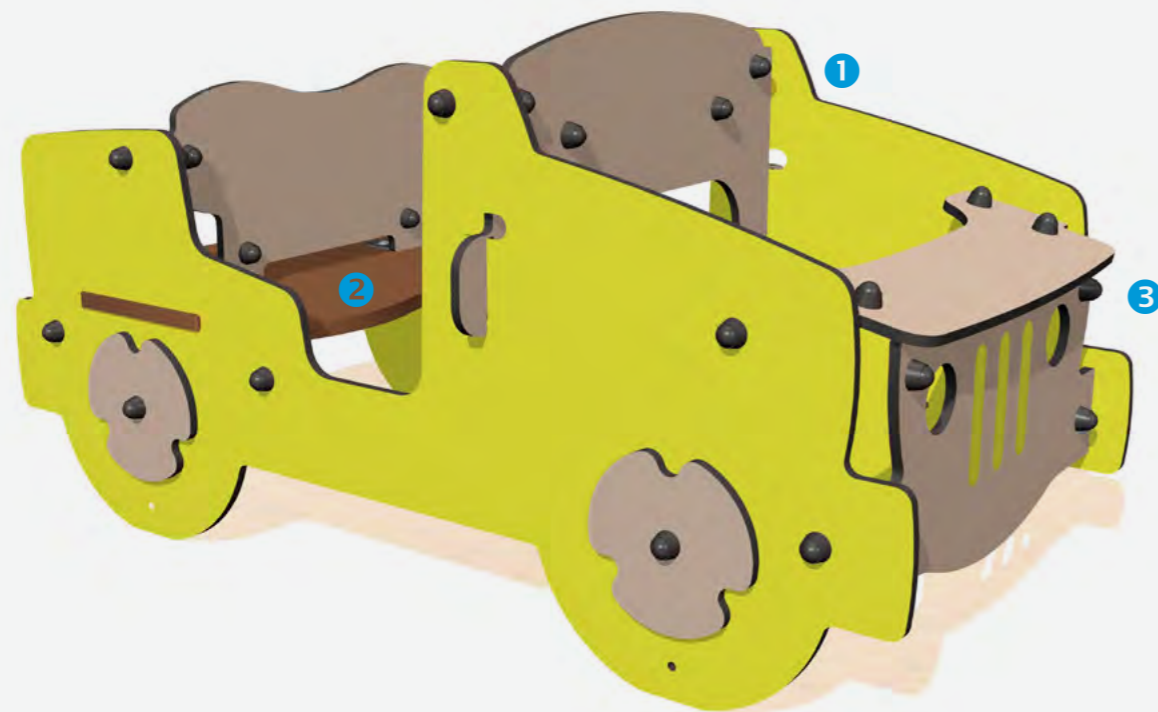


J2614

The Adventure themed equipment encourages imaginative play and transports children into the leafy undergrowth of a jungle environment. Aboard the jeep the young explorers can go in search of the secret temple! Supplied with two steering wheels and two seats there is room for all the members of an expedition to explore together. With room for older explorers to join in the fun – it's a great opportunity for inter generational play!

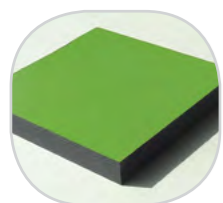


Range:	Themed Play
Ages:	2+ yrs
Capacity:	4
Size:	W 1.50m D 0.70m H 0.80m
Free Height of Fall:	0.35m

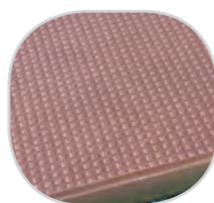


[Click Here for more info...](#)

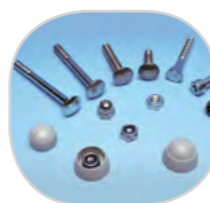
Bert Payne Playground , NSW



1 The coloured panels are made with a compact material 13mm thick. It withstands weathering very well. The coloured surfaces stand up well to UV radiation and resist damage.



2 The platforms are made from a 12.5mm thick, textured, non-slip compact material (HPL).



3 The stainless steel fixings are protected by polyamide anti-vandalism caps.

The Sand Factory



J5001M-SP

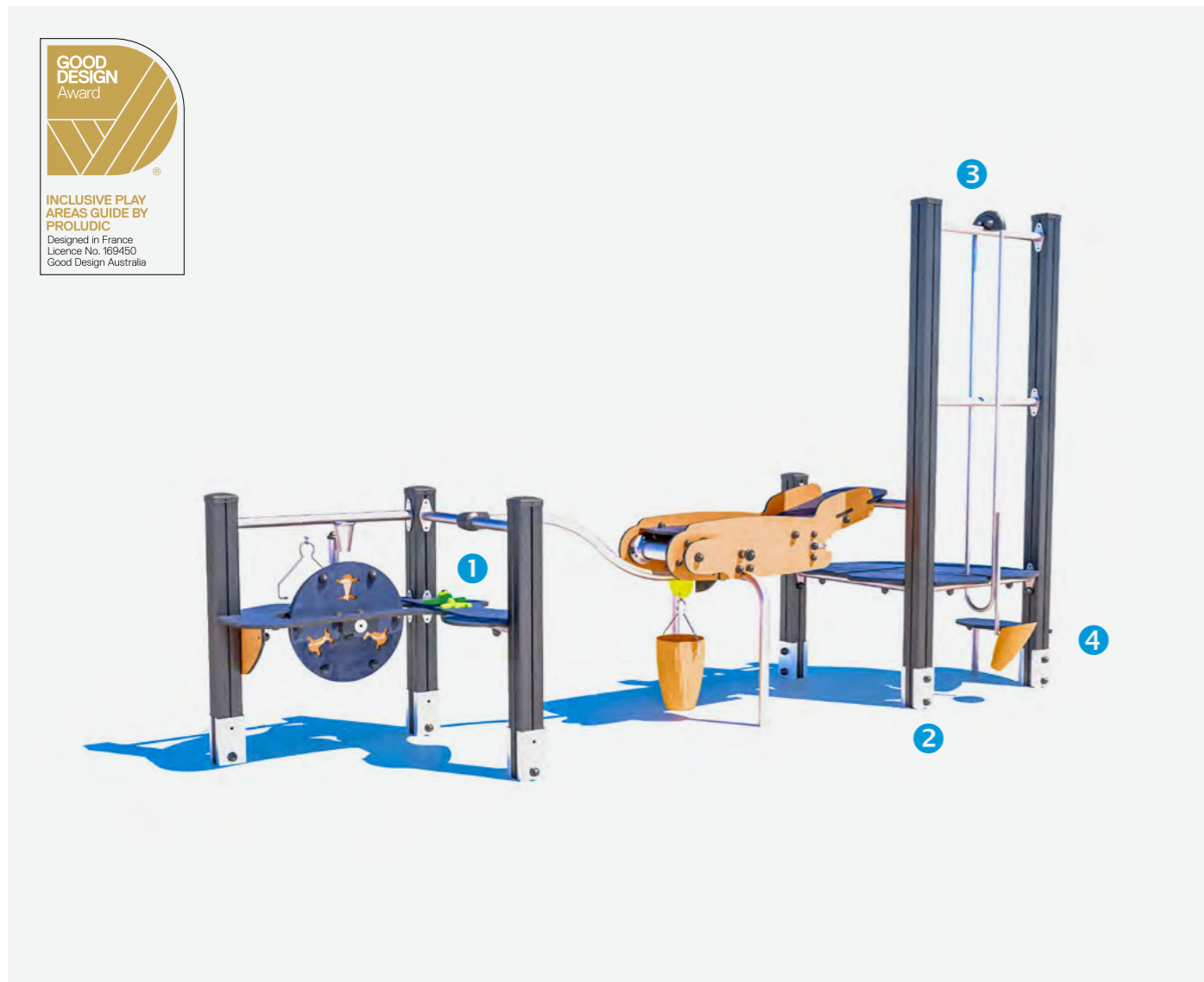
The Sand Factory reinvents the traditional playground sandpit providing even more play value in a clean, safe environment. In a play area, children can spend hours handling this material, which helps them to develop their motor skills and enhance their concentration through play.



Range:	Sand & Water Play
Ages:	2+yrs
Capacity:	8
Size:	W 3.75m D 1.35m H 2.18m
Free Height of Fall:	0.6m



INCLUSIVE PLAY AREAS GUIDE BY PROLUDIC
Designed in France
Licence No. 169450
Good Design Australia



[Click Here for more info...](#)



*Timber Version Shown



1 The tables are made with a compact material 13mm thick. It is made up of 70% of softwood fibres and 30% of thermosetting resin, and it stands up to weathering and sand abrasion.



2 Galvanised, painted steel posts 95x95mm, guarantee long term durability. The posts are protected by injected polyamide caps.



3 The tubes are made of stainless steel, diameter 40mm, guaranteeing lasting durability and reliability of the equipment. Injection moulded polyamide fixings connect the posts with the platforms and the various play features.



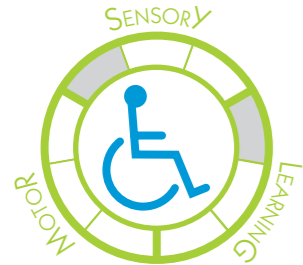
4 The fixings are made of stainless or plated steel and protected by anti-vandal polyamide caps.

Stomp The Seahorse

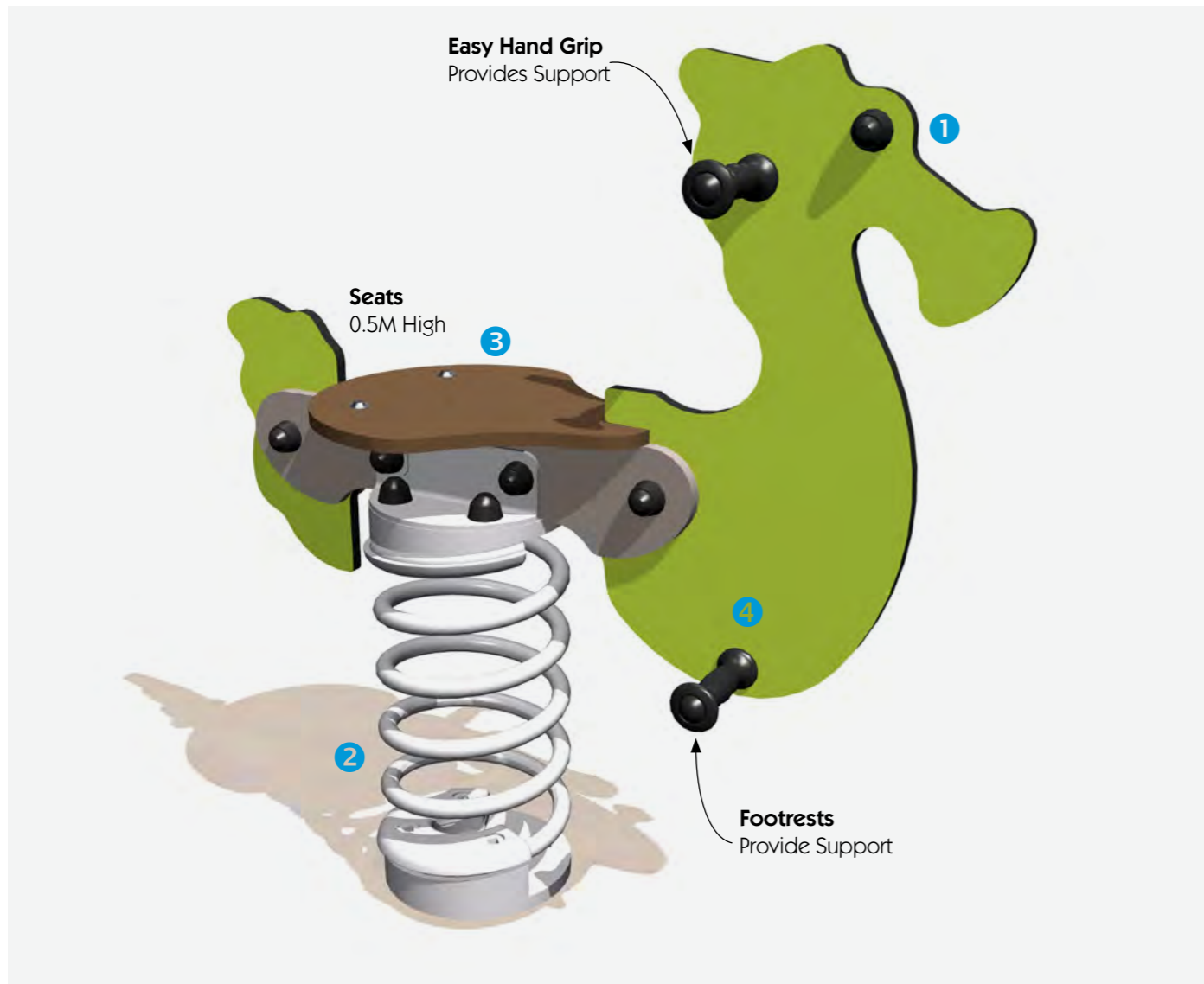


J854

The joy of riding a springer is an essential childhood experience. Springers help children develop motor skills and the sense of balance. They are ergonomically designed for maximum comfort and safety with wide seat panels, handles and footrests, and may also include side panels and backrests for additional body support. Springer shapes stimulate the imagination and enhance the playfulness of a playground.

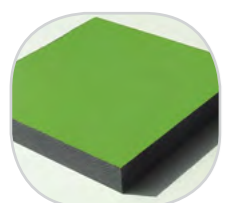


Range:	Moving
Ages:	2+ Years
Capacity:	1
Size:	W 0.82m D 0.3m H 0.85m
Free Height of Fall:	0.52m



[Click Here for more info...](#)

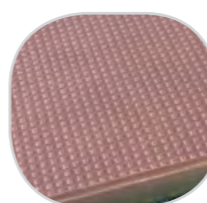
Dampier, WA



1 The coloured panels are made from a 13mm thick compact material (HPL). Robust in construction, it offers excellent resistance to weathering and vandalism.



2 The springs are made from Grade 35SCD6 steel, shot blasted, stress relieved, zinc coated and finished with two coats of epoxy polyester powder.



3 The 19mm thick seats are made from a textured, non-slip compact material (HPL).



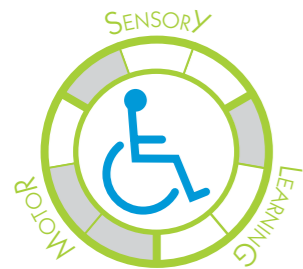
4 The handles and footrests are made of very strong polyamide plastic.

Rowing Boat



J859

Unique in terms of its size, it can cater for up to 6 users at any one time encouraging group play. Its size means it is accessible for older users with learning difficulties who want to enjoy the rocking motion. The spring rides are ergonomically designed for maximum user comfort and safety. The shapes are designed to stimulate the imagination.

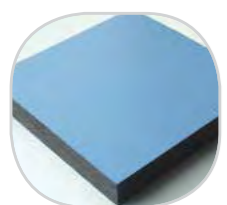


Range:	Moving
Ages:	2+ yrs
Capacity:	6
Size:	W 1.7m D 1.1m H 1.0m
Free Height of Fall:	0.51m

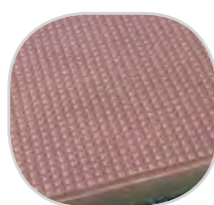


[Click Here for more info...](#)

Oakridge Reserve, VIC



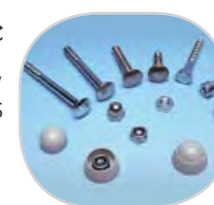
1 The coloured panels are made from a 13mm thick compact material (HPL). Robust in construction, it offers excellent resistance to weathering and vandalism.



2 The seats are made with a compact material 13mm thick. A mix of softwood fibres and thermosetting resin, which stands up to weathering very well.



3 The springs are made from Grade 35SCD6 steel, shot blasted, stress relieved, zinc coated and finished with two coats of epoxy polyester powder.



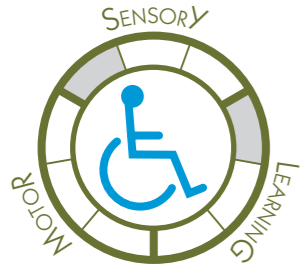
4 The stainless steel fixings are protected by polyamide anti-vandalism caps.

Frankie the Fish Amazone



J821-GA

Grafic Games reinvents the rules for playground equipment, producing a result that is innovative, personalised and unique. The Amazone theme plunges children into a complete change of scenery in which the environment is transformed into a tropical jungle. The play equipment is covered with elements replicating lush, savage vegetation, large leaves, branches and exotic animals provide a unique playground adventure.



Range:	Moving
Ages:	2+ yrs
Capacity:	1
Size:	W 0.9m D 0.3m H 0.8m
Free Height of Fall:	0.47m

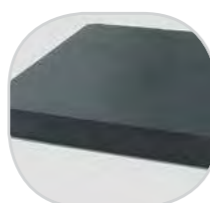


[Click Here for more info...](#)

*J821 without Grafic Games



1 The coloured panels are made from a 13mm thick compact material (HPL). Robust in construction, it offers excellent resistance to weathering and vandalism.



2 The seats are made with a compact material 13mm thick. It is made up of 70% softwood fibres and 30% thermosetting resin, and stands up to weathering very well.



3 The springs are made from Grade 35SCD6 steel, shot blasted, stress relieved, zinc coated and finished with two coats of epoxy polyester powder.



4 The handles and footrests are made of very strong polyamide plastic.

Balance and Climbing Unit

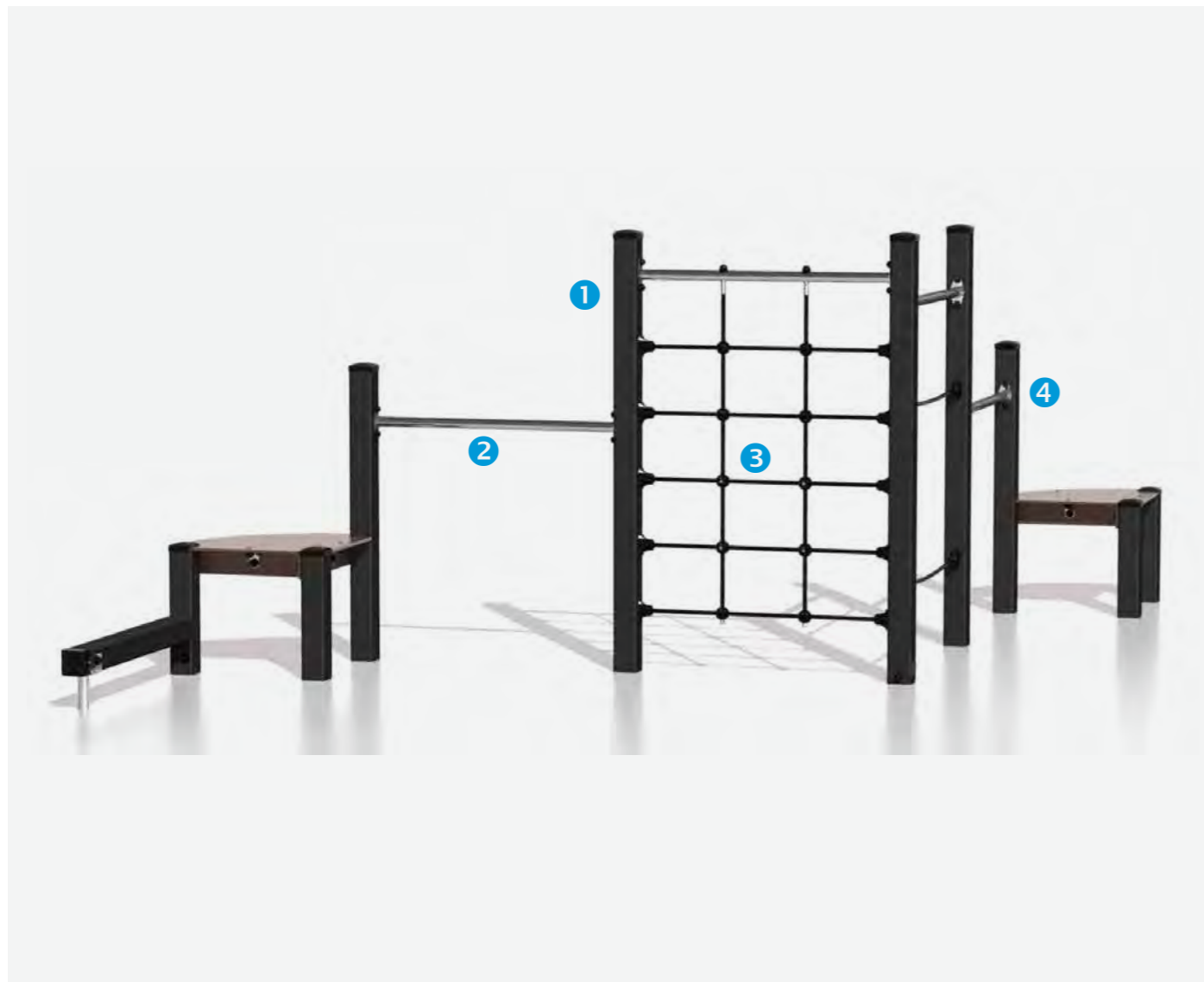


J1664M

Balancing and Climbing equipment are perfect for children to test their balance and agility while developing concentration and co-ordination skills. A wide variety of equipment including nets, climbing walls, ladders, horizontal bars and pyramids provide varying levels of difficulty for different age groups and ability levels.



Range:	Balancing and Climbing
Ages:	2+ yrs
Capacity:	11
Size:	W 4.0m D 2.35m H 1.8m
Free Height of Fall:	1.7m



[Click Here for more info...](#)

*Similar Timber Unit Illustrated

1 The posts are made of lacquered galvanised steel. The two-tone grey graining finish has a slightly undulating surface for increased scratch resistance.

2 The tubes are made of stainless steel, guaranteeing lasting durability and reliability of the equipment.

3 The rope is made of galvanised steel cable covered with polypropylene. The cables are linked together and held in place by injected polyamide spheres.

4 The fixings are made of stainless steel and protected by anti-vandalism polyamide caps

Four In A Row Play Panel

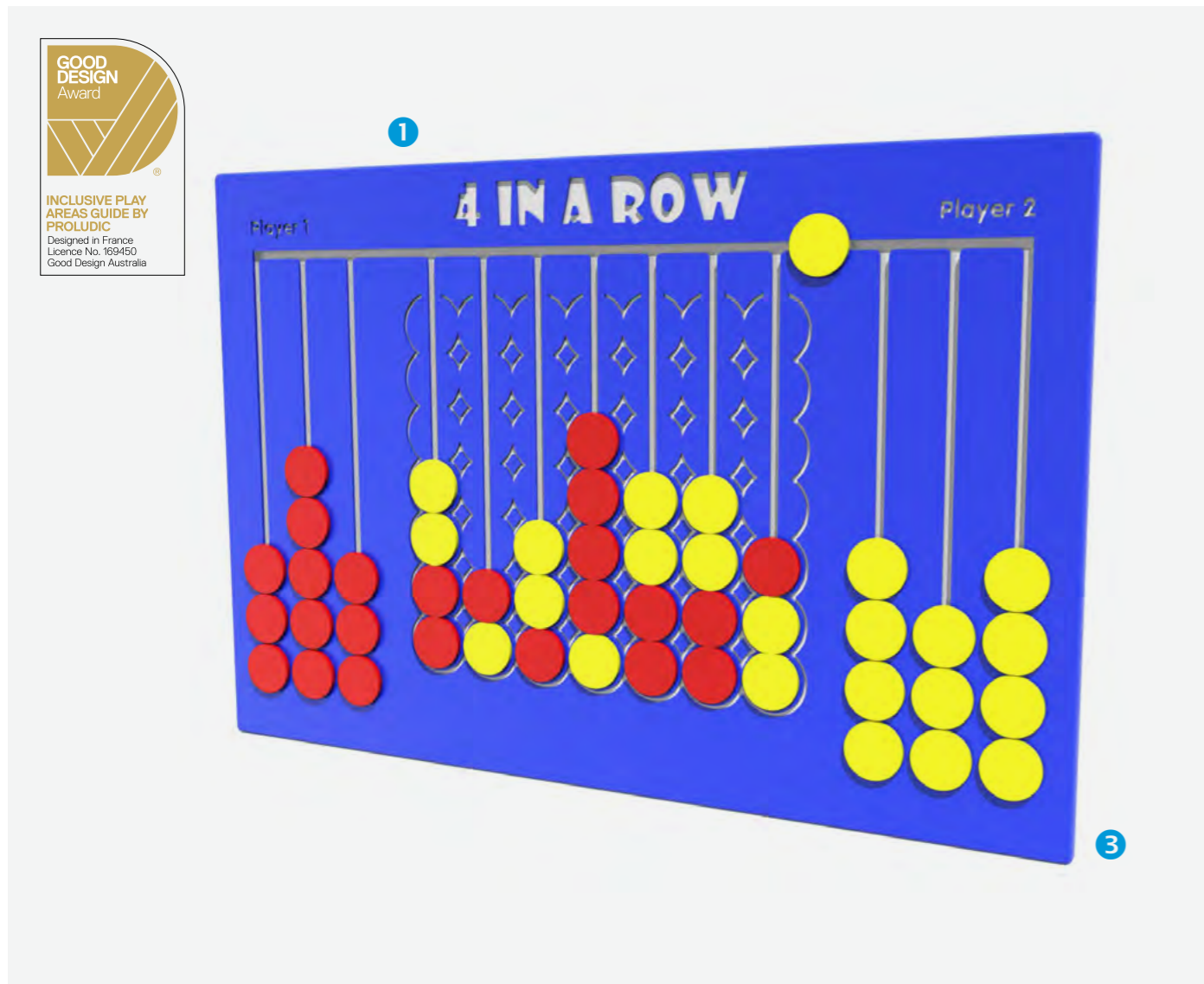


R34-FIROW3

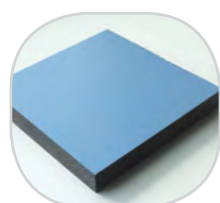
Play panels and interactive play experiences provide young children with yet another way of having fun, through a learning approach that enhances their ability to observe and concentrate. Many of the play panels include educational games with movable elements that children can learn from and also enjoy using.



Range:	Play Panels
Ages:	2+ yrs
Capacity:	2
Size:	W 1.20m D 0.03m H 0.80m
Free Height of Fall:	0m



[Click Here for more info...](#)



1 The coloured panels are made with High Density Polyethylene (HDPE) with orange peel texture finish.



2 The 95mm square posts are made of painted steel, ensuring robustness and durability



3 The stainless steel fixings are protected by polyamide anti-vandalism caps.

Rainbow Chimes



R34-FIECOCH

Play panels provide young children with yet another way of having fun, through a learning approach that enhances their ability to observe and concentrate. Many of the play panels include educational games with movable elements that children can learn from and also enjoy using.



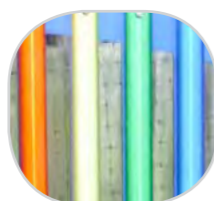
Range:	Play Panels
Ages:	4+yrs
Capacity:	2
Size:	W 0.90m D 0.20m H 1.4m
Free Height of Fall:	0m



Click Here for more info... Frank Beckman Playground, NSW



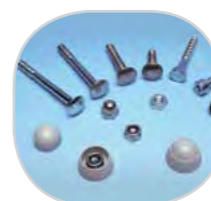
1 The posts are 120 mm in diameter made from 100% recycled material, with a heavy textured finish.



2 Anodised aluminium chimes with a smooth finish are pentatonic notes C4 to C5 with a medium alto pitch.



3 The beaters are fully moulded from polyurethane which adds strength.



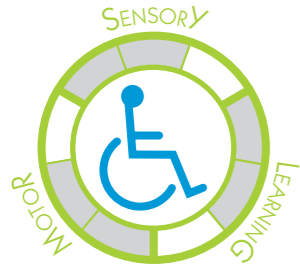
4 All fixings are made from stainless steel.

Tubophone



J3410

Play panels and interactive play experiences provide young children with yet another way of having fun, through a learning approach that enhances their ability to observe and concentrate. Many of the play panels include educational games with movable elements that children can learn from and also enjoy using.

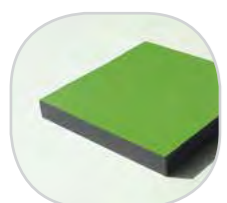


Range:	Play Panels
Ages:	2+ yrs
Capacity:	2
Size:	W 0.20m D 0.50m H 1.15m
Free Height of Fall:	0m



[Click Here for more info...](#)

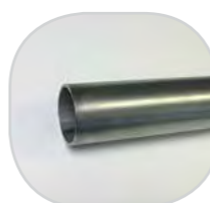
Waverley Park, VIC



1 The coloured panels are made with a compact material 13mm thick. It is made up of 70% of softwood fibres and 30% of thermosetting resin, and it stands up to weathering very well (sun, rain, damp, etc.).



2 Galvanised, painted steel posts 95x95mm, guarantee long term durability.



3 The tubes are made of stainless steel, diameter 40mm, guaranteeing lasting durability and reliability of the equipment.



4 The fixings are made of stainless or plated steel and protected by anti-vandal polyamide caps.

Equipment and Design for Play and Sport Areas



Jolene Humphrey
Play & Sport Consultant
22 Ranson Drive, Roelands, WA, 6226
jolene@proludic.com.au
0439 937 661



Proposal for **Onslow Playspace - Option 2** Shire of Ashburton

www.proludic.com.au

16 -18 Tepko Road, Terrey Hills, NSW, 2084 | info@proludic.com.au | 02 9485 8700



Inclusive Design Approach Rationale



'Creating an inclusive 'All Abilities' playground is giving every child the means to live their childhood to the full'

Children with disabilities are like all other children – to progress they need to develop their **physical, cognitive, psychomotor and social skills, as well as their independence.** They need to engage in the same activities as their friends, within their own capacities. They want to enjoy themselves like everyone else, with everyone else.

Creating a successful inclusive play area involves making it as accessible to as many children as possible, whilst also balancing different needs according to disabilities. The needs of carers must also be taken into consideration.

At Proludic we strive to offer all children the enjoyment of play, to facilitate playing as a shared experience and give every child the means to blossom and develop.

Our design approach follows our universal design principles including:

- **Encourage children to play together** by laying out the play equipment with great care to enable children and carers to move around the playground with ease, and to interact and communicate with one another.
- **Provide a wide range of play equipment and activities** to meet the needs of many types of possible disabilities.
- **Provide a number of access and exit points** on structures to prevent blockages if a difficulty is encountered.
- **Integrate wheelchair use** into various play activities, but also provide opportunities for children who are able to spend time out of their wheelchairs with assistive aids and carers.
- **Provide simple activities with gradual progression in levels of difficulty** to enable children to experience success and to also stimulate development.
- **Provide sensory equipment** to stimulate the senses and promote development. Use appropriate colours, shapes, textures and sounds. Offer activities that provide sensations that allow children to learn and feel the vitality in their body.
- Provide equipment and spaces that **allow children to withdraw for quiet periods** when they need to have a rest from what is going on around them.
- **Integrate access and the presence of carers** who need places to sit down. Carers also need to be able to take part in the play activities and move around the play equipment.



Proludic supports the aims and implementation of the **National Disability Strategy.** In line with Policy Direction 1 for the outcome of Inclusive and Accessible Communities we have incorporated Universal Design Principles into this playground proposal and our playground equipment. This will assist people with disability to live in accessible and well-designed communities with opportunity for full inclusion in social, economic, sporting and cultural life.

Onslow Playspace - Option 2



PROJECT
ONSLow PLAYSACE
 Shire of Ashburton

DRAWING TITLE
 EQUIPMENT LAYOUT PLAN
DRAWING NO.
 010100_002

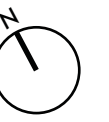
DATE
 19.03.2018
DRAWN
 MOS

PROPRIETARY & CONFIDENTIAL
 The information contained in this drawing is the sole property of Proludic Pty Ltd. Any reproduction in parts or as a whole without the written permission of Proludic Pty Ltd is prohibited.

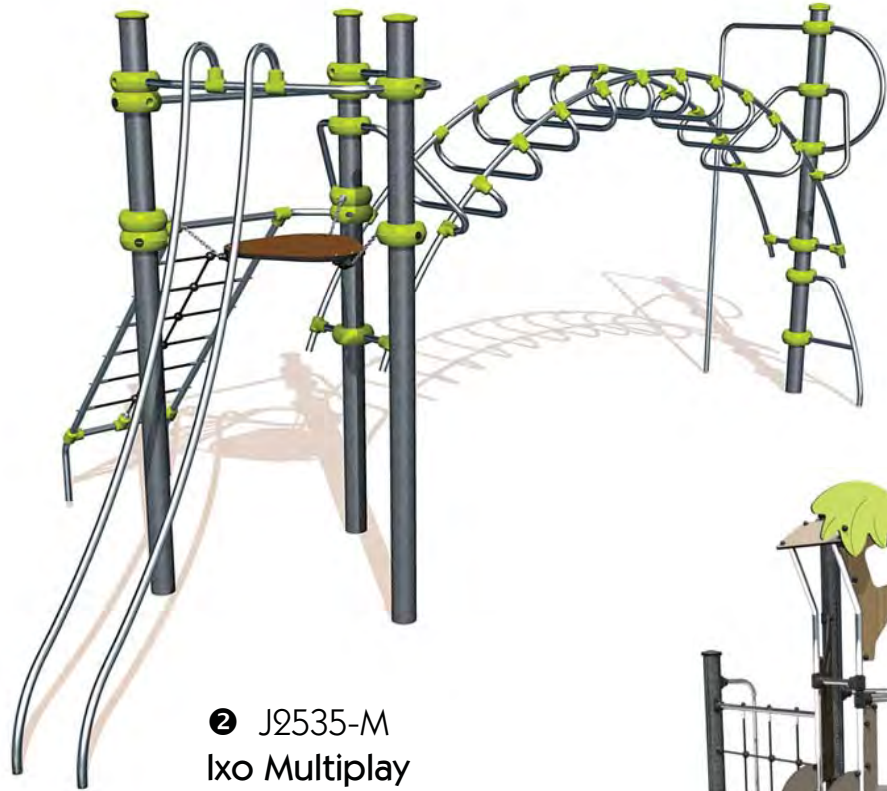
CONCEPTUAL ONLY - NOT FOR CONSTRUCTION
 Play equipment designed and installed in accordance with Australian Standards AS/NZS 4685 : 2014.

CONTACT
 Jolene Humphrey, Play & Sport Consultant
 E-mail: jolene@proludic.com.au
 Mobile: 0439 937 661
 Phone: -

0 1 2 3 4 5m
SCALE 1:150 @ A3



Onslow Playspace - Option 2 - Equipment Details



2 J2535-M Ixo Multiplay



3 J38503 Adventure Multiplay



7 J2401 Tournicolo



8 J827 Duo Springer



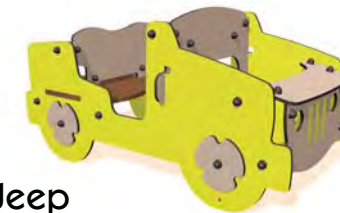
9 J820 Snake Springer



10 J3410 Talk Tubes



1 J496 Double Bay Swing



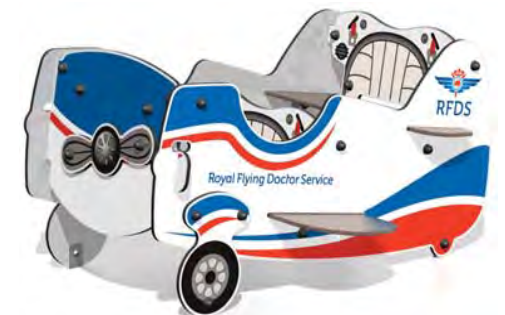
6 J2614 Adventure Jeep



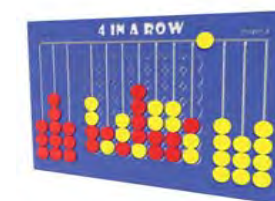
13 J3501 Rodeoboard



4 J254 Climbing Hut



5 Z16-2612 RFDS Jet



12 R34-FIROW3 4 in A Row- Play Panel



11 R34-FIECOCH Rainbow Chimes

PROJECT
ONSLow PLAYSACE
Shire of Ashburton

DRAWING TITLE
EQUIPMENT LAYOUT PLAN
DRAWING NO.
010100_002

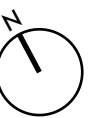
DATE
19.03.2018
DRAWN
MOS

PROPRIETARY & CONFIDENTIAL
The information contained in this drawing is the sole property of Proludic Pty Ltd. Any reproduction in parts or as a whole without the written permission of Proludic Pty Ltd is prohibited.

CONCEPTUAL ONLY - NOT FOR CONSTRUCTION
Play equipment designed and installed in accordance with Australian Standards AS/NZS 4685 : 2014.

CONTACT
Jolene Humphrey, Play & Sport Consultant
E-mail: jolene@proludic.com.au
Mobile: 0439 937 661
Phone: -

0 1 2 3 4 5m
SCALE 1:150 @ A3



Ixo Metal

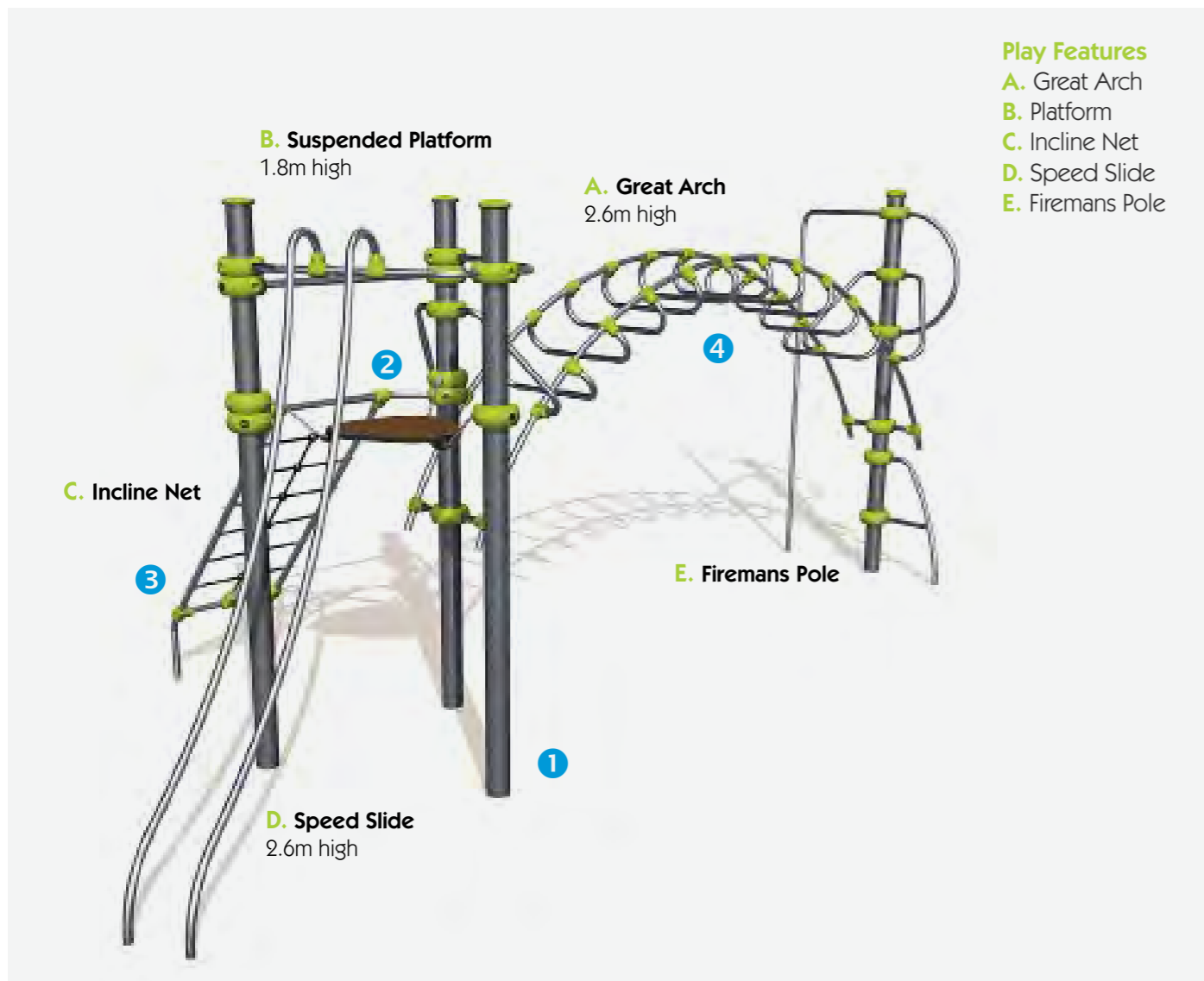


J2535M

The Ixo range has been designed with pre-teens in mind. With its smooth lines and contemporary design, Ixo is equally at home in rural or urban settings. The wide variety of testing elements gives it widespread, long lasting appeal for junior users in any playground.



Range:	Multi-Play
Ages:	6+ yrs
Capacity:	14
Size:	W 7.43m D 2.99m H 3.0m
Free Height of Fall:	2.40m



- Play Features**
- A. Great Arch
 - B. Platform
 - C. Incline Net
 - D. Speed Slide
 - E. Firemans Pole

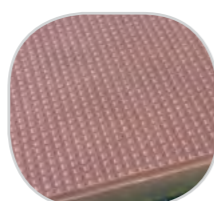


[Click Here for more info...](#)

Frank Beckman Park, NSW



1 The 125mm diameter posts are made of lacquered galvanised steel. The two-tone grey graining finish has a slightly undulating surface for increased scratch resistance.



2 The platforms are made from a 12.5mm thick, textured, non-slip compact material (HPL).



3 The ropes are made of galvanised steel cable covered with polypropylene. Injection moulded polyamide connectors link the cables and keep the nets in shape.



4 The tubes are made of stainless steel guaranteeing lasting durability and reliability of the equipment.

Diabolo Adventure



J38503

The Adventure themed Diabolo transports children into the leafy undergrowth of a jungle environment. Along the way they will come in contact with a whole host of wonderful wild animals. Each of the structures comes complete with a wide range of play elements containing challenges to stimulate the senses. The ideal item for a neighbourhood park appealing to a wide range of age groups.

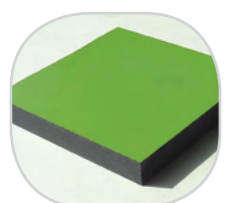


Range:	Themed Play
Ages:	2+ yrs
Capacity:	30
Size:	W 5.20m D 4.80m H 3.0m
Free Height of Fall:	1.80m



[Click Here for more info...](#)

Cummins Reserve, SA



1 The coloured panels are made from a 13mm thick compact material (HPL). Robust in construction, it offers excellent resistance to weathering and vandalism.



2 The 125mm diameter posts are made of lacquered galvanised steel, ensuring robustness and durability. The caps are made of injection moulded polyamide.



3 The sliding surface is made of stainless steel 2mm thick, shaped, bent and rolled in one piece.



4 The tubes are made of stainless steel, diameter 40mm, guaranteeing lasting durability and reliability of the equipment.

Diabolo Adventure Play Features

J38503

The Adventure theme transports children into the leafy undergrowth of a jungle environment. Either aboard the jeep or by crossing the suspended bridge, the young explorers go in search of a secret temple, meeting exotic animals along the way. When combined with children's imagination the equipment becomes the strong point for a host of fun adventures. The numerous play panels add to the theme and test children's problem solving skills.



Spin the Tail...



Find the Monkey...



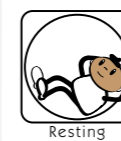
Play the Tribal Queen...



Learn the Alphabet...



Match the Footprint..



Hang out with Friends...



Slide 1.17m

Slide 0.6m

Seat with Lookout

Climbing Wall

Stairs with Hand Support



Climbing Net

Bridge with Support

Movable Tail

Low Level Inclined Ramp

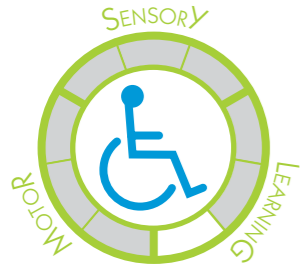
*Available in 4 different themes

Metal Double Bay Swing with Pod



J496

Swings have given generations of children the sensation of flying through the air and the fun of reaching for the sky! Swings combine motor coordination with sensory stimulation, while repetition of movement also has a calming effect. The pod seat allows for a seated or lying position and is at a height suitable for easy transfer from a wheelchair. The toddler and junior seats allow children to select a supportive seat appropriate to their age.

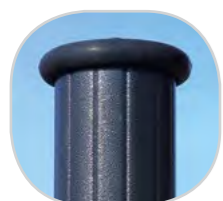


Range:	Traditional
Ages:	2+ yrs
Capacity:	7
Size:	W 6.36m D 1.22m H 2.63m
Free Height of Fall:	1.55m



[Click Here for more info...](#)

Shang Street, QLD



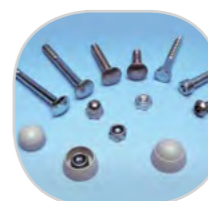
1 The 125mm diameter posts are made of lacquered galvanised steel. The two-tone grey graining finish has a slightly undulating surface for increased scratch resistance.



2 The pod is made from a single piece of rotary moulded polyethylene. It is fixed to a stainless steel frame that is fitted with buffers.

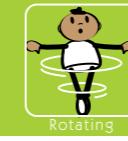


3 The horizontal beams of the swings are made of non-painted galvanised steel. The swing bearings are made of stainless steel.



4 The fixings are made of stainless steel and protected by anti-vandalism polyamide caps.

Tournicolo



J2401

Rotating equipment is ideal for children of all ages. Younger children gradually learn about the fun of speed on roundabouts. Then, as they gain self-assurance, the children can test their sense of balance and test their limits on equipment that combines rotation and swinging

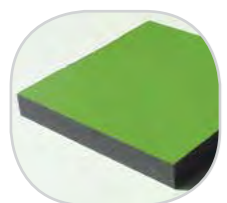


Range:	Rotating
Ages:	3+ yrs
Capacity:	6
Size:	W 1.20m D 1.20m H 0.95m
Free Height of Fall:	1.0m



[Click Here for more info...](#)

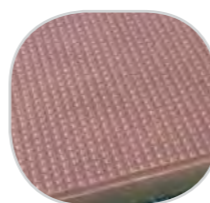
Cummins Reserve, SA



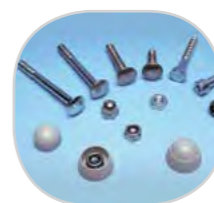
1 The coloured panels are made from a 13mm thick compact material (HPL). Robust in construction, it offers excellent resistance to weathering and vandalism.



2 The tubes, Ø 40mm, are made of stainless steel guaranteeing durability and reliability of the equipment. Injection moulded polyamide fixings connect the posts to the platforms and the various play features.



3 The platform is made from a 12.5mm thick, textured, non-slip compact material (HPL).



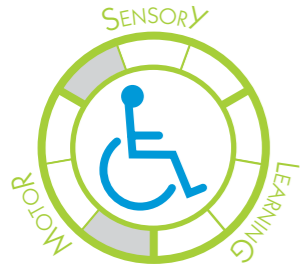
4 The stainless steel fixings are protected by polyamide anti-vandalism caps.

RodeoBoard

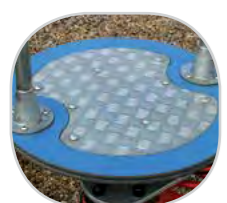
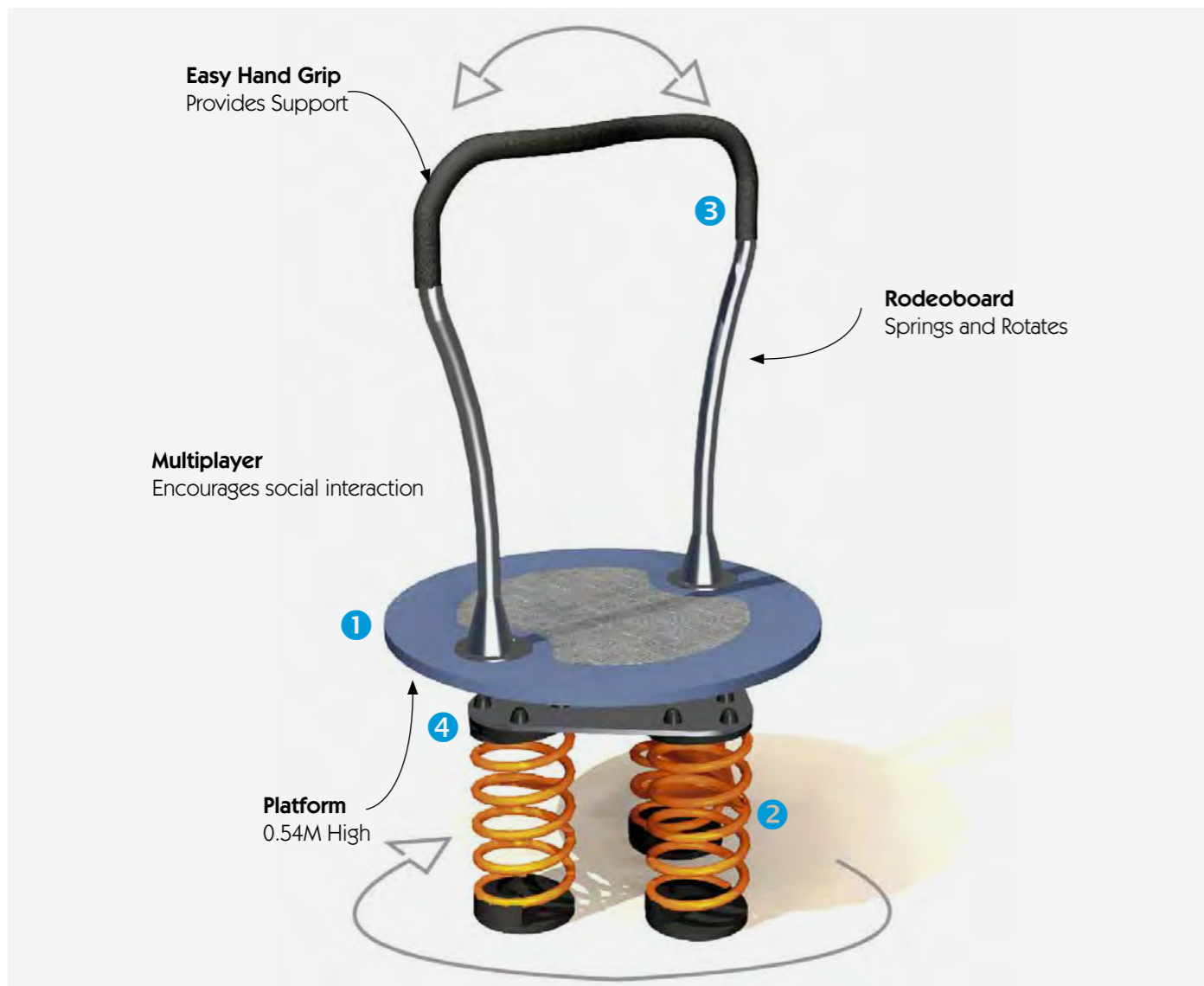


J3501

Rotating equipment is suitable for children of all ages. Younger children gradually learn about the fun of speed on roundabouts. As they gain self-confidence children can test their sense of balance and their limits on equipment that combines rotating and swinging.



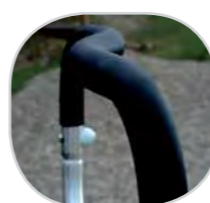
Range:	Rotating
Ages:	8+ yrs
Capacity:	4
Size:	W 0.84m D 0.84m H 1.50m
Free Height of Fall:	0.55m



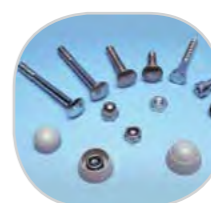
1 The rotating platform is made up of 2 HPL discs that give the equipment an extremely solid base. A non-slip channelled aluminium surface provides a good hold during rotation.



2 The oscillation system is based on the interaction of three highly resistant steel springs (35SCD6 grade steel) fitted with anti-trap retention components (patented by Proludic).



3 The grip section of the stainless steel handle is over moulded with rubber to give a good grip.



4 The stainless steel fixings are protected by polyamide anti-vandalism caps.

Sidney The Snake

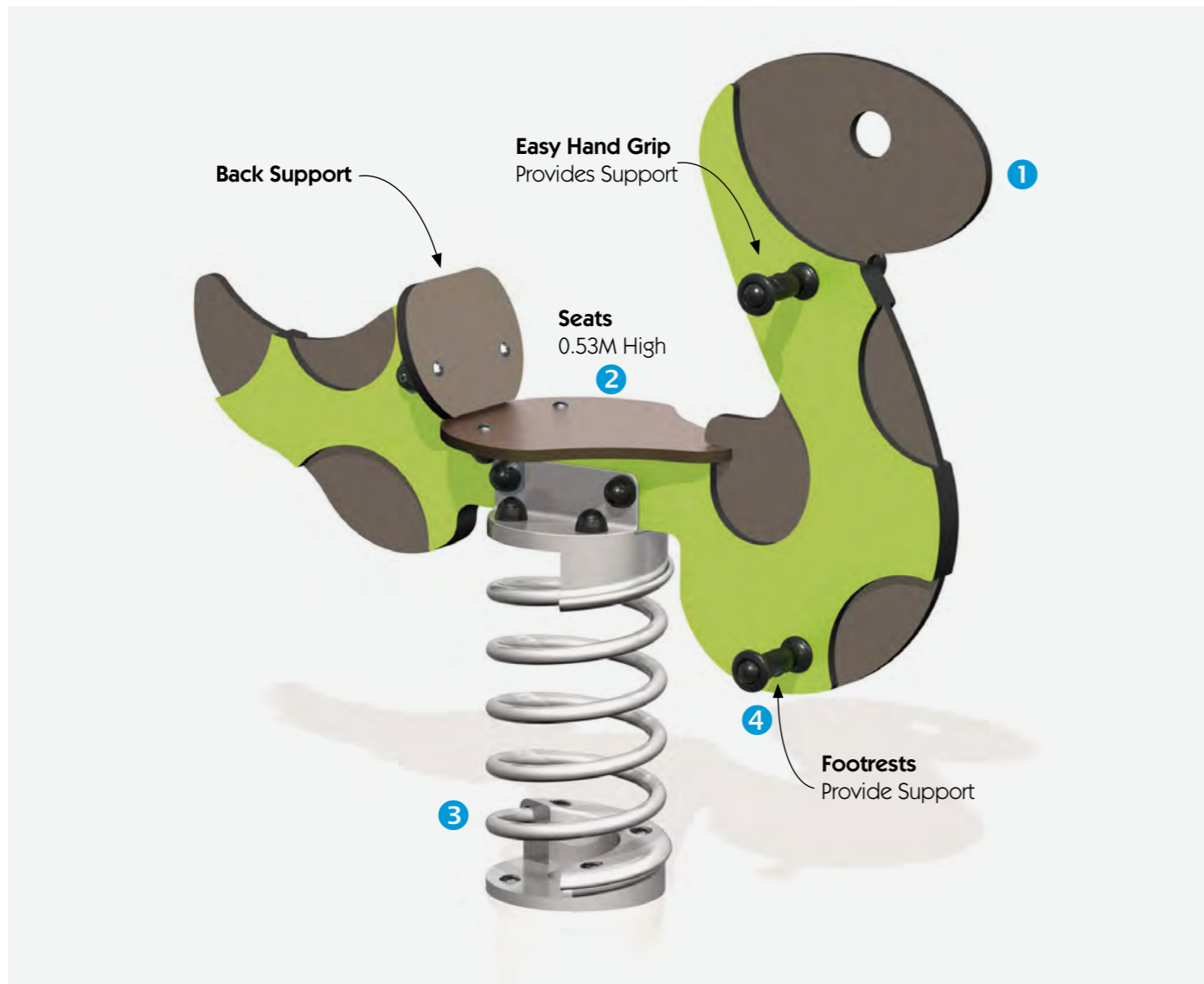


J820

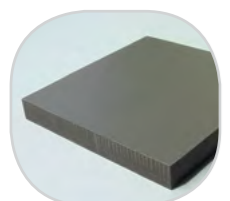
Springers are essential equipment in playgrounds designed for young children. They enhance a toddlers' sense of balance and help them to coordinate their movements. Each springer is ergonomically designed for maximum user comfort and safety. Their shapes are drawn from popular images that are familiar to children and designed to stimulate imaginations.



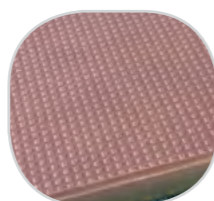
Range:	Moving
Ages:	2+ yrs
Capacity:	1
Size:	W 1.02m D 0.3m H 0.97m
Free Height of Fall:	0.53m



[Click Here for more info...](#)



1 The coloured panels are made from a 13mm thick compact material (HPL). Robust in construction, it offers excellent resistance to weathering and vandalism.



2 The seats are made with a compact material 13mm thick. It is made up of 70% of softwood fibres and 30% of thermosetting resin, and it stands up to weathering very well.



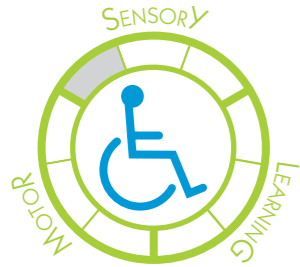
3 The springs are made from Grade 35SCD6 steel, shot blasted, stress relieved, zinc coated and finished with two coats of epoxy polyester powder.



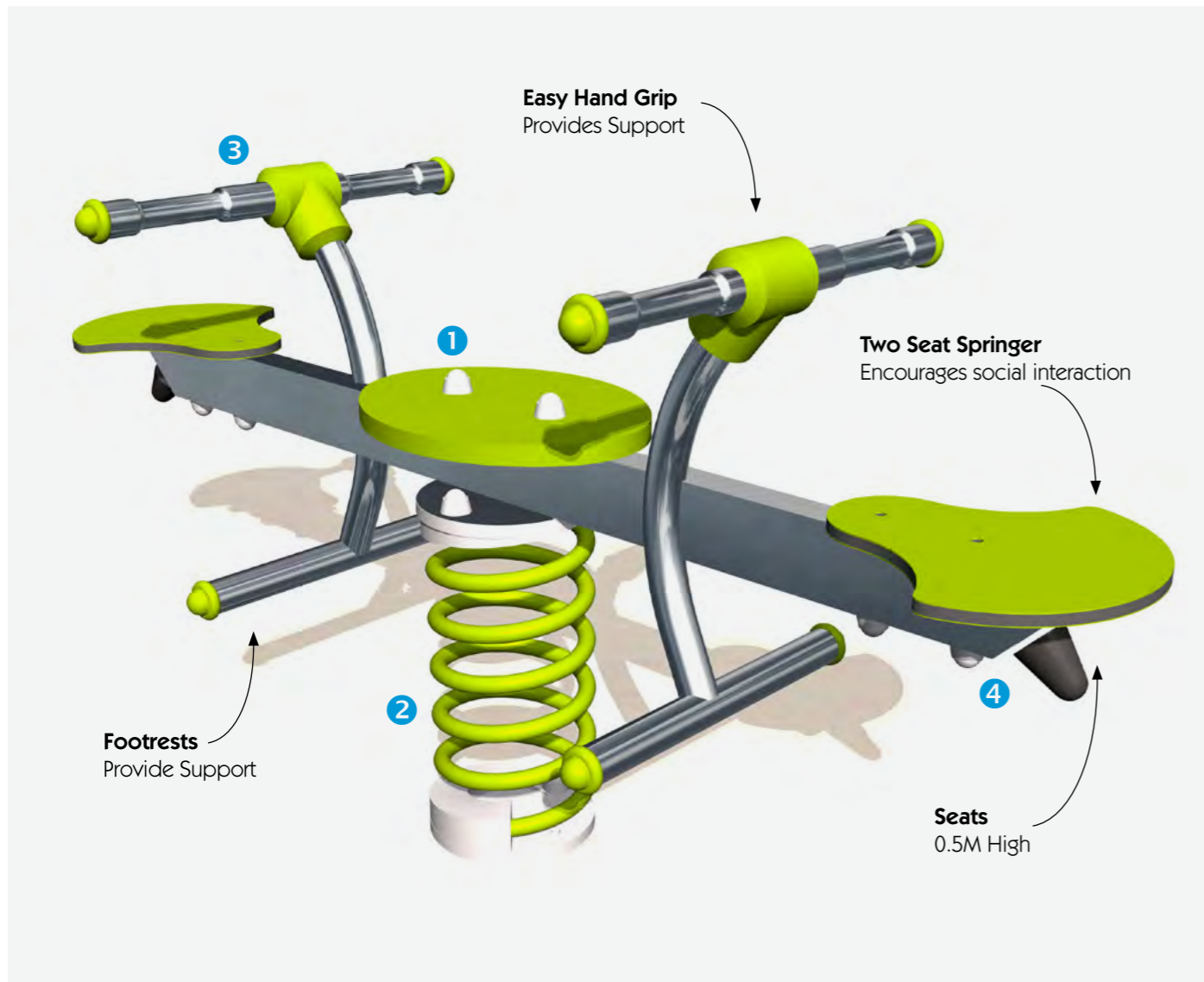
4 The handles and footrests are made of very strong polyamide plastic.



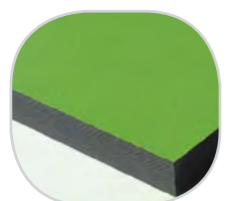
The joy of riding a springer is an essential childhood experience. Springers help children develop motor skills and the sense of balance. They are ergonomically designed for maximum comfort and safety with wide seat panels, handles and footrests. The Duo has room for several children to play together, encouraging social interaction and cooperation. The oscillating movement has a calming effect for children with autism.



Range:	Moving
Ages:	2+ yrs
Capacity:	2
Size:	W 1.48m D 0.43m H 0.73m
Free Height of Fall:	0.70m



[Click Here for more info...](#)



1 The coloured panels are made from a 13mm thick compact material (HPL). Robust in construction, it offers excellent resistance to weathering and vandalism.



2 The springs are made from Grade 35SCD6 steel, shot blasted, stress relieved, zinc coated and finished with two coats of epoxy polyester powder.



3 The tubes are made of stainless steel guaranteeing lasting durability and reliability of the equipment. The fixing are made from injection moulded polyamide.



4 The stainless steel fixings are protected by polyamide anti-vandalism caps.

Climbing Hut



J254

Playhouses provide wonderful places for young children to play and chat and are a welcome addition to any playground. Their detailed design means that they act as a stimulus for role play games as well as being an ideal place for children to take a break before launching into other activities. Outside or inside, on top or underneath, children can climb, take shelter, play alone or in a group. There are numerous possible play situations.

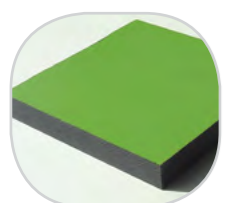


Range:	Traditional
Ages:	2+ yrs
Capacity:	14
Size:	W 2.12m D 1.10m H 1.48m
Free Height of Fall:	1.50m



[Click Here for more info...](#)

Dampier Town Centre, WA



1 The coloured panels and roof are made from a 13mm thick compact material (HPL). Robust in construction, it offers excellent resistance to weathering and vandalism.



2 The 68mm square posts are made of planks in solid wood.



3 The climbing holds are made of polypropylene. They are non-toxic, non-flammable and shock and UV resistant.



4 The tubes are made of galvanized steel, diameter 40mm, thickness 2mm, ensuring robustness and durability of the equipment.

The Adventure JEEP

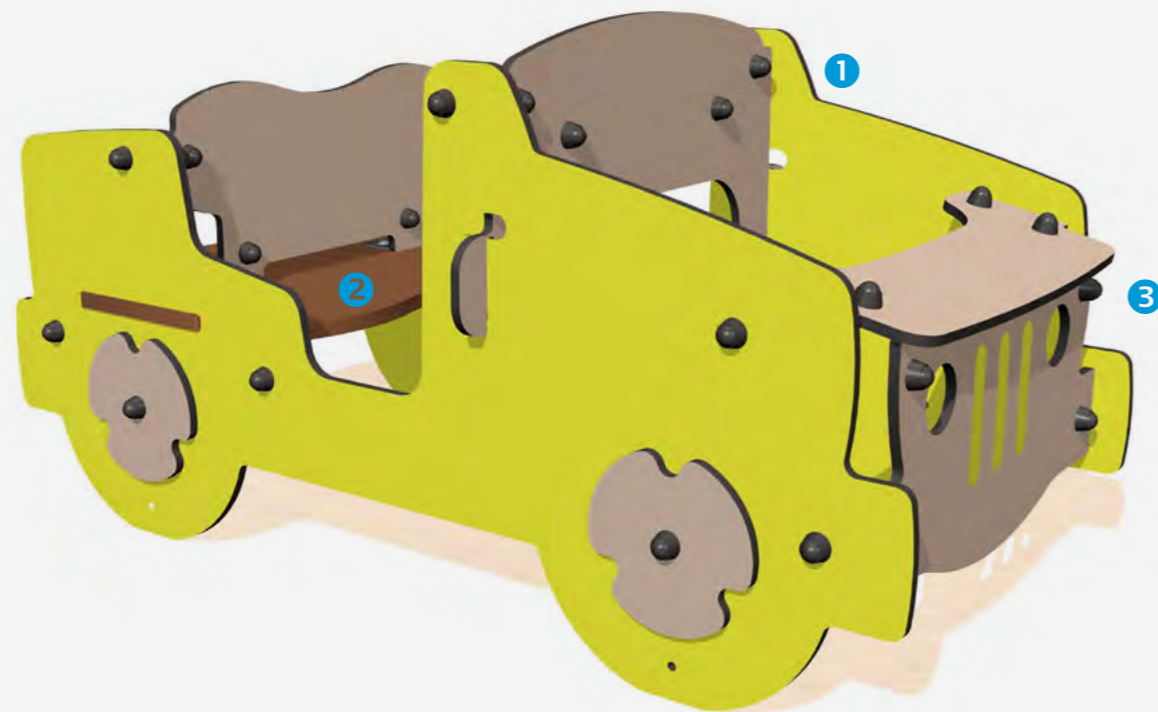


J2614

The Adventure themed equipment encourages imaginative play and transports children into the leafy undergrowth of a jungle environment. Aboard the jeep the young explorers can go in search of the secret temple! Supplied with two steering wheels and two seats there is room for all the members of an expedition to explore together. With room for older explorers to join in the fun – it's a great opportunity for inter generational play!

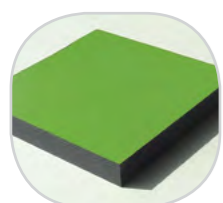


Range:	Themed Play
Ages:	2+ yrs
Capacity:	4
Size:	W 1.50m D 0.70m H 0.80m
Free Height of Fall:	0.35m

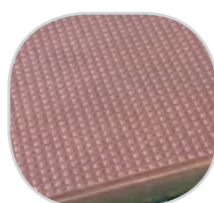


[Click Here for more info...](#)

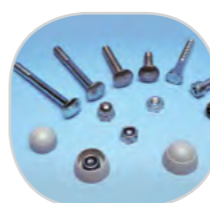
Bert Payne Playground , NSW



1 The coloured panels are made with a compact material 13mm thick. It withstands weathering very well. The coloured surfaces stand up well to UV radiation and resist damage.



2 The platforms are made from a 12.5mm thick, textured, non-slip compact material (HPL).



3 The stainless steel fixings are protected by polyamide anti-vandalism caps.

The RFDS Jet

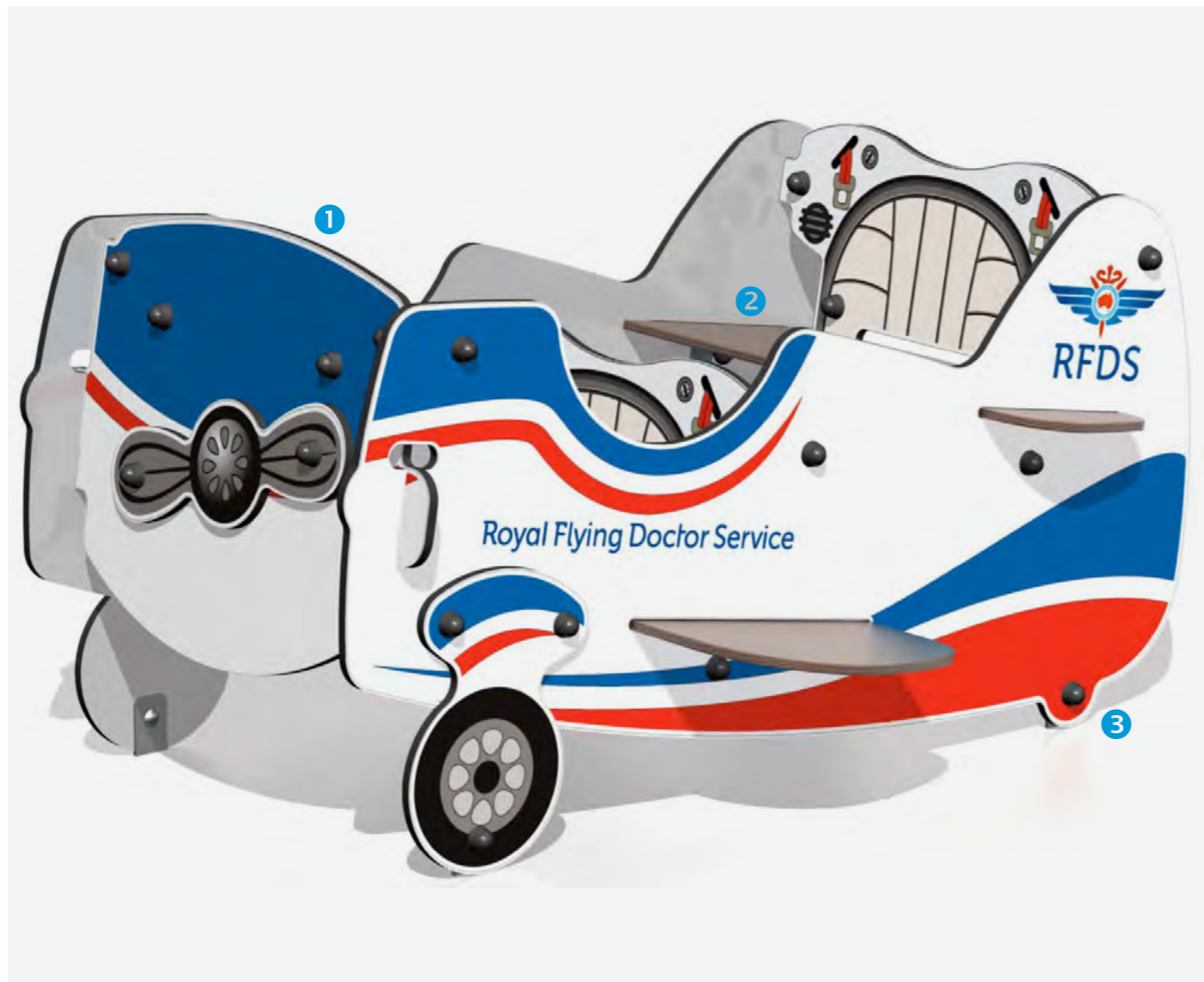


Z16-2612

The City theme takes children on a journey to an imaginary urban environment where they take on the role of a fireman, ambulance driver, postman, train driver, or even a passenger on an open-top bus. The products are packed full of play features that are ideal sources of inspiration for role-play games, as well as for the development of fine motor skills.

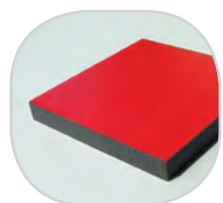


Range:	Multi-Play
Ages:	2+ yrs
Capacity:	6
Size:	W 1.4m D 1.23m H 0.72m
Free Height of Fall:	0.46m

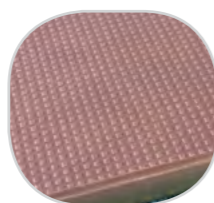


[Click Here for more info...](#)

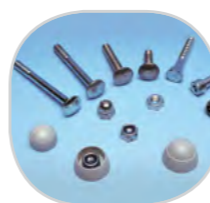
*Similar Unit Shown



1 The coloured panels are made from a 13mm thick compact material (HPL). Robust in construction, it offers excellent resistance to weathering and vandalism.



2 The platforms are made from a 12.5mm thick, textured, non-slip compact material (HPL).



3 The fixings are made of stainless steel and protected by anti-vandalism polyamide caps.

Four In A Row Play Panel

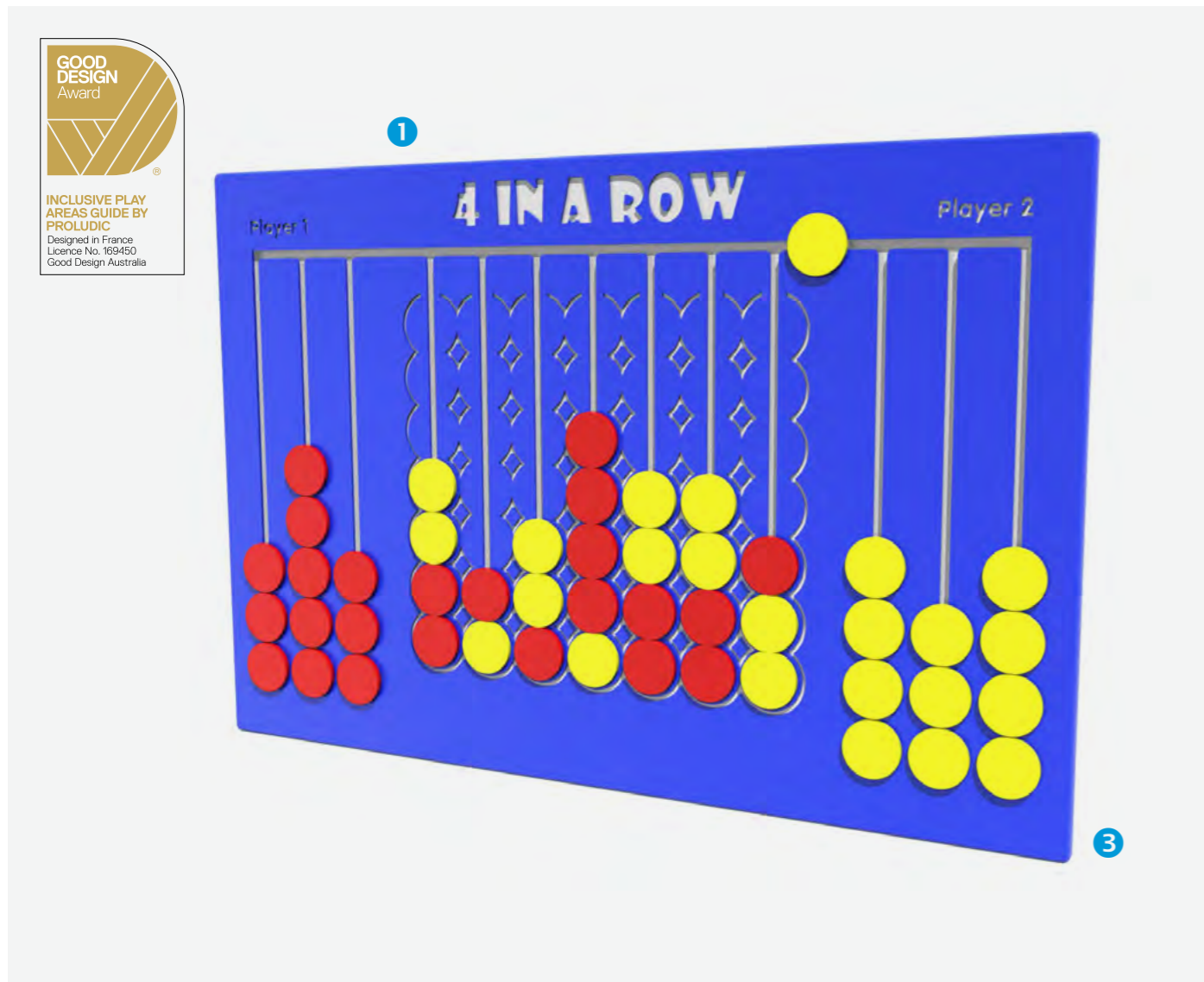


R34-FIROW3

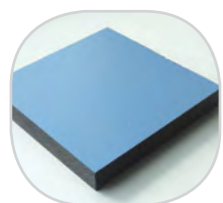
Play panels and interactive play experiences provide young children with yet another way of having fun, through a learning approach that enhances their ability to observe and concentrate. Many of the play panels include educational games with movable elements that children can learn from and also enjoy using.



Range:	Play Panels
Ages:	2+ yrs
Capacity:	2
Size:	W 1.20m D 0.03m H 0.80m
Free Height of Fall:	0m



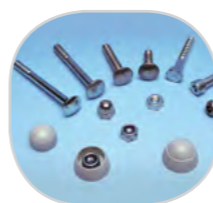
[Click Here for more info...](#)



1 The coloured panels are made with High Density Polyethylene (HDPE) with orange peel texture finish.



2 The 95mm square posts are made of painted steel, ensuring robustness and durability



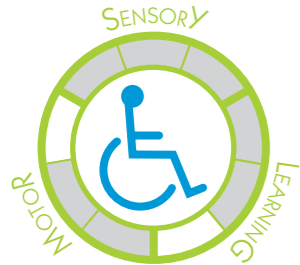
3 The stainless steel fixings are protected by polyamide anti-vandalism caps.

Rainbow Chimes



R34-FIECOCH

Play panels provide young children with yet another way of having fun, through a learning approach that enhances their ability to observe and concentrate. Many of the play panels include educational games with movable elements that children can learn from and also enjoy using.



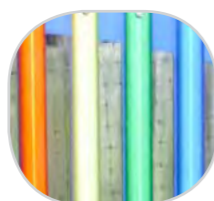
Range:	Play Panels
Ages:	4+yrs
Capacity:	2
Size:	W 0.90m D 0.20m H 1.4m
Free Height of Fall:	0m



[Click Here for more info...](#) Frank Beckman Playground, NSW



1 The posts are 120 mm in diameter made from 100% recycled material, with a heavy textured finish.



2 Anodised aluminium chimes with a smooth finish are pentatonic notes C4 to C5 with a medium alto pitch.



3 The beaters are fully moulded from polyurethane which adds strength.



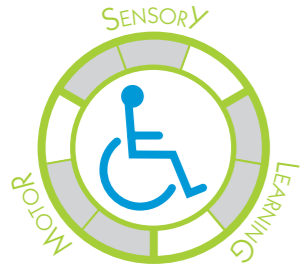
4 All fixings are made from stainless steel.

Tubophone



J3410

Play panels and interactive play experiences provide young children with yet another way of having fun, through a learning approach that enhances their ability to observe and concentrate. Many of the play panels include educational games with movable elements that children can learn from and also enjoy using.

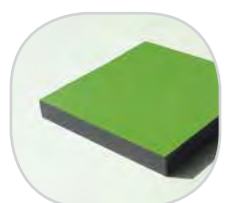


Range:	Play Panels
Ages:	2+ yrs
Capacity:	2
Size:	W 0.20m D 0.50m H 1.15m
Free Height of Fall:	0m



[Click Here for more info...](#)

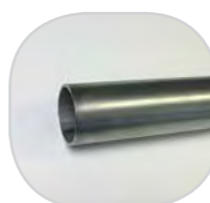
Waverley Park, VIC



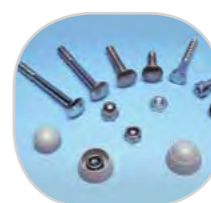
1 The coloured panels are made with a compact material 13mm thick. It is made up of 70% of softwood fibres and 30% of thermosetting resin, and it stands up to weathering very well (sun, rain, damp, etc.).



2 Galvanised, painted steel posts 95x95mm, guarantee long term durability.



3 The tubes are made of stainless steel, diameter 40mm, guaranteeing lasting durability and reliability of the equipment.



4 The fixings are made of stainless or plated steel and protected by anti-vandal polyamide caps.