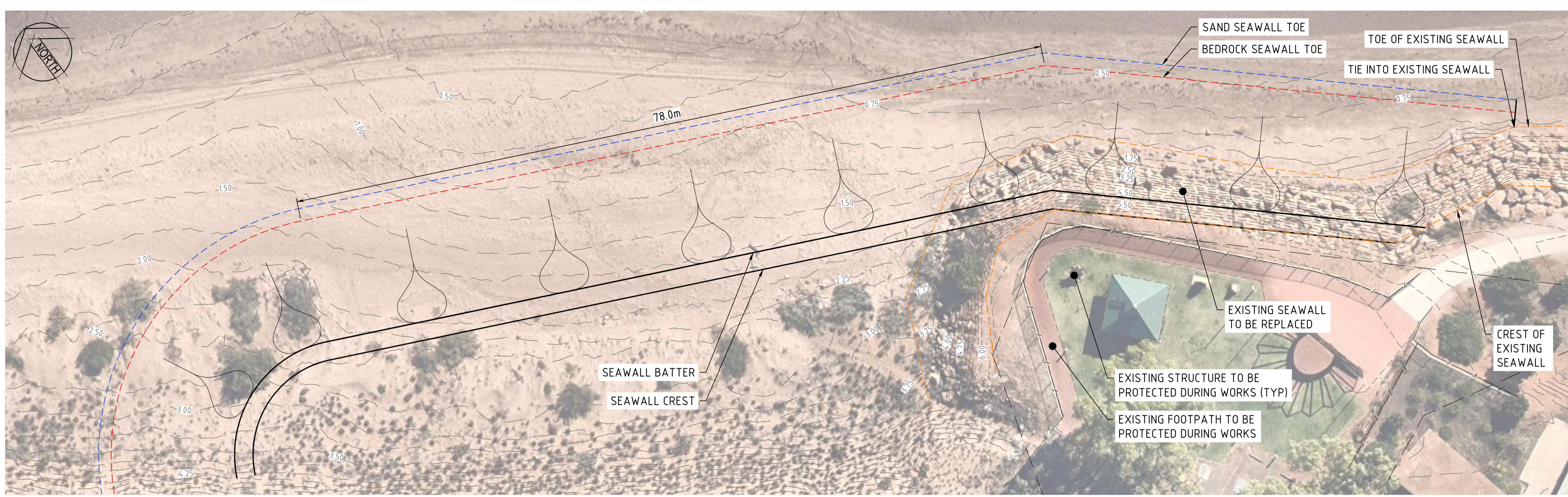


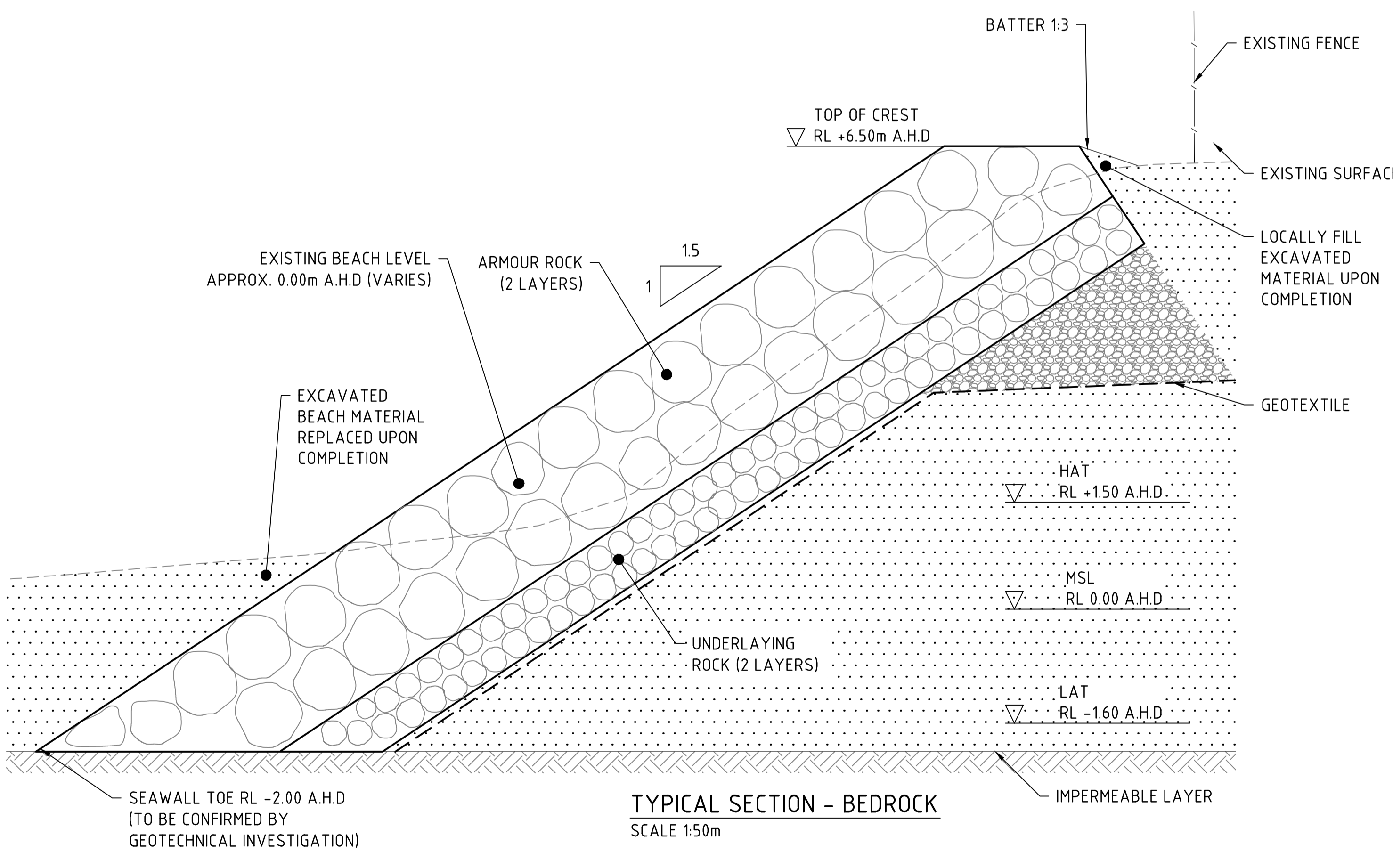
DATE PLOTTED: 10 February 2021 4:16 PM BY: ASHLEY PEARCE



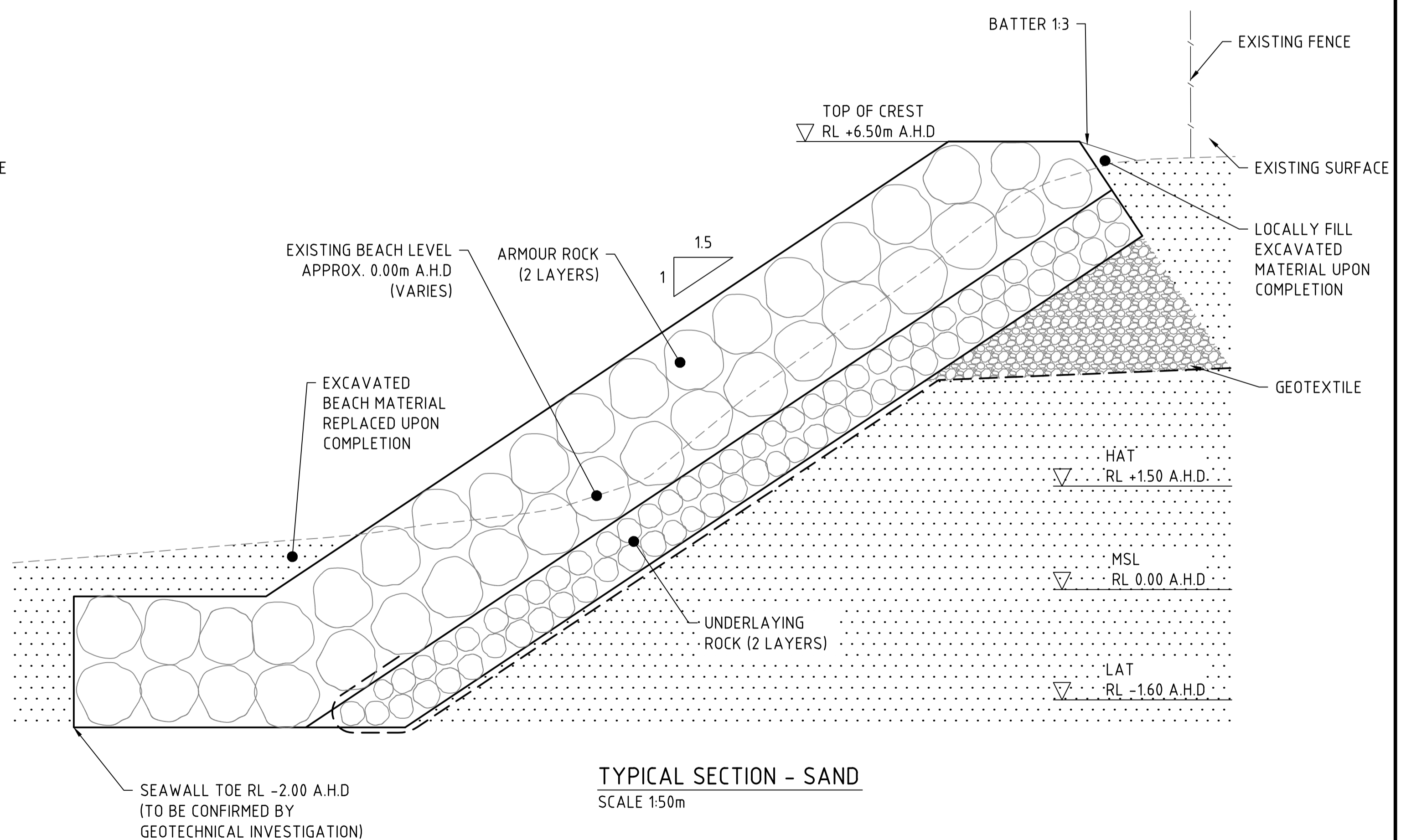
**LEGEND**

- EXISTING CONTOUR (FEATURE SURVEY - INTERVAL 0.25m)
- EXISTING CONTOUR (LIDAR - INTERVAL 0.25m)
- PROPOSED SEAWALL
- EXISTING FENCE
- EXISTING SURVEY FEATURE
- EXISTING SEAWALL ALIGNMENT
- CADASTRAL

**GENERAL ARRANGMENT PLAN - OPTION 2**  
SCALE 1:250m

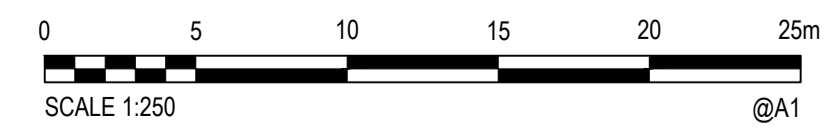
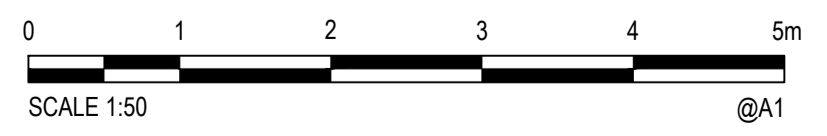


**TYPICAL SECTION - BEDROCK**  
SCALE 1:50m



**TYPICAL SECTION - SAND**  
SCALE 1:50m

ROCK WEIGHT AND SIZE BASED ON  
LIMESTONE WITH A DENSITY  $\rho = 2100\text{kg/m}^3$   
GRANITE WITH A DENSITY  $\rho = 2600\text{kg/m}^3$



© Cardno Limited All Rights Reserved.  
This document is produced by Cardno Limited solely for the benefit of and use by the client in accordance with the terms of the retainer. Cardno Limited does not and shall not assume any responsibility or liability whatsoever to any third party arising out of any use or reliance by third party on the content of this document.

Cardno (WA) Pty Ltd | ABN 77 009 119 000  
11 Harvest Terrace  
West Perth WA 6005  
Tel: 08 9273 3888 Fax: 08 9486 8664  
Web: www.cardno.com.au

<b>SHIRE OF ASHBURTON</b>			
GENERAL ARRANGMENT PLAN			
OPTION 2			
Datum	Date	Scale	Size
A.H.D.	09.02.2021	AS SHOWN	A1
Drawing Number			Revision
CW1055700-SKE-002			A

XREFS: X:Survey; X:Base; X:Contours; X:E-Contours; Lidar; CAD File: laupercs02\IPTB\Projects\CW1055700\_Shire of Ashburton Stormwater Modelling\_a\_Mitigation\_Plans5\_Technical\Civil\CAD\CW1055700-SKE-001.dwg