

# Turtle Watching Code of Conduct

## 2 DIGGING BODY PIT

Lots of sand flicked into the air using front flippers only. Turtle may move and repeat this process until finding the correct spot. Estimated time 20-40mins

## 3 EXCAVATING EGG CHAMBER

Sand stops being flicked as turtle scoops out egg chamber with rear flippers only. Rocking motion side to side. Estimated time 10-20mins

## 4 LAYING EGGS

Turtle remains very still, with a gentle heaving motion. If her flippers are moving and sand is being flicked she is NOT laying yet. Estimated time 3-10mins

## 5 COVERING NEST

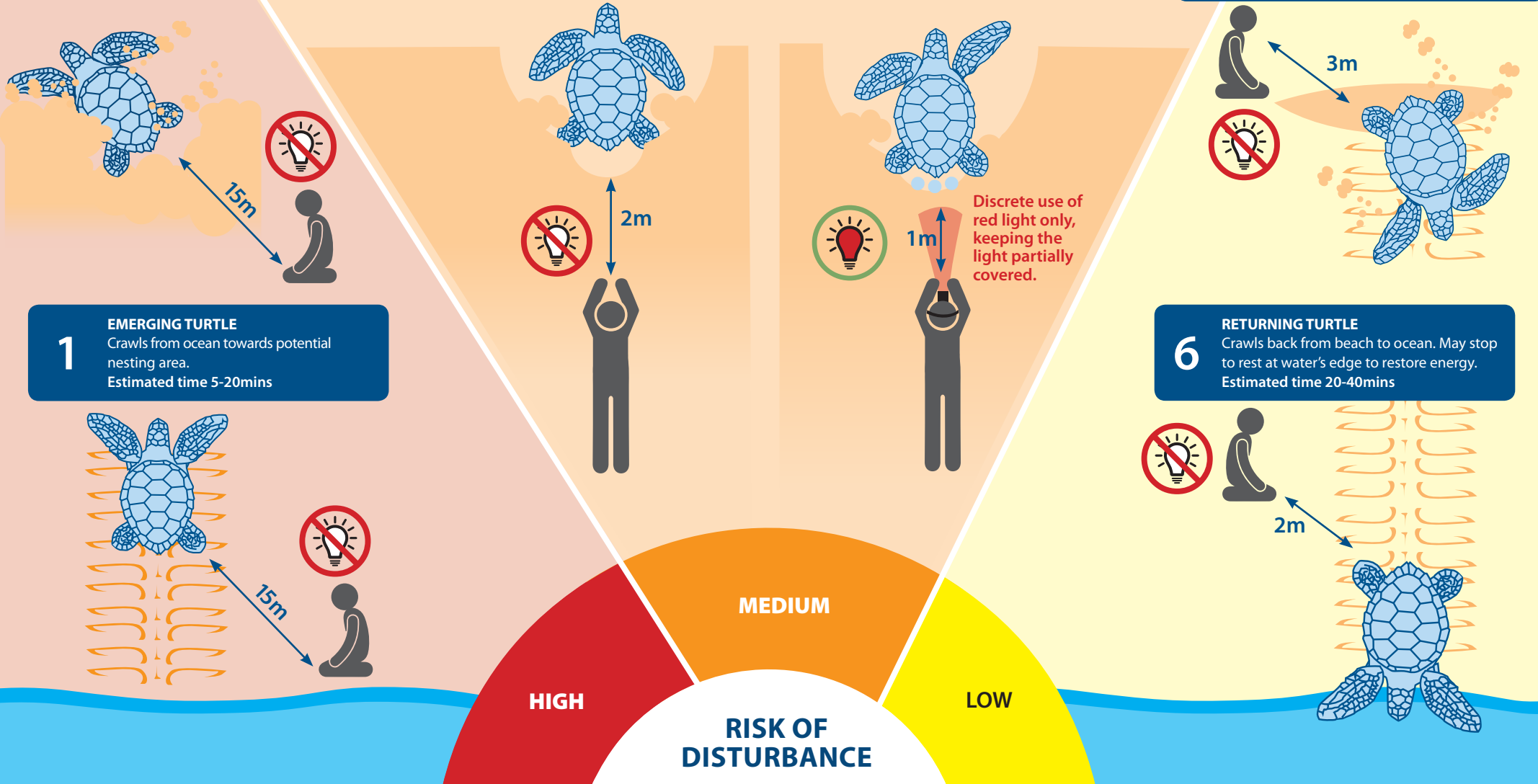
Turtle covers egg chamber with sand using rear flippers then gradually moves forward, camouflaging nest, flicking lots of sand into air. Estimated time 20-40mins

## 1 EMERGING TURTLE

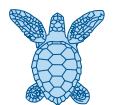
Crawls from ocean towards potential nesting area. Estimated time 5-20mins

## 6 RETURNING TURTLE

Crawls back from beach to ocean. May stop to rest at water's edge to restore energy. Estimated time 20-40mins



**RISK OF DISTURBANCE**



**NO GLOW:** turtles are easily disturbed by lights, use the moon to light your way.  
**MOVE SLOW:** at all times to avoid disturbing turtles, walk along the water's edge and slowly follow an emerging track.  
**STAY LOW:** out of sight of nesting turtles - sit, crouch or lie in the sand.



**No flash photography at any time**