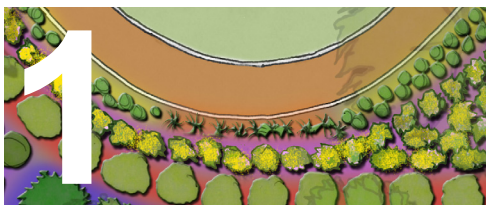
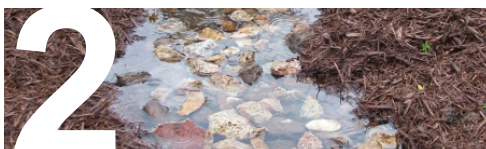


top ten waterwise garden tips



1 hydrozone your garden

- "Hydrozoning" involves grouping plants with similar water needs together in an effort to be more water efficient in your garden.
- These zones inform your irrigation design as different irrigation stations require different watering requirements, for example garden beds should be separated from turf.
- Hydrozoning is one of the most important tools to conserve water in the garden.



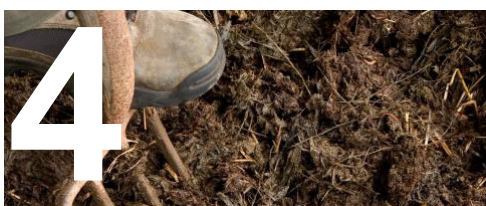
2 use of informal swales

- Consider appropriate grading to create micro swales and basins within the garden beds. These help to collect rain water which infiltrates into the soil profile to recharge the underground aquifer, retain soil moisture and reduce run off.



3 choose waterwise plants

- Regional native plants should be considered in your garden as they are perfectly adapted to the harsh north west climate and require less water.
- Front gardens and verges are great places to establish native gardens. Ground covers and low grasses can be incorporated without limiting active, usable lawn areas in the back yard.
- Go to the Water Corporation website for suitable waterwise plants for the Pilbara area.



4 apply a soil improver with a soil wetting agent

- Organic matter like soil conditioners, compost and minerals as well as soil wetting agents are vital in helping improve soil quality and overall plant growth.
- Organic soil conditioner should be mixed with existing soil and backfilled around the plant's root ball.
- Onslow soils are generally deficient in nitrogen and soil microbes. Using liquid fish emulsions can help overcome these issues in the garden.
- Soil wetting agents should be applied at the start of the wet season.



5 waterwise mulch

- Maintain a 5-10cm layer of organic mulch around your planting beds.
- Organic mulch helps improve moisture retention and reduces evaporation, thus reducing the amount of water you require to put on your garden.
- Avoid gravel mulch as it retains heat and can be detrimental to plant health.
- Coarse organic mulch is best because it allows rain and air to pass through and doesn't tend to blow away.



6 submulch drip irrigation

- Drip irrigation is the best option for water efficient irrigation. It applies water directly to the root zone, avoiding overspray, evaporation and wind drift.
- Consult a certified irrigation professional to assist with the design and installation of your irrigation system.
- Evapo-transpiration or rain sensors should be installed to help prevent unnecessary irrigation in the event of mild weather or rain events.



7 install a greywater system

- Where available, recycled water or greywater should be considered for irrigation as an alternate to mains water.
- Refer to the Health Department website for approved systems in Western Australia www.public.health.wa.gov.au, or contact the Shire of Ashburton Environmental Health Office for more information.



8 only water once on your rostered watering day

- Alternate watering day rosters have been put in place by the Water Corporation for the Pilbara.
- Exemptions can be obtained for the purpose of establishing a new garden.
- Refer to the Water Corporation Website for further information: www.watercorporation.com.au



9 use a trigger nozzle on your hose

- Use a trigger nozzle or a watering can to minimise water wastage. Avoid using a hose to wash down hard surfaces, such as your patio or driveway, use a broom instead to save buckets of water.

10



use products displaying the Waterwise Approved and Smart Approved WaterMark Symbols.

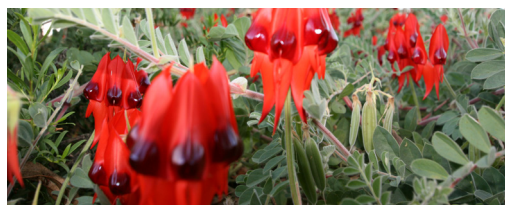
Proudly supported by Water Corporation




JOSH BYRNE
& ASSOCIATES


shire of Ashburton
reef to range

for waterwise plants...



Nursery - Kimberley Environmental Horticulture Incorporated

Main contact: Tom Harley
Mobile: 0439 511 985
Location: Broome
Email: kimenvhort@yahoo.com.au
Website: <https://northwestplants.net/>

They supply regionally local native plants and some native trees. There will be a delivery charge as they are based in Broome.

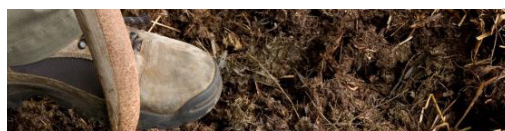


for waterwise soils and mulches...



You can **ORDER** the following gardening products:

- Eco Growth fertilisers www.ecogrowth.com.au
- Liquid fish emulsion
- Bagged mulch
- Organic fertilisers



Onslow Hardware Store

Phone no.: (08) 9184 6237

for waterwise irrigation supplies...



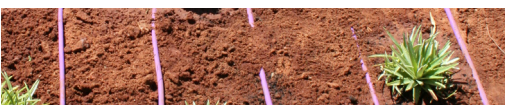
You can **ORDER** the following irrigation products:

- All drip irrigation components
- Irrigation controllers, filters, valves



Onslow Hardware Store

Phone no.: (08) 9184 6237



For more information on drip irrigation visit:

www.netafim.com.au



Proudly supported by Water Corporation




JOSH BYRNE
& ASSOCIATES


shire of Ashburton
reef to range