



Shire celebrates opening of Tom Price Child Care and Emergency Services Precinct



In November, the Shire of Ashburton formally acknowledged the completion of both the Emergency Services Precinct and the new Childcare Centre in Tom Price.

The Shire was joined by Hon Peter Foster MLC representing Minister for Local Government and Minister for

Emergency Services, Craig Waters, Deputy Commissioner Fire and Emergency Services and Richard Cohen, Managing Director Port, Rail and Core Services Rio Tinto at ceremony to acknowledge the realisation of both projects.

*Read more
on Page 3*

Introduction

2022 has been a great success in the Shire of Ashburton. As we celebrated 50 years of the Shire boundary we know today, we continued to go from strength to strength in the delivery of services, projects, and events across the four towns of Tom Price, Onslow, Pannawonica and Paraburdoo.

In This Issue

Water Tank Mural Project	2
Childcare Centre	3
Golden Jubilee celebrations	5
Visit Ashburton awarded bronze	8
The year that was – 2022	10
Gold Waterwise Status	12
Countdown to the eclipse	14
Onslow Keepers	16
Tom Price Pump Track	18

Shire of Ashburton celebrates completion of Onslow Water Tank Mural Project



In October, the Shire hosted stakeholders and invited guests at an official opening event of the Water Tank Mural Project at Onslow Airport to celebrate its completion.

WA artist Jerome Davenport completed the mural project on behalf of the Shire.

Shire President Kerry White said she was happy with the completion of the project and how the tanks work to reflect the Onslow community.

"I am incredibly proud of the outcome achieved on our water tanks and commend and acknowledge the efforts of all involved in this project.

"The project was initiated by Council's vision to showcase what makes Onslow such a unique place to live", acknowledged Councillor White.

"Our intention for the mural was to involve themes of Onslow's community, history and a reflection of its past to modern day, that considers our indigenous heritage, pearling and agriculture industries, and the stories that make Onslow the authentic coastal town it is today.

"Jerome was selected to complete the Onslow Water Tank Mural Project based on his interpretation of our vision, drawing inspiration from the natural balance between beauty and decay, and way of interpreting Onslow's history and those moments in time that we wanted to forever capture.

"With Onslow's extensive history, the water tank murals will highlight to existing and new members of our community, visitors, and travellers, the different facets of the region that make the town what it is today.

"I would like to acknowledge all involved in bringing this project to fruition, my fellow Councillors, Shire officers, Water Corporation, Regional Arts WA, Element Advisory and the Community Artwork Reference working Group for their contributions, time and vision that facilitated the process and delivered a highly successful outcome.

"We are all so proud of what has been achieved."

Water Corporation's North-West Regional Manager, Sharon Broad said that the completion of the Onslow Water Tank Murals was a milestone in Water Corporation's relationship with the Shire of Ashburton and the Onslow community and it all started seven years ago with an idea to transform the local water tanks into incredible works of art, adding to the rich Pilbara landscape of the region

"The tanks have always remained a prominent feature in Onslow, and we're delighted to have supported the Shire's vision to transform these into beautiful works of art that showcase the rich culture and unique identity of the Onslow community", acknowledge Ms Broad.

"I think everyone can agree that Jerome and the Artwork Selection Working Group have done an incredible job showcasing the things that make Onslow a special place to live, work and visit."

To see more of the tanks, follow the Shire of Ashburton (@ShireofAshburton) on Facebook, Instagram and YouTube.

This activity meets Strategic Objectives 2 and 3 of the Strategic Community Plan - Place and Prosperity



Onslow to benefit from \$4.4 million connectivity upgrade

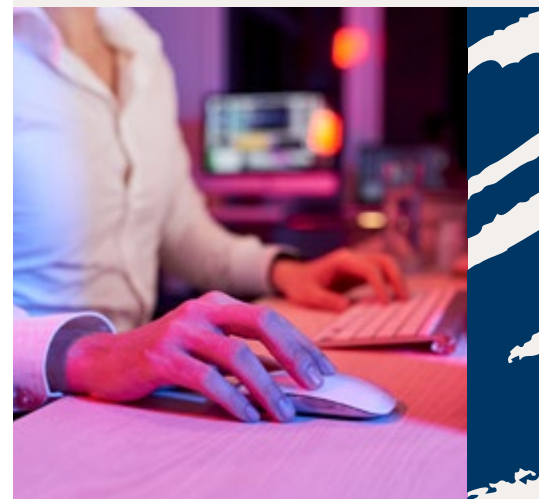
In May, the Shire of Ashburton welcomed the confirmation of \$4,478,161 from the Federal Government's Regional Connectivity Program.

The successful application will see the current nbn service in Onslow upgraded to Fibre to the Premise technology.

This means both residents and local businesses will have access to faster speeds and improved user experiences for downloads, streaming, video conferencing and cloud-based technologies.

Council's current priorities for Onslow include resource development and expansion, tourism and cultural infrastructure, heavy industry development and a new business precinct, all of which will require improved internet and connectivity to be achieved.

This activity meets Strategic Objective 3 of the Strategic Community Plan - Prosperity





*Continued
from Page 1*

Shire of Ashburton President Kerry White praised the achievement and the completion of both much needed facilities to the Tom Price community.

"The Shire of Ashburton, in partnership with

Rio Tinto as part of our Community Infrastructure and Services Partnership, has been working for a number of years to deliver a childcare centre that will meet the needs of current and future residents", acknowledged Councillor White.

"The \$6.75M modern facility offers 96-spaces through the provision of day-care, after school care and vacation programs in a purpose-built environment that will foster learning and creativity.

"We know that this facility will greatly enhance the liveability of our town as well as assisting working parents with childcare needs.

"I would like to acknowledge Rio Tinto for their funding contribution to the project and continued investment into the community.

"I also would like to acknowledge The Nintirri Centre Inc., who will be operating the new centre from early next year and thank them for their continued contribution to the Tom Price community.

"We also officially opened the \$4M Emergency Services Precinct today, with representatives from DFES and local emergency services groups and volunteers in attendance alongside Shire officers and Rio Tinto.

"The combined, fit-for-purpose facility will house the Bush Fire Brigade (BRB) and State Emergency Services (SES) in one accessible location.

"With our Pilbara climate, prone to cyclones, floodwaters and bushfires, and proximity to Karijini National Park that sees close to 500,000 visitors a year in our region, the BFB and SES now have an accessible base to coordinate emergency and incidence response, training and other community activities.

"I am very pleased that together with funding contributions from DFES and Rio Tinto, along with a contribution from the Shire of Ashburton we have delivered these valuable amenities to the community".

Rio Tinto's Managing Director Port, Rail & Core Services, Richard Cohen, said: "Rio Tinto is proud to have helped deliver this state-of-the-art precinct, which will offer two vital services for Tom Price to support a healthy, vibrant, and thriving local community".

"Early childhood education is a critical service, and this new centre will help attract and retain families, while the new emergency services facility will provide a boost to those who work tirelessly to protect Tom Price and surrounding areas."

"DFES is pleased with the addition of this facility which will significantly improve the delivery of emergency service to the Tom Price area and the greater Pilbara region," DFES Superintendent Pilbara Peter McCarthy said.

"Co-location of the Tom Price Bush Fire Brigade (BFB) and State Emergency Service Unit (SES) in the one facility will enhance an already strong working bond between the two volunteer services.

"The state-of-the art operational, training, vehicle and equipment storage and amenity areas provide our volunteers the space and functionality to prepare for, respond to and assist recovery from a range of emergency situations."

This activity meets Strategic Objectives
1, 2 and 3 of the Strategic Community
Plan - People, Place and Prosperity



Former councillors thanked for contributions to the Shire



During 2022 council meetings, the Shire of Ashburton has recognised the service of former Councillors Doug Diver and Ivan Dias.

Cr Diver was presented with a plaque to commemorate his time and commitment to council from 2016-2021 and his support as Deputy President from 2019-2021.

Cr Dias was presented with a plaque to commemorate his 14 years of commitment to council as a representative for the Paraburdoo ward.

Council thanks both Cr Diver and Cr Dias for their contributions to the Shire of Ashburton and service to the community.

Pictured: Shire of Ashburton President Kerry White with former Councillor Ivan Dias and former councillor Doug Diver.

This activity meets Strategic Objective 4 of the Strategic Community Plan - Performance



Council endorses 2022 Priority Projects advocacy statement

Shire of Ashburton Council endorsed the Shire's Priority Projects for 2022, detailing key advocacy projects Council is committed to focusing on for the next five years.



The 2022 Priority Projects is a visionary statement but one that also enables the Shire to lobby for additional funding from Federal and State Government and from community and industry stakeholders.

As the Shire of Ashburton continues to be a driving force of the Pilbara region and the Western Australian economy, the document also raises awareness of critical issues for the Shire and development opportunities in Onslow, Tom Price and Paraburdoo.

The Shire of Ashburton 2022 Priority Projects is available via www.ashburton.wa.gov.au

This activity meets Strategic Objective 3 of the Strategic Community Plan - Prosperity



Shire welcomes Federal Member for Durack Melissa Price

In May, the Shire of Ashburton hosted Minister for Defence Industry, Science and Technology and Federal Member for Durack Melissa Price MP.

Ms Price travelled to Tom Price and met with Chief Executive Officer Kenn Donohoe and Deputy Shire President Matthew Lynch to discuss current projects across Ashburton, including a \$5 million dollar grant aimed at building natural disaster reliance.

The Shire of Ashburton will be using the grant to extend the Onslow seawall and shield the town from rising sea levels and increasing cyclone activity.



Pictured: Deputy Shire President Matthew Lynch and Hon Melissa Price MP at Tom Price Skate Park, which is undergoing a staged upgrade partially funded by the Federal Government's Building Better Regions Funding program.

This activity meets Strategic Objective 3 of the Strategic Community Plan - Prosperity



Developing the future

In June, Shire of Ashburton Deputy President Matthew Lynch met with Hon Neil Thomson MLC Shadow Minister for Planning; Lands; Heritage and Dr David Honey MLA to discuss strategic opportunities and visionary projects within the Shire.

Conversations also included the discussion of issues faced by Council for future development of our regional towns and community.

This activity meets Strategic Objective 3 of the Strategic Community Plan - Prosperity



Golden Jubilee celebrations in paradise!

In May, the Shire of Ashburton celebrated 50 years of the local government boundary we know today.

In 1972, the Shire of West Pilbara was formed as a result of the amalgamation of the Shires of Tableland and Ashburton.

To mark the occasion, celebrations were held in Tom Price and Onslow over two huge weekends in June.

On 11 June, we invited Cold Chisel legend Ian Moss to perform at an anniversary concert in Tom Price, supported by Black Sorrows Trio, Coolibah Collective and Tre Amici. The concert, including carnival rides and food trucks for the community to enjoy was a great way to kick off celebrations.

On 18 June, residents in Onslow celebrated 50 years with a family fun day and anniversary concert in the evening headlined by Australian rock favourite, The Choirboys. Supported by Corey Colum and The Midnight Jokers, residents danced the night away!

On August 19, the community of Pannawonica attended a cocktail jubilee under the stars to celebrate 50 years of Pannawonica. The highlight of the event was the unveiling of the 50th Anniversary Celebration Murals.

On October 15, a celebratory Sundowner event took place in Paraburdoo with special guests Death By Denim and South Summit, mini golf, Vortex Gaming Perth, food trucks and more!

All four events provided a great opportunity for our community to come together and celebrate our collective achievements over the last 50 years.

Thank you to everyone who helped make both events as we celebrated our Golden Jubilee.

This activity meets Strategic Objectives 2 and 3 of the Strategic Community Plan - People and Prosperity



Organisational Development update

In 2022, the Shire of Ashburton Organisational Development Team has both implemented and commenced a number of programs aimed at encouraging engagement, effective communication, and health and wellbeing.

Key achievements in the first half of 2022 include:

- Mental Health First Aider course undertaken in Onslow, resulting in Qualified Mental Health First Aiders located across major Shire locations
- A focus on health and wellbeing in the Shire including skin checks and flu vaccinations, workplace safety training, and inclusive culture and mental health webinars
- Formal training calendar and leadership programs in place for all staff
- Streamlined recruitment and onboarding processes
- Transition to an online annual performance review process, learning portal and contemporary onboarding program for new employees

- Our new enterprise agreement received approval from Fair Work Commission, without any undertakings
- Engaging a WorkSafe accredited Safety Inspector to perform a desktop audit across multiple Shire locations
- We appointed Safety Representatives and established a formal WHS Committee and introduced a revised, Council approved WHS Policy, aligned with the new Work Health and Safety Act 2020

The team also achieved 100% completion and compliance of the annual performance review process by having goals and a development plan for every employee at the Shire and established an onboarding working group to enhance our employee experience.

These programs and initiatives will continue to be implemented across 2022, promoting open dialogue and employee welfare across the Shire.

This activity meets Strategic Objective 4 of the Strategic Community Plan - Performance



Tom Price Kennel refurbishments completed

In June, the Shire of Ashburton undertook the restoration of the Tom Price Kennels.

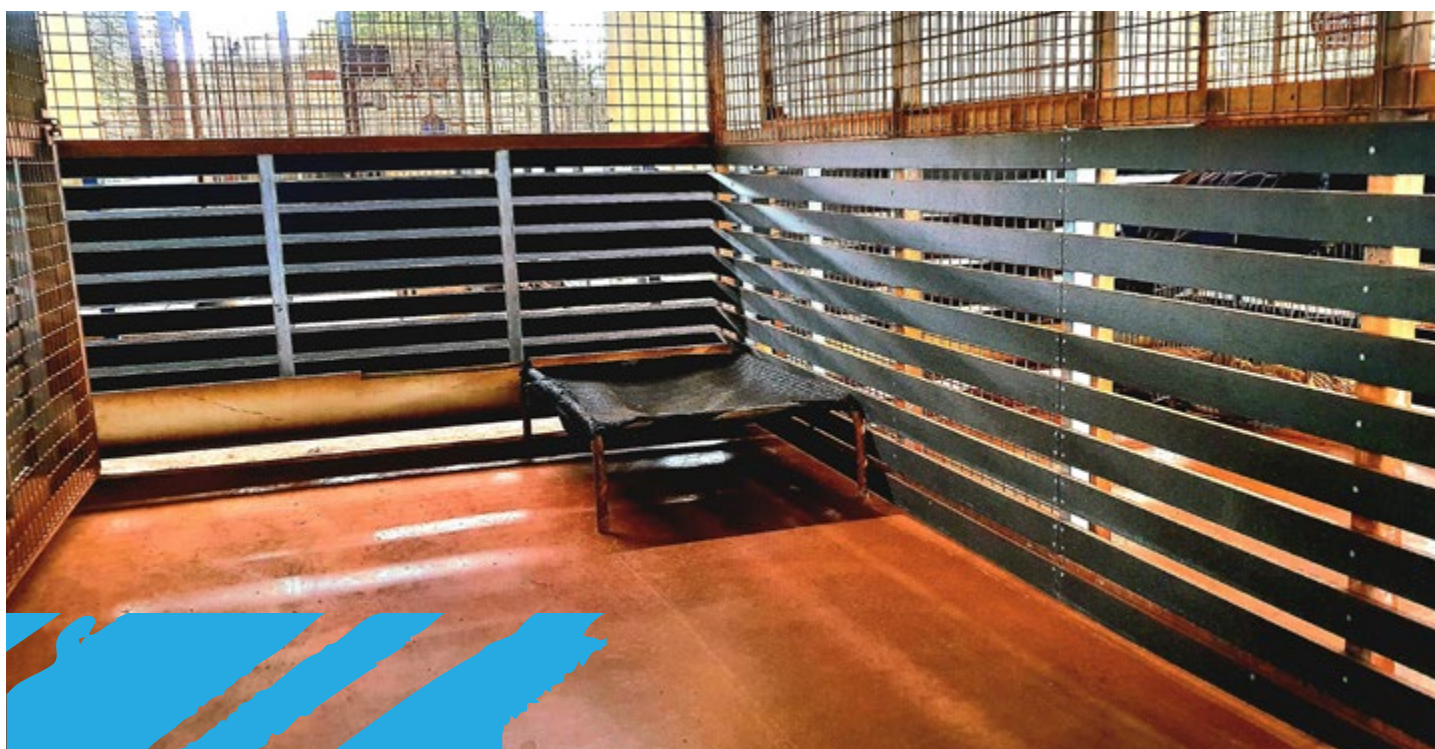
Renovations included the removal and mesh and colorbond, and an

overall refurbishment of the facility to ensure optimum safety for pets.

For boarding kennel enquiries and application forms please contact the Shire's office in Tom Price on

(08) 9188 4444 or visit the Shire of Ashburton website.

This activity meets Strategic Objective 2 of the Strategic Community Plan - Place



Bedford Firefighting Truck

restoration to commence

The Shire of Ashburton has acquired the services of Perth based company Premier Truck Painters to restore the Bedford Fire Fighting Truck that was stationed in the township of Wittenoom from the 1970s until 2000s.

The truck was previously stationed in Wittenoom and purchased by Council in 2021 to be restored. An important piece of both mining and the Shire's history in the area, the truck will permanently reside at the future Emergency Services Precinct in Tom Price, following restoration of the truck and the completion of the Combined Emergency Services Facility in Tom Price.

Currently, the chassis has been redone, with brakes to be rebuilt and the motor to be placed back into the vehicle.



Follow the Shire of Ashburton on Facebook and Instagram (@ShireofAshburton) to keep up with the restoration progress.

This activity meets Strategic Objective 2 of the Strategic Community Plan - Place



Outstanding community citizens recognised

Each year, as part of our Australia Day activities the Shire of Ashburton acknowledges and celebrates the contributions of people within the community.

The Community Citizen of the Year Awards reward and recognise individuals and organisations who have made a notable contribution during the year, and those who have given outstanding service over several years in each of our towns.

By recognising those who have made a significant contribution to our community, we hope to encourage continued active participation, and increased community sentiment and vibrancy across the Shire. Well done to all nominees and congratulations to our 2022 winners.

Onslow

Max Stewart – *Senior Citizen of the Year*
Rhian Hathaway – *Young Community Citizen of the Year*
Renae Coates – *Active Citizenship Award*

Pannawonica

Hayley Norris – *Community Citizen of the Year*

Tom Price

Te Wairua Taua – *Young Community Citizen of the Year*
Tom Price Emergency Services Cadet Corp – *Active Citizenship Award*
Jenny Ryle – *Community Citizen of the Year*

To nominate for the 2023 awards, visit citizenshipawards.com.au

This activity meets Strategic Objectives 1, 2 and 3 of the Strategic Community Plan - People, Place and Prosperity



Visit Ashburton awarded Bronze

The Shire of Ashburton are pleased to have been awarded Bronze at the 2022 Perth Airport Tourism Council Awards in the category of Excellence in Local Government for Tourism.

It is a fantastic achievement to be recognised for our tourism initiatives. In the past year we have revitalised and rebranded tourism opportunities in our local area and are harnessing the Ashburton Visitor Economy under a dedicated #VisitAshburton brand.

To view our tourism initiatives and learn more about the beauty of the Shire, follow @VisitAshburton on Instagram and Facebook.

This activity met Community Goal 1 of the Strategic Community Plan, Vibrant and Active Communities.



Explore Old Onslow with the Visit Ashburton App

This year, the Shire has worked to develop a 'Visit Ashburton' tourism application.

Featuring an interactive tour through the fascinating historic townsite of Old Onslow, the app utilises GPS technology to map out the original streets and buildings. Users will get a feel for what the original town was like, with the ability to re-create several Old Onslow buildings, learn about the sites, significant historical events such as cyclones that shaped the town, and even participate in a virtual storm.

Features include:

- Interactive Old Town Map
- Augmented Reality simulation of a cyclone
- Re-creation of Old Onslow buildings
- Old Onslow History and photos
- And more!

The Visit Ashburton app is now available to download on the Play Store and Apple Store.



This activity met Community Goal 1 of the Strategic Community Plan, Vibrant and Active Communities.



Get to know your SVA Rangers



The Shire of Ashburton's Ranger Services Team are based in Tom Price, Paraburdoo and Onslow.

Rangers are Municipal Law Enforcement Officers who are responsible for enforcing relevant legislation including:

- Dog Act 1976, Cat Act and associated local laws;
- Litter Act 1979;
- Control of Vehicles (Off Road Areas) Act 1978;
- Local Government Act 1995 (in relation to vehicle offences);
- Bush Fires Act 1954;
- Local Government (Miscellaneous Provisions) Act 1960; and
- Various Local Laws of the Shire of Ashburton

Kyle is a passionate outdoors person and spends most weekends out camping and exploring the Pilbara which has so much to offer for those who love nature and being in the outdoors. In 2022 Kyle has worked to develop a new emergency services Disaster Dashboard, a WA first. Western Sector Ranger Hamish is an avid member of the Onslow Community. Hamish has been a DFES volunteer for 14 years and currently holds the position of lieutenant at the Onslow Fire and Emergency Brigade. He is also a volunteer for St John WA and is currently an active member and committee member within the sub centre.

As Ranger of Western Sector, Hamish prides himself in turtle awareness project and Beach

Emergency Number projects. community projects such as the

Since joining the Paraburdoo community in early 2022, Paraburdoo Ranger Nick has found that the Ranger role to offer continuous learning with no two days being alike, a place to thrive and stay motivated while representing and being a part of a great community.

With a love for the countryside, exploring, four-wheel driving and chasing new challenges with his dog by his side, there isn't a more fitting role than a Ranger.

To learn more about Ranger Services in the Shire, visit the Shire of Ashburton website.

This activity meets Strategic Objective 1 of the Strategic Community Plan - People



Recognise your local volunteers with Volunteer of the Month

Do you know someone in our community who deserves to be recognised for their amazing volunteer efforts?

Thank them for their time and dedication by nominating them for Volunteer of the Month! The Volunteer of the Month program is proudly sponsored

by the Shire of Ashburton in conjunction with community partners Rio Tinto and the Chevron Wheatstone Project.

Visit the Shire of Ashburton website to complete a nomination form.

This activity meets Strategic Objective 1 of the Strategic Community Plan - People



The year that was – 2022

The Shire of Ashburton has been proud to deliver a range of events across all towns throughout 2022.

From Australia Day, International Women's Day, Harmony Day, Easter, Halloween, official openings and School Holiday programs to comedy nights, dodgeball, karaoke, live music, club support, quiz nights, welcome to town events and more – there has been something for everyone to enjoy!

In 2022 the Shire also celebrated our 50th anniversary with commemorative celebrations in all four towns.

Follow @ShireofAshburton on Facebook and Instagram to be the first to know about events as they continue to unfold across Pannawonica, Paraburdoo, Tom Price and Onslow in 2023.

This activity meets Strategic Objective 1 of the Strategic Community Plan - People





Onslow Aquatic Centre awarded *Gold Waterwise Status*

The Shire of Ashburton is proud to have been recognised as part of the WA Government's Waterwise Council Program for 2022.

Onslow Aquatic Centre was named a Gold Waterwise Aquatic Centre, awarded for demonstrating best practice water management in aquatic centres.

The Waterwise Council Program was introduced by Water Corporation and the Department of Water and Environmental Regulation more than 13 years ago. It is one of several targeted programs that promote efficiency among high water users and ensure all segments of the community are doing their bit to conserve precious water supplies.

To find out more about the Waterwise Council and Aquatic Centre Programs, visit watercorporation.com.au.



This activity meets Strategic Objective 1 and 2 of the Strategic Community Plan - People and Place



Shire boasts best pool in the *West!*

In March, the Shire of Ashburton was thrilled to see Vic Hayton Memorial Swimming Pool in Tom Price named one of the best public swimming pools in Australia.

The list, created by *The Guardian* highlighted some of the country's most outstanding public pools.

Vic Hayton represented not only the Pilbara Region, but the entire state as the only WA pool listed.

This activity meets Strategic Objectives 2 and 4 of the Strategic Community Plan - Place and Performance



Shire comes together to commemorate the ANZAC

On Monday 25 April, the Shire of Ashburton community came together across all towns to commemorate ANZAC Day 2022.

Residents in Onslow, Tom Price, Pannawonica and Paraburdoo each took part in a Dawn Service followed by a Gun Fire Breakfast, with Onslow residents also partaking in a March prior to the service.

The day provided an opportunity for the Ashburton community to come together and honour people who have served, and those who continue to serve in Australia's armed forces. Thank you to all those throughout the Shire who came together and embodied the spirit of the ANZAC to deliver this important event.



This activity meets Strategic Objective 1 and 2 of the Strategic Community Plan - People and Place



Shire receives Community Heritage Grant towards Old Onslow restoration



In April, the Shire of Ashburton were proud to receive a Community Heritage Grant to continue upgrades at the historic Old Onslow Townsite.

The \$20,000 grant will aid in the fabrication and installation of interpretive signage at the Old Onslow Townsite.

The Community Heritage Grants stream of the Heritage Grants Program promotes the telling of stories and intends to encourage the community's engagement with heritage places and is part of a State Government initiative to preserve and promote Western Australia's past.

The Shire of Ashburton is working to develop a number of upgrades to the site which includes clearer navigation, interpretive signage, and the development of an augmented reality app where users can travel back in time and explore Old Onslow.

Old Onslow provides another tourist drawcard to the Shire of Ashburton, which most notably includes a full reef to range experience from Mackerel Islands and coastal town of Onslow, through to Karijini National Park and the ancient Country surrounding Tom Price as well as featuring many astrotourism hotspots and geological wonders along the way.

To learn more about the history of Onslow, visit the Shire of Ashburton website or follow @VisitAshburton on Facebook and Instagram.

This activity meets Strategic Objective 2 and 3 of the Strategic Community Plan - Place and Prosperity



Countdown to the *Eclipse* begins

The countdown to the 2023 Total Solar Eclipse on April 20 has officially launched in Ashburton.

The Shire of Ashburton has been working with Astrotourism WA's Carol Redford, and Dr Kate Russo - Author, Psychologist, Eclipse chaser, Founder of Being in the Shadow, to implement a series of activities that will position Onslow and the Shire of Ashburton as a location to view the eclipse next year and to identify a longer-term strategy for such future events.

Redford visited Ashburton in April, hosting stargazing, community information and business consultation events in Tom Price, Onslow, and Cheela Plains.

The Shire of Ashburton lies just outside the path of totality for the 2023 solar eclipse, with the coastal areas around Onslow experiencing a deep partial eclipse of over 99% of the Sun covered.

Mark your calendar for April 15-22 as the Shire of Ashburton prepares to celebrate the 2023 Solar Eclipse in Onslow.

Stay tuned to Shire platforms for more information in 2023.

This activity meets Strategic Objectives 1 and 3 of the Strategic Community Plan - People and Prosperity



Booking made easy with SpacetoCo

In February, the SpacetoCo booking system launched in Tom Price, Paraburdoo and Onslow.

The Shire of Ashburton Facilities team worked with Perth-based company, SpacetoCo, to ensure effective delivery and booking of all eligible Shire facilities.

From providing a safe and reliable payment system or fast and friendly help, the utilisation of SpacetoCo will ensure the Shire of Ashburton is able to give both regular space hirers and casual bookings a great user experience.

To book a space in each respective town, visit:

Tom Price: <https://www.spacetoco.com/host/tom-price>

Paraburdoo: <https://www.spacetoco.com/host/paraburdoo>

Onslow: <https://www.spacetoco.com/host/onslow>

For more information regarding the SpacetoCo platform, visit <https://www.spacetoco.com/>

For any questions regarding the hiring of Shire spaces, please contact Shire of Ashburton Facilities via 9188 5444.



This activity meets Strategic Objectives 1 and 3 of the Strategic Community Plan - People and Prosperity



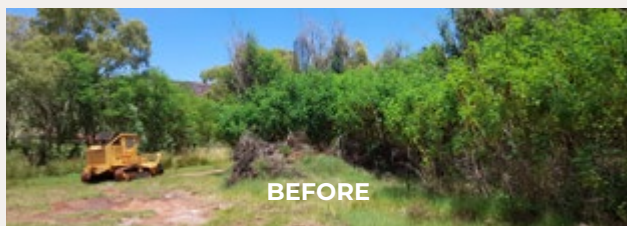
Tom Price Leucaena Tree removal *success*

In March, the Shire of Ashburton successfully removed Leucaena trees on Doradeen Road in Tom Price after a trial removal took place in August 2021.

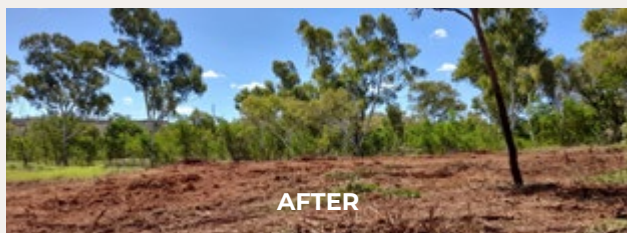
The decision was carried by Council during the August 2021 Ordinary Meeting to test the long-term effectiveness of using a forestry mulcher to eradicate local Leucaena infestations, which proved successful.

The Shire then contracted locally owned business Pilbara Trees to conduct the removal of Leucaena trees on Doradeen Road.

In addition to the continual removal of the trees, the Shire of Ashburton is consulting with Government Departments, industry, local organisations, and community groups to investigate potential options to control the spread of Leucaena trees. This will help to maintain flourishing natural environments and to conserve the region's high biodiversity and landscape values.



BEFORE



AFTER

This activity meets Strategic Objective 2 of the Strategic Community Plan - Place



Legislative changes continue for Dog Amendment (Stop Puppy Farming) Act 2021

Residents are advised to keep an eye out for key changes as they come into place across the year.

In December 2021, changes to the Dog Act 1976 passed through Parliament, giving local governments the tools to deal with irresponsible dog breeders and encourage responsible dog ownership through public awareness.

When the changes were passed, muzzling requirements for pets or retired racing greyhounds in public places were removed. Greyhounds are still required to be kept on a lead in public areas and registered racing greyhounds continue to be required to wear muzzles in all public places.

The commencement of the other provisions will require the development of regulations and the development of a centralised registration system, in consultation with stakeholders.

The Shire will be updating residents as information is provided by the Department of Local Government, Sport and Cultural Industries across the year via our social channels. Community members are advised to follow the Shire of Ashburton on Facebook @ShireofAshburton and visit our website to keep up to date with changes that may affect them.

For more information on the Dog Amendment (Stop Puppy Farming) Act 2021 can be found via the Department of Local Government, Sport and Cultural Industries website.

This activity meets Strategic Objective 1 of the Strategic Community Plan - People



Paraburdoo Dog Park rectification works completed

In March, fencing rectification works at Paraburdoo Dog Park were officially completed.

The fence is now completely secure, allowing for both dogs and owners to use the park safely!

This activity meets Strategic Objective 1 and 2 of the Strategic Community Plan - People and Place



Turtle safety

at forefront of Onslow beach sign project

In February, Shire of Ashburton Ranger Services and Onslow Maintenance Team in collaboration with the Chevron Sea Rangers installed informational and directional signs along Back Beach in Onslow to educate beach users of driving permissions.

This initiative was completed after several turtle nests were destroyed by vehicles driven above the high tide mark, alerting the need for education and direction. Community members and tourists who use the beach are asked to drive on the hard sand as close to the water's edge as possible. This will eliminate the risk of driving over turtle nests or leaving tyre tracks which can confuse hatchlings.

The directional signs clearly indicate to all beachgoers where they are able to drive. If the tide is high and there is no hard sand to drive on, travellers are advised to refrain from driving and instead walk along the beach.

Signs were also installed at the Onslow Salt Jetty and the Front Beach Groyne reminding the community that driving between these two points in any vehicle is forbidden at all times of the year.



This activity meets Strategic Objective 1 and 2 of the Strategic Community Plan - People and Place



Keeping up with the Onslow Keepers

Onslow Keepers is a program for residents and visitors aged 55 and over to participate in monthly catch ups.

The program provides an opportunity for residents to come together, take part in activities, meet friends old and new and enjoy each other's company.

Residents are able to take part in a range of events that include sundowners, craft activities, Karratha bus trips, chair yoga, an annual Christmas lunch, and more.

Events regularly occur and new participants are always welcome. Onslow Keepers is supported by the

Shire of Ashburton and the Chevron-operated Wheatstone Project.

For more information, contact the Onslow Community Development team by calling 9181 3303 or email OnslowEventsandActivities@ashburton.wa.gov.au

This activity meets Strategic Objective 1 of the Strategic Community Plan - People





Business and economic development update

This year, the Shire has been prominent in the area of business and economic development and tourism.

In June, we presented at the WA State Tourism Conference in Perth on Dark Sky Tourism and the 2023 Solar Eclipse. The presentation focused on how the Shire is preparing the harness the tourism and opportunities for local business that will arise as a result of the Solar Eclipse.

Representatives from the Shire also attended the Pilbara Summit Conference in Karratha. With over 580 delegates in attendance, the event highlighted the strength of the Pilbara region and its role in keeping Australia moving as we continue to navigate the effects of COVID-19 across the country.

As our tourism presence continues to grow on the back of the upcoming Solar Eclipse and the 2022 tourism season, The Shire has also been working with The 4WD Adventure Show on Channel 7 to showcase our towns and tourism opportunities across several episodes.

With presenters including Ronny Dahl and the 4Wheeling Australia team, former West Coast Eagles

player Mark Lecras and reality TV alumni Locky Gilbert, the show provides a great opportunity to reach avid adventurers across a range of target audiences.

All episodes of season one can be viewed on 7Plus.

Remember to tag @VisitAshburton when sharing your photos of Ashburton for the chance to be featured on our tourism channels.

This activity meets Strategic Objectives 3 and 4 of the Strategic Community Plan - Prosperity and Performance



Tom Price Pump Track project *officially opened*



The Shire of Ashburton officially opened the Tom Price Pump Track at an event attended by stakeholders and community members in November.

The pump track was unveiled as part of a revitalisation of the area at the existing Lions Park.

As part of an overall \$1.6M Bike Park Project, the pump track was designed by Common Ground Trails in consultation with community and Council's vision for the facility.

Shire of Ashburton President Kerry White acknowledged that ensuring liveability and opportunities for an active community form part of Council's vision and our strategic community plan.

"Already the Tom Price Pump Track has become one of the most popular community amenities in town and I hope that this pump track continues to deliver to our community for many years to come," said Councillor White.

"Council recognises the need to improve, upgrade and develop modern and fit for purpose community amenities and to provide our community with facilities that encourage vibrancy and connection within each of our towns.

"I would like to thank Rio Tinto for their funding contribution towards this facility and also the learn to ride track within Lion's Park, which was part of an overall upgrade to this area as well as the upgrade to the dog park, that has helped transform and revitalise this area of town.

"The Bike Park is a great addition to Tom Price, allowing children of all ages and abilities to make use of the facility that is both safe and fun.

"I would also like to acknowledge Deputy Shire President Matthew Lynch for his generous contribution of a bike repair station which has also been installed at the pump track.



"Matt is an avid mountain biking enthusiast and key driver of the project in Tom Price."

The pump track and learn-to-ride track has already proved to be incredibly popular with locals.

This activity meets Strategic Objective 1 and 2 of the Strategic Community Plan - People and Place





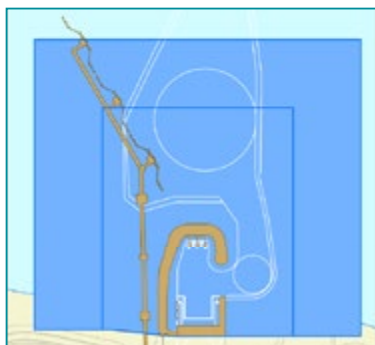
Onslow
Eclipse 2023
 Festival of Events



SAVE THE DATE
15-22 APRIL 2023

Visit **Ashburton**
reef to range

shire of Ashburton
 opportunity to community

WATER-SIDE RESTRICTED ZONES Port of Ashburton



 Berth
 Boating safety exclusion zone

SAFETY NOTICE TO ALL BOAT USERS

With large ships entering and leaving port waters, it's up to you as a responsible recreational craft skipper to ensure you and your passengers remain safe.

You **MUST** stay well clear of the shipping channel and large ships, and only cross the channel when safe to do so.

Remember, you're the skipper, and you're responsible.

**STAY
 WELL
 CLEAR**

FOR MORE INFORMATION

(08) 9159 6556 | dampier.vts@pilbaraports.com.au
www.pilbaraports.com.au

 **PILBARA PORTS
 AUTHORITY**

Upcoming Events



Administration Centre

Poinciana Street, Tom Price WA 6751
PO Box 567

Phone: (08) 9188 4444
Freecall: 1800 679 232
Email: soa@ashburton.wa.gov.au

www.ashburton.wa.gov.au

shire of Ashburton
opportunity to community

Inside Ashburton Publication is produced by the Shire of Ashburton.

Editor: Alison Lennon and Taysha Sullivan

Editorial contributors: Shire of Ashburton Staff

Photo contributors: Shire of Ashburton

Template Design: Advance Press

Issue Design & Printing: Advance Press

If you have a story for the next "Inside Ashburton" contact media@ashburton.wa.gov.au

Follow us @shireofashburton @visitashburton

DISCLAIMER: This newsletter is for general information purposes only. The views expressed in this newsletter are not necessarily those of the Shire of Ashburton. The Shire has taken all measures to ensure the contents in this publication is correct, however it accepts no responsibility for the accuracy or the completeness of the material. Readers are advised not to rely solely on this information when making any decision. The Shire of Ashburton reserves the right to change the publication as it sees fit. The Shire of Ashburton disclaims any responsibility or duty of care towards any person for loss or damage suffered as a result of this newsletter.

COPYRIGHT: The contents of this newsletter are subject to copyright under the laws of Australia. The copyright in materials in this newsletter as a whole is owned by the Shire of Ashburton. Third parties may own the copyright in some materials incorporated into this newsletter. In reference to the Copyright Act 1968, please feel free to reproduce parts of this newsletter for personal, educational or any other non-commercial purposes, provided that the Shire is aware of this.